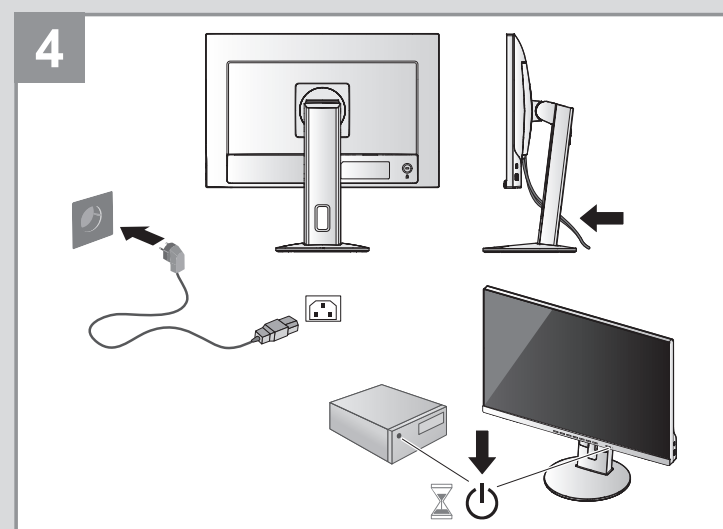
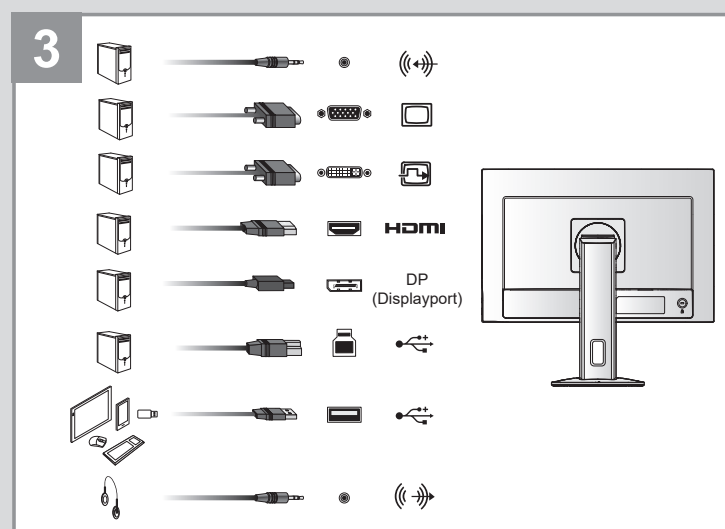
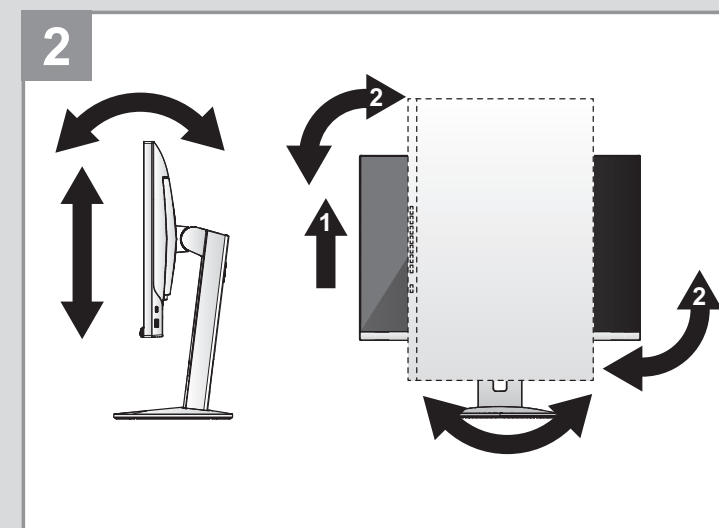
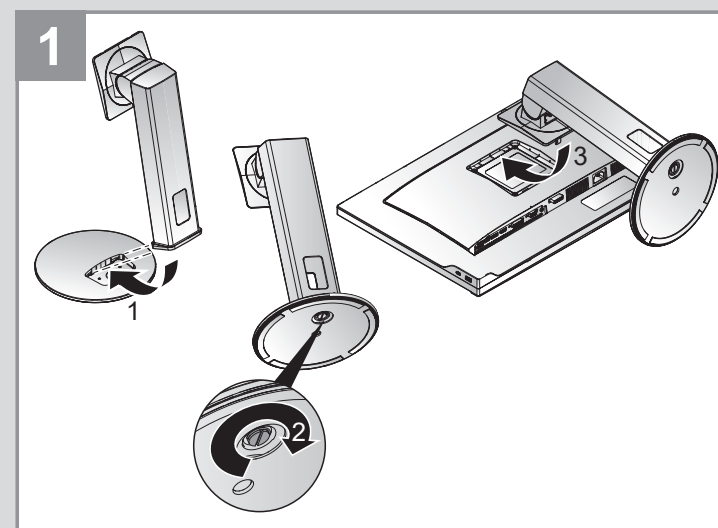
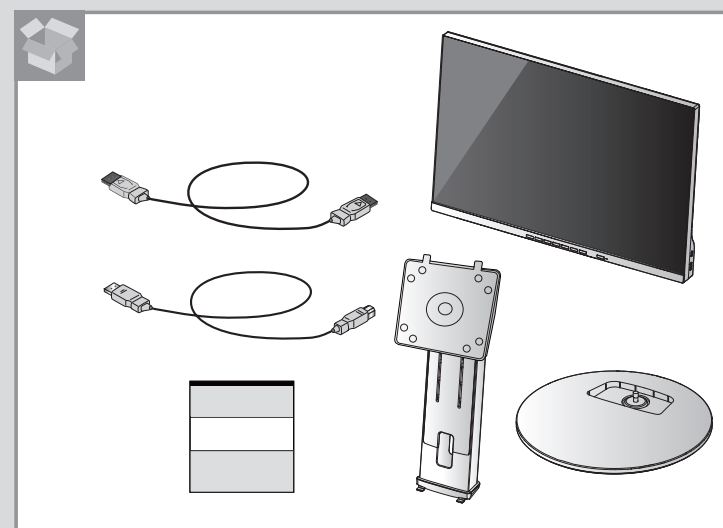
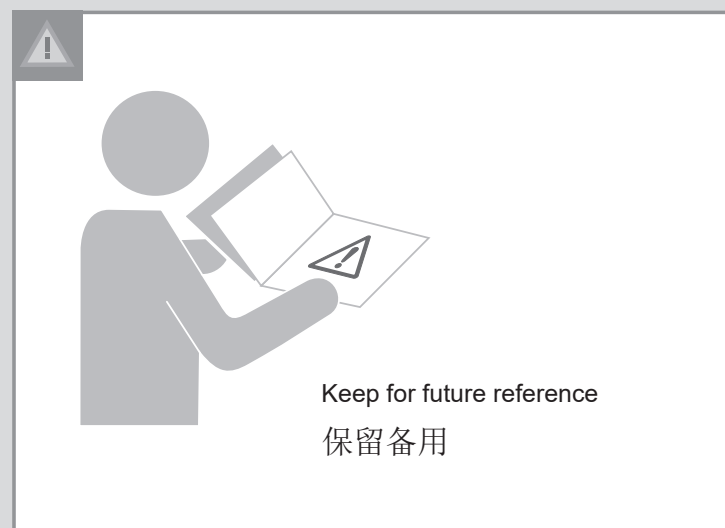


Quick Start Guide



HDMI
HIGH-DEFINITION MULTIMEDIA INTERFACE

The terms HDMI, HDMI High-Definition Multimedia Interface, HDMI Trade dress and the HDMI Logos are trademarks or registered trademarks of HDMI Licensing Administrator, Inc.

The drivers and files for this monitor can be downloaded from
https://pcsupport.lenovo.com/solutions/c24d_20 or scan QR code



EPREL registration number: 1885553

Part Number: SP40W82040

Printed in China

(1P) P/N:



SP40W82040



P/N: 746.0BW01.0001

Safety information



DANGER

To avoid shock hazard:

- Do not remove the covers.
- Do not operate this product unless the stand is attached.
- Do not connect or disconnect this product during an electrical storm.
- The power cord plug must be connected to a properly wired and grounded power outlet.
- Any equipment to which this product will be attached must also be connected to properly wired and grounded power outlets.
- To isolate the monitor from the electrical supply, you must remove the plug from the power outlet. The power outlet should be easily accessible.

Handling:

- If your monitor weighs more than 18 kg (39.68 lb), it is recommended that it be moved or lifted by two people.

Lenovo Limited Warranty - Customer Notice

Please read the Lenovo Limited Warranty (LLW) which is available in 12 languages. You can visit <http://www.lenovo.com/warranty> to read it. If you cannot access the LLW this way, contact your local Lenovo office or dealer to obtain a printed version.

Warranty Information applicable to your Machine:

1. Warranty Period: 3 years
2. Type of Warranty Service: Customer Replaceable Unit ("CRU") and Customer Carry-In or Mail-In Service
3. Lenovo Limited Warranty Version: L505-0010-02 08/2011

For warranty service consult the telephone list at www.lenovo.com/support/ phone. Phone numbers are subject to change without notice.