

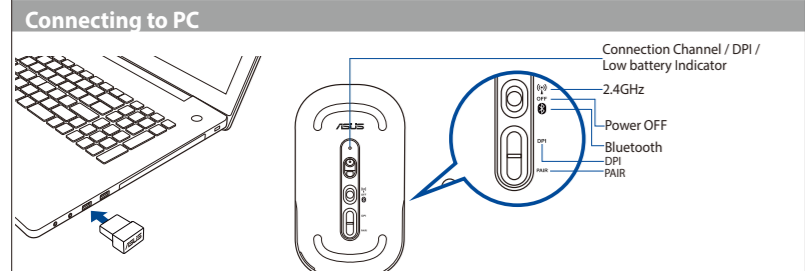


ASUS MD100 Mouse
Mouse Model Name: MD100 / 滑鼠型號: MD100 / Nome modello mouse: MD100 / Modèle de la souris: MD100 / Модель мыши: MD100 / 마우스 모델 이름: MD100 / Nombre del modelo de ratón: MD100 / Nome de modelo do rato: MD100 / Denumire model mouse: MD100 / ചെറിയപ്പേര്: MD100 / Nama Model Mouse: MD100 / Назва моделі миші: MD100 / מודל העכבר: MD100 / Nama model tetikus: MD100 / Nama model penyesuaian: MD100 / Název modelu myši: MD100 / Název modelu myši: MD100 / Egér típusnév: MD100 / Modellname der Maus: MD100
Dongle Model Name: RG56 / 接收器型號: RG56 / Nome modello dongle: RG56 / Modèle du dongle: RG56 / Модель приемника: RG56 / Dongle 모델 이름: RG56 / Nombre del modelo de la llave: RG56 / Nome de modelo do adaptador: RG56 / Denumire model dongle: RG56 / ചെറിയപ്പേര്: RG56 / Nama Model Mouse: RG56 / Назва моделі ключа: RG56 / מודל המכשיר: RG56 / Název modelu adaptéru dongle: RG56 / Nazwa modelu klucza sprzawczego: RG56 / Název modelu pamätového kľúča: RG56 / Dongle típusnév: RG56 / Modellname des Dongles: RG56

ENGLISH
Your package includes:
a. MD100 Mouse
b. Nano USB 2.4GHz receiver (stored inside the mouse)
c. 1 x AA battery
d. Quick Start Guide
e. Warranty Card
Dimensions
Mouse: 107mm (L) x 60mm (W) x 27.8mm(H)
Dongle: 18.9mm (L) x 12mm (W) x 4.5mm (H)
Strap: 70mm (L) x 11mm (W) x 0.7mm (H)
Weight
Mouse: 56g (without battery)
Dongle: 1.6g
Rating
Mouse: 2.4GHz mode: 1.5V/50mA
Bluetooth 5.0 mode: 1.5V/50mA
Dongle: 5V/100mA
Hardware Version
Mouse: GFSK / Bluetooth: V1.0
Dongle: GFSK: V1.0
Software Version
Mouse: GFSK / Bluetooth: V1.0
Dongle: GFSK: V1.0

ENGLISH
System Requirements
Win 10 / 11 / macOS 10.14.6 / Chrome OS
UKCA RF Output table (The Radio Equipment Regulations 2017)
Frequency Band
Mouse: 2.4GHz mode: 2403-2479 MHz
Bluetooth mode: 2402-2480 MHz
Wireless Receiver: 2403-2479 MHz
Maximum output power(EIRP)
Mouse: 2.4GHz mode: 4 dbm
Bluetooth mode: 0 dbm
Wireless Receiver: 0 dbm
CE RED RF Output table (Directive 2014/53/EU)
Frequency Band
Mouse: 2.4GHz mode: 2403-2479 MHz
Bluetooth mode: 2402-2480 MHz
Wireless Receiver: 2403-2479 MHz
Maximum output power(EIRP)
Mouse: 2.4GHz mode: 4 dbm
Bluetooth mode: 0 dbm
Wireless Receiver: 0 dbm

ENGLISH
Your package includes:
a. MD100 Mouse
b. Nano USB 2.4GHz receiver (stored inside the mouse)
c. 1 x AA battery
d. Quick Start Guide
e. Warranty Card
Dimensions
Mouse: 107mm (L) x 60mm (W) x 27.8mm(H)
Dongle: 18.9mm (L) x 12mm (W) x 4.5mm (H)
Strap: 70mm (L) x 11mm (W) x 0.7mm (H)
Weight
Mouse: 56g (without battery)
Dongle: 1.6g
Rating
Mouse: 2.4GHz mode: 1.5V/50mA
Bluetooth 5.0 mode: 1.5V/50mA
Dongle: 5V/100mA
Hardware Version
Mouse: GFSK / Bluetooth: V1.0
Dongle: GFSK: V1.0
Software Version
Mouse: GFSK / Bluetooth: V1.0
Dongle: GFSK: V1.0



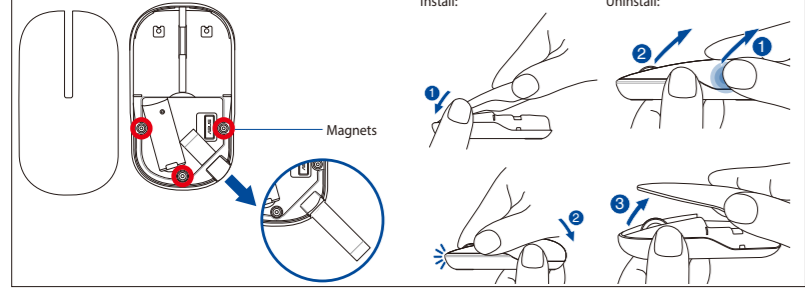
- Via 2.4GHz:
1. Slide the power switch to Bluetooth Mode.
2. Insert the Nano USB receiver into an available USB port on your PC.
3. On Windows, right-click the Bluetooth icon on the right of the task bar (or double-click the Bluetooth icon in the Control Panel), then click Add a device > ASUS MD100 Mouse > Finish.
4. When successfully paired to your PC, the Connection channel indicator will light up green and then turn off.

- Via Bluetooth:
1. Slide the switch to Bluetooth Mode.
2. Press the pair button for over 3 seconds to activate the Bluetooth pairing mode. (The indicator will flash blue rapidly)
3. On Windows, right-click the Bluetooth icon on the right of the task bar (or double-click the Bluetooth icon in the Control Panel), then click Add a device > ASUS MD100 Mouse > Finish.
4. When successfully connected, the indicator will stop flashing and remain in blue light for several seconds before it fade off. Once the mouse is set up on your PC, it will automatically connect to your PC the next time you turn to Bluetooth mode.

Adjusting DPI
To change the DPI, press the DPI switch button. Refer to the following for DPI indications:
800 dpi: DPI indicator will flash once.
1000 dpi: DPI indicator will flash twice.
1600 dpi: DPI indicator will flash three times.

Low battery indicator
Please replace the battery when the indicator flashes red, indicating that the mouse is running low on power. (with less than20%)
CAUTION: RISK OF EXPLOSION IF BATTERY IS REPLACED BY AN INCORRECT TYPE. DISPOSE OF USED BATTERIES ACCORDING TO THE INSTRUCTIONS.

Miscellaneous
To use the carry webbing, open the top cover and pull out the webbing. To store it back, insert the webbing into the belt hole, and then clap the top cover gently. To change the battery, lift the top cover and replace with a new AA battery, then slide the cover back on top of the mouse. Make sure that the 3 screws on the top cover lies directly on top of the magnets on the mouse.



- Connecting to PC
Via 2.4GHz:
1. Slide the power switch to 2.4GHz Mode.
2. Insert the Nano USB receiver into an available USB port on your PC.
3. On Windows, right-click the Bluetooth icon on the right of the task bar (or double-click the Bluetooth icon in the Control Panel), then click Add a device > ASUS MD100 Mouse > Finish.
4. When successfully connected, the indicator will stop flashing and remain in blue light for several seconds before it fade off. Once the mouse is set up on your PC, it will automatically connect to your PC the next time you turn to Bluetooth mode.
NOTE: The mouse supports Bluetooth 5.0.

Adjusting DPI
To change the DPI, press the DPI switch button. Refer to the following for DPI indications:
800 dpi: DPI indicator will flash once.
1000 dpi: DPI indicator will flash twice.
1600 dpi: DPI indicator will flash three times.

Low battery indicator
Please replace the battery when the indicator flashes red, indicating that the mouse is running low on power. (with less than20%)
CAUTION: RISK OF EXPLOSION IF BATTERY IS REPLACED BY AN INCORRECT TYPE. DISPOSE OF USED BATTERIES ACCORDING TO THE INSTRUCTIONS.

Miscellaneous
To use the carry webbing, open the top cover and pull out the webbing. To store it back, insert the webbing into the belt hole, and then clap the top cover gently. To change the battery, lift the top cover and replace with a new AA battery, then slide the cover back on top of the mouse. Make sure that the 3 screws on the top cover lies directly on top of the magnets on the mouse.

ENGLISH
Your package includes:
a. MD100 Mouse
b. Nano USB 2.4GHz receiver (stored inside the mouse)
c. 1 x AA battery
d. Quick Start Guide
e. Warranty Card
Dimensions
Mouse: 107mm (L) x 60mm (W) x 27.8mm(H)
Dongle: 18.9mm (L) x 12mm (W) x 4.5mm (H)
Strap: 70mm (L) x 11mm (W) x 0.7mm (H)
Weight
Mouse: 56g (without battery)
Dongle: 1.6g
Rating
Mouse: 2.4GHz mode: 1.5V/50mA
Bluetooth 5.0 mode: 1.5V/50mA
Dongle: 5V/100mA
Hardware Version
Mouse: GFSK / Bluetooth: V1.0
Dongle: GFSK: V1.0
Software Version
Mouse: GFSK / Bluetooth: V1.0
Dongle: GFSK: V1.0

- Connecting to PC
Via 2.4GHz:
1. Slide the power switch to 2.4GHz Mode.
2. Insert the Nano USB receiver into an available USB port on your PC.
3. On Windows, right-click the Bluetooth icon on the right of the task bar (or double-click the Bluetooth icon in the Control Panel), then click Add a device > ASUS MD100 Mouse > Finish.
4. When successfully paired to your PC, the Connection channel indicator will light up green and then turn off.

- Connecting to PC
Via Bluetooth:
1. Slide the switch to Bluetooth Mode.
2. Press the pair button for over 3 seconds to activate the Bluetooth pairing mode. (The indicator will flash blue rapidly)
3. On Windows, right-click the Bluetooth icon on the right of the task bar (or double-click the Bluetooth icon in the Control Panel), then click Add a device > ASUS MD100 Mouse > Finish.
4. When successfully connected, the indicator will stop flashing and remain in blue light for several seconds before it fade off. Once the mouse is set up on your PC, it will automatically connect to your PC the next time you turn to Bluetooth mode.
NOTE: The mouse supports Bluetooth 5.0.

Adjusting DPI
To change the DPI, press the DPI switch button. Refer to the following for DPI indications:
800 dpi: DPI indicator will flash once.
1000 dpi: DPI indicator will flash twice.
1600 dpi: DPI indicator will flash three times.

Low battery indicator
Please replace the battery when the indicator flashes red, indicating that the mouse is running low on power. (with less than20%)
CAUTION: RISK OF EXPLOSION IF BATTERY IS REPLACED BY AN INCORRECT TYPE. DISPOSE OF USED BATTERIES ACCORDING TO THE INSTRUCTIONS.

Miscellaneous
To use the carry webbing, open the top cover and pull out the webbing. To store it back, insert the webbing into the belt hole, and then clap the top cover gently. To change the battery, lift the top cover and replace with a new AA battery, then slide the cover back on top of the mouse. Make sure that the 3 screws on the top cover lies directly on top of the magnets on the mouse.

ENGLISH
Your package includes:
a. MD100 Mouse
b. Nano USB 2.4GHz receiver (stored inside the mouse)
c. 1 x AA battery
d. Quick Start Guide
e. Warranty Card
Dimensions
Mouse: 107mm (L) x 60mm (W) x 27.8mm(H)
Dongle: 18.9mm (L) x 12mm (W) x 4.5mm (H)
Strap: 70mm (L) x 11mm (W) x 0.7mm (H)
Weight
Mouse: 56g (without battery)
Dongle: 1.6g
Rating
Mouse: 2.4GHz mode: 1.5V/50mA
Bluetooth 5.0 mode: 1.5V/50mA
Dongle: 5V/100mA
Hardware Version
Mouse: GFSK / Bluetooth: V1.0
Dongle: GFSK: V1.0
Software Version
Mouse: GFSK / Bluetooth: V1.0
Dongle: GFSK: V1.0

- Connecting to PC
Via 2.4GHz:
1. Slide the power switch to 2.4GHz Mode.
2. Insert the Nano USB receiver into an available USB port on your PC.
3. On Windows, right-click the Bluetooth icon on the right of the task bar (or double-click the Bluetooth icon in the Control Panel), then click Add a device > ASUS MD100 Mouse > Finish.
4. When successfully paired to your PC, the Connection channel indicator will light up green and then turn off.

- Connecting to PC
Via Bluetooth:
1. Slide the switch to Bluetooth Mode.
2. Press the pair button for over 3 seconds to activate the Bluetooth pairing mode. (The indicator will flash blue rapidly)
3. On Windows, right-click the Bluetooth icon on the right of the task bar (or double-click the Bluetooth icon in the Control Panel), then click Add a device > ASUS MD100 Mouse > Finish.
4. When successfully connected, the indicator will stop flashing and remain in blue light for several seconds before it fade off. Once the mouse is set up on your PC, it will automatically connect to your PC the next time you turn to Bluetooth mode.
NOTE: The mouse supports Bluetooth 5.0.

Adjusting DPI
To change the DPI, press the DPI switch button. Refer to the following for DPI indications:
800 dpi: DPI indicator will flash once.
1000 dpi: DPI indicator will flash twice.
1600 dpi: DPI indicator will flash three times.

Low battery indicator
Please replace the battery when the indicator flashes red, indicating that the mouse is running low on power. (with less than20%)
CAUTION: RISK OF EXPLOSION IF BATTERY IS REPLACED BY AN INCORRECT TYPE. DISPOSE OF USED BATTERIES ACCORDING TO THE INSTRUCTIONS.

Miscellaneous
To use the carry webbing, open the top cover and pull out the webbing. To store it back, insert the webbing into the belt hole, and then clap the top cover gently. To change the battery, lift the top cover and replace with a new AA battery, then slide the cover back on top of the mouse. Make sure that the 3 screws on the top cover lies directly on top of the magnets on the mouse.

ENGLISH
Your package includes:
a. MD100 Mouse
b. Nano USB 2.4GHz receiver (stored inside the mouse)
c. 1 x AA battery
d. Quick Start Guide
e. Warranty Card
Dimensions
Mouse: 107mm (L) x 60mm (W) x 27.8mm(H)
Dongle: 18.9mm (L) x 12mm (W) x 4.5mm (H)
Strap: 70mm (L) x 11mm (W) x 0.7mm (H)
Weight
Mouse: 56g (without battery)
Dongle: 1.6g
Rating
Mouse: 2.4GHz mode: 1.5V/50mA
Bluetooth 5.0 mode: 1.5V/50mA
Dongle: 5V/100mA
Hardware Version
Mouse: GFSK / Bluetooth: V1.0
Dongle: GFSK: V1.0
Software Version
Mouse: GFSK / Bluetooth: V1.0
Dongle: GFSK: V1.0

- Connecting to PC
Via 2.4GHz:
1. Slide the power switch to 2.4GHz Mode.
2. Insert the Nano USB receiver into an available USB port on your PC.
3. On Windows, right-click the Bluetooth icon on the right of the task bar (or double-click the Bluetooth icon in the Control Panel), then click Add a device > ASUS MD100 Mouse > Finish.
4. When successfully paired to your PC, the Connection channel indicator will light up green and then turn off.

- Connecting to PC
Via Bluetooth:
1. Slide the switch to Bluetooth Mode.
2. Press the pair button for over 3 seconds to activate the Bluetooth pairing mode. (The indicator will flash blue rapidly)
3. On Windows, right-click the Bluetooth icon on the right of the task bar (or double-click the Bluetooth icon in the Control Panel), then click Add a device > ASUS MD100 Mouse > Finish.
4. When successfully connected, the indicator will stop flashing and remain in blue light for several seconds before it fade off. Once the mouse is set up on your PC, it will automatically connect to your PC the next time you turn to Bluetooth mode.
NOTE: The mouse supports Bluetooth 5.0.

Adjusting DPI
To change the DPI, press the DPI switch button. Refer to the following for DPI indications:
800 dpi: DPI indicator will flash once.
1000 dpi: DPI indicator will flash twice.
1600 dpi: DPI indicator will flash three times.

Low battery indicator
Please replace the battery when the indicator flashes red, indicating that the mouse is running low on power. (with less than20%)
CAUTION: RISK OF EXPLOSION IF BATTERY IS REPLACED BY AN INCORRECT TYPE. DISPOSE OF USED BATTERIES ACCORDING TO THE INSTRUCTIONS.

Miscellaneous
To use the carry webbing, open the top cover and pull out the webbing. To store it back, insert the webbing into the belt hole, and then clap the top cover gently. To change the battery, lift the top cover and replace with a new AA battery, then slide the cover back on top of the mouse. Make sure that the 3 screws on the top cover lies directly on top of the magnets on the mouse.

ENGLISH
Your package includes:
a. MD100 Mouse
b. Nano USB 2.4GHz receiver (stored inside the mouse)
c. 1 x AA battery
d. Quick Start Guide
e. Warranty Card
Dimensions
Mouse: 107mm (L) x 60mm (W) x 27.8mm(H)
Dongle: 18.9mm (L) x 12mm (W) x 4.5mm (H)
Strap: 70mm (L) x 11mm (W) x 0.7mm (H)
Weight
Mouse: 56g (without battery)
Dongle: 1.6g
Rating
Mouse: 2.4GHz mode: 1.5V/50mA
Bluetooth 5.0 mode: 1.5V/50mA
Dongle: 5V/100mA
Hardware Version
Mouse: GFSK / Bluetooth: V1.0
Dongle: GFSK: V1.0
Software Version
Mouse: GFSK / Bluetooth: V1.0
Dongle: GFSK: V1.0

- Connecting to PC
Via 2.4GHz:
1. Slide the power switch to 2.4GHz Mode.
2. Insert the Nano USB receiver into an available USB port on your PC.
3. On Windows, right-click the Bluetooth icon on the right of the task bar (or double-click the Bluetooth icon in the Control Panel), then click Add a device > ASUS MD100 Mouse > Finish.
4. When successfully paired to your PC, the Connection channel indicator will light up green and then turn off.

- Connecting to PC
Via Bluetooth:
1. Slide the switch to Bluetooth Mode.
2. Press the pair button for over 3 seconds to activate the Bluetooth pairing mode. (The indicator will flash blue rapidly)
3. On Windows, right-click the Bluetooth icon on the right of the task bar (or double-click the Bluetooth icon in the Control Panel), then click Add a device > ASUS MD100 Mouse > Finish.
4. When successfully connected, the indicator will stop flashing and remain in blue light for several seconds before it fade off. Once the mouse is set up on your PC, it will automatically connect to your PC the next time you turn to Bluetooth mode.
NOTE: The mouse supports Bluetooth 5.0.

Adjusting DPI
To change the DPI, press the DPI switch button. Refer to the following for DPI indications:
800 dpi: DPI indicator will flash once.
1000 dpi: DPI indicator will flash twice.
1600 dpi: DPI indicator will flash three times.

Low battery indicator
Please replace the battery when the indicator flashes red, indicating that the mouse is running low on power. (with less than20%)
CAUTION: RISK OF EXPLOSION IF BATTERY IS REPLACED BY AN INCORRECT TYPE. DISPOSE OF USED BATTERIES ACCORDING TO THE INSTRUCTIONS.

Miscellaneous
To use the carry webbing, open the top cover and pull out the webbing. To store it back, insert the webbing into the belt hole, and then clap the top cover gently. To change the battery, lift the top cover and replace with a new AA battery, then slide the cover back on top of the mouse. Make sure that the 3 screws on the top cover lies directly on top of the magnets on the mouse.

ENGLISH
Your package includes:
a. MD100 Mouse
b. Nano USB 2.4GHz receiver (stored inside the mouse)
c. 1 x AA battery
d. Quick Start Guide
e. Warranty Card
Dimensions
Mouse: 107mm (L) x 60mm (W) x 27.8mm(H)
Dongle: 18.9mm (L) x 12mm (W) x 4.5mm (H)
Strap: 70mm (L) x 11mm (W) x 0.7mm (H)
Weight
Mouse: 56g (without battery)
Dongle: 1.6g
Rating
Mouse: 2.4GHz mode: 1.5V/50mA
Bluetooth 5.0 mode: 1.5V/50mA
Dongle: 5V/100mA
Hardware Version
Mouse: GFSK / Bluetooth: V1.0
Dongle: GFSK: V1.0
Software Version
Mouse: GFSK / Bluetooth: V1.0
Dongle: GFSK: V1.0

- Connecting to PC
Via 2.4GHz:
1. Slide the power switch to 2.4GHz Mode.
2. Insert the Nano USB receiver into an available USB port on your PC.
3. On Windows, right-click the Bluetooth icon on the right of the task bar (or double-click the Bluetooth icon in the Control Panel), then click Add a device > ASUS MD100 Mouse > Finish.
4. When successfully paired to your PC, the Connection channel indicator will light up green and then turn off.

- Connecting to PC
Via Bluetooth:
1. Slide the switch to Bluetooth Mode.
2. Press the pair button for over 3 seconds to activate the Bluetooth pairing mode. (The indicator will flash blue rapidly)
3. On Windows, right-click the Bluetooth icon on the right of the task bar (or double-click the Bluetooth icon in the Control Panel), then click Add a device > ASUS MD100 Mouse > Finish.
4. When successfully connected, the indicator will stop flashing and remain in blue light for several seconds before it fade off. Once the mouse is set up on your PC, it will automatically connect to your PC the next time you turn to Bluetooth mode.
NOTE: The mouse supports Bluetooth 5.0.

Adjusting DPI
To change the DPI, press the DPI switch button. Refer to the following for DPI indications:
800 dpi: DPI indicator will flash once.
1000 dpi: DPI indicator will flash twice.
1600 dpi: DPI indicator will flash three times.

Low battery indicator
Please replace the battery when the indicator flashes red, indicating that the mouse is running low on power. (with less than20%)
CAUTION: RISK OF EXPLOSION IF BATTERY IS REPLACED BY AN INCORRECT TYPE. DISPOSE OF USED BATTERIES ACCORDING TO THE INSTRUCTIONS.

Miscellaneous
To use the carry webbing, open the top cover and pull out the webbing. To store it back, insert the webbing into the belt hole, and then clap the top cover gently. To change the battery, lift the top cover and replace with a new AA battery, then slide the cover back on top of the mouse. Make sure that the 3 screws on the top cover lies directly on top of the magnets on the mouse.



ASUS MD100 Mouse

Mouse Model Name: MD100 / 清基型號: MD100 / Nome modello mouse: MD100 / Modèle de la souris: MD100 / Модель мыши: MD100 / 마우스 모델 이름: MD100 / Nombre del modelo de ratón: MD100 / Nome de modelo do rato: MD100 / Denumire model mouse: MD100 / ඔබගේ මායිමෙහි නම: MD100 / Nama Model Mouse: MD100 / Назва модели мыши: MD100 / שם דגם העכבר: MD100 / Nama model tetikus: MD100 / Nama model pengesuai: MD100 / Název modelu myši: MD100 / Název modelu myši: MD100 / Egér típusnév: MD100 / Modelname der Maus: MD100

Dongle Model Name: RG56 / 接收器型號: RG56 / Nome modello dongle: RG56 / Modèle du dongle: RG56 / Модель приемника: RG56 / 동글 모델 이름: RG56 / Nombre del modelo de la llave: RG56 / Nome de modelo do adaptador: RG56 / Denumire model dongle: RG56 / ඔබගේ මායිමෙහි නම: RG56 / Nama Model Dongle: RG56 / Назва модели адаптера: RG56 / שם דגם המכשיר: RG56 / Název modelu adaptéru dongle: RG56 / Nazwa modelu myszy: RG56 / Nazwa modelu klucza sprzętowego: RG56 / Názov modelu pamätového kľúča: RG56 / Dongle típusnév: RG56 / Modelname des Dongles: RG56

BAHASA INDONESIA

Kemasan Isi berisi:
a. MD100 mouse
b. USB Nano penerima 2.4GHz (tersimpan dalam mouse)
c. 1 baterai AA
d. Panduan Singkat
e. Kartu Garansi

Dimensi

Mouse: 107mm (P) x 60mm (L) x 27.8mm(T)
Dongle: 18.9mm (p) x 12mm (u) x 4.5mm (H)
Tali: 70mm (P) x 11mm (L) x 0.7mm (T)

Berat

Mouse: 56g (tanpa baterai)
Dongle: 1.6g

Daya

Mouse: Mode 2.4 GHz: 1.5V/50mA
Mode Bluetooth 5.0: 1.5V/50mA

Dongle: 5V/100mA

Versi Perangkat Keras

Mouse: GFSK / Bluetooth: V1.0
Dongle: GFSK: V1.0

Versi Perangkat Lunak

Mouse: GFSK / Bluetooth: V1.0
Dongle: GFSK: V1.0

Persyaratan sistem

Win 10 / 11 / macOS 10.14.6/ Chrome OS

Table Output RF CE MERAH (petunjuk 2014/53/UE)

Pita Frekuensi

Mouse: Mode 2.4 GHz: 2403-2479 MHz
Mode Bluetooth: 2402-2480 MHz

Unit Penerima Nirkabel: 2403-2479 MHz

Daya keluaran maksimum (EIRP)

Mouse: Mode 2.4 GHz: 4 dBm
Mode Bluetooth: 0 dBm

Unit Penerima Nirkabel: 0 dBm

Menyambung ke PC

Melalui 2,4 GHz:

1. Geser tombol daya ke mode 2,4 GHz.
2. Pasangkan unit USB nano penerima ke port USB yang tersedia.
3. Setelah berhasil dipasangkan ke PC, indikator Jalur Sambungan akan menyala hijau, lalu mati.

Melalui Bluetooth:

1. Geser tombol ke mode Bluetooth.
2. Tekan tombol pemasangan selama 3 detik untuk mengaktifkan mode pemasangan Bluetooth. (Indikator akan berkedip biru dengan cepat)
3. Di Windows, klik kanan ikon Bluetooth di bagian kanan panel tugas (atau klik dua kali ikon Bluetooth pada Panel Kontrol), lalu klik **Add a device (Tambahkan perangkat)** > **ASUS MD100 Mouse > Finish (Selesa).**
4. Setelah berhasil tersambung, indikator akan berhenti berkedip dan lampu biru tetap menyala selama beberapa detik sebelum mati. Setelah mouse dikonfigurasi ke PC, mouse akan tersambung secara otomatis ke PC saat mode Bluetooth diaktifkan selanjutnya.

CATATAN:

Mouse mendukung Bluetooth 5.0.

Menyesuaikan DPI

Untuk mengubah DPI, tekan tombol pengalihan DPI. Untuk indikasi DPI, lihat informasi berikut:

800 dpi: Indikator DPI akan berkedip sekali.
1000 dpi: Indikator DPI akan berkedip dua kali.
1600 dpi: Indikator DPI akan berkedip tiga kali.

Indikator baterai lemah

Ganti baterai saat indikator berkedip merah, yang menunjukkan bahwa daya mouse hampir habis. (kurang dari 20%)

PERHATIAN: BERISIKO MELEDAK JIKA BATERAI DIGANTI DENGAN JENIS YANG SALAH. BUANG BATERAI USANG SESUAI PETUNJUK.

Lain-Lain

Untuk menggunakan tali pengantungan, buka penutup atas, lalu tarik keluar tali pengantungan.
Untuk menyimpannya kembali, masukkan tali pengantungan ke lubang sabuk, lalu tekan penutup atas secara perlahan.
Untuk mengganti baterai, angkat penutup atas, ganti dengan baterai AA baru, lalu tekan penutup kembali ke atas mouse. Pastikan 3 skrup pada penutup atas tetap berada di atas magnet mouse.

UKRAЀНСЬКА

До комплекту входять:
а. Мыш MD100
б. Приймач USB Nano 2,4 ГГц (зберігається всередині миші)
с. 1 x батарея AA
d. Керівництво для швидкого початку експлуатації
e. Гарантійний талон

Габарити

Миша: 107 мм (п) x 60 мм (ш) x 27,8 мм (в)
Донгле: 18,9 мм (п) x 12 мм (ш) x 4,5 мм (в)
Талі: 70 мм (п) x 11 мм (ш) x 0,7 мм (в)

Вага

Миша: 56 г (без акумулятора)
Адаптер: 1,6 г

Параметри

Миша: Режим 2,4 ГГц: 1,5 В / 50 мА
Mode Bluetooth 5.0: 1,5 В / 50 мА

Адаптер: 5 В / 100 мА

Версія обднання

Миша: GFSK / Bluetooth: V1.0
Адаптер: GFSK: V1.0

Версія ПЗ

Миша: GFSK / Bluetooth: V1.0
Адаптер: GFSK: V1.0

Вимоги системи

Win 10 / 11 / macOS 10.14.6/ Chrome OS

Таблиця вихідних RF CE MERAH (Директива 2014/53/UE)

Вихідна потужність РЧ-сигналу CE RED (Директива 2014/53/UE)

Миша: Режим 2,4 ГГц: 2403-2479 МГц
Mode Bluetooth: 2402-2480 МГц

Unit Приймач Ниркабел: 2403-2479 МГц

Частотний діапазон

Миша: Режим 2,4 ГГц: 2403-2479 МГц
Mode Bluetooth: 2402-2480 МГц

Unit Приймач Ниркабел: 2403-2479 МГц

Максимальна напруга виходу (EIRP)

Миша: Режим 2,4 ГГц: 4 дБм
Mode Bluetooth: 0 дБм

Unit Приймач Ниркабел: 0 дБм

Підключення до ПК

1. Geser tombol daya ke mode 2,4 GHz.
2. Pasangkan unit USB nano penerima ke port USB yang tersedia.
3. Setelah berhasil dipasangkan ke PC, indikator Jalur Sambungan akan menyala hijau, lalu mati.

Melalui 2,4 GHz:

1. Geser tombol daya ke mode 2,4 GHz.
2. Pasangkan unit USB nano penerima ke port USB yang tersedia.
3. Setelah berhasil dipasangkan ke PC, indikator Jalur Sambungan akan menyala hijau, lalu mati.

Melalui Bluetooth:

1. Geser tombol ke mode Bluetooth.
2. Tekan tombol pemasangan selama 3 detik untuk mengaktifkan mode pemasangan Bluetooth. (Indikator akan berkedip biru dengan cepat)
3. Di Windows, klik kanan ikon Bluetooth di bagian kanan panel tugas (atau klik dua kali ikon Bluetooth pada Panel Kontrol), lalu klik **Add a device (Tambahkan perangkat)** > **ASUS MD100 Mouse > Finish (Selesa).**
4. Setelah berhasil tersambung, indikator akan berhenti berkedip dan lampu biru tetap menyala selama beberapa detik sebelum mati. Setelah mouse dikonfigurasi ke PC, mouse akan tersambung secara otomatis ke PC saat mode Bluetooth diaktifkan selanjutnya.

CATATAN:

Mouse mendukung Bluetooth 5.0.

Menyesuaikan DPI

Untuk mengubah DPI, tekan tombol pengalihan DPI. Untuk indikasi DPI, lihat informasi berikut:

800 dpi: Indikator DPI akan berkedip sekali.
1000 dpi: Indikator DPI akan berkedip dua kali.
1600 dpi: Indikator DPI akan berkedip tiga kali.

Indikator baterai lemah

Ganti baterai saat indikator berkedip merah, yang menunjukkan bahwa daya mouse hampir habis. (kurang dari 20%)

PERHATIAN: BERISIKO MELEDAK JIKA BATERAI DIGANTI DENGAN JENIS YANG SALAH. BUANG BATERAI USANG SESUAI PETUNJUK.

Lain-Lain

Untuk menggunakan tali pengantungan, buka penutup atas, lalu tarik keluar tali pengantungan.
Untuk menyimpannya kembali, masukkan tali pengantungan ke lubang sabuk, lalu tekan penutup atas secara perlahan.
Untuk mengganti baterai, angkat penutup atas, ganti dengan baterai AA baru, lalu tekan penutup kembali ke atas mouse. Pastikan 3 skrup pada penutup atas tetap berada di atas magnet mouse.

עברית

תוכן האריזה:
א. מוש MD100
ב. פרימאך USB Nano 2,4 GHz (זכור בתוך העכבר)
ג. 1 x סוללה AA
ד. מדריך להתחלה מהירה
ה. קרטות אחריות
ו. גרנטיית תלון

גאברטי

מישה: 107 מ"מ (ג) x 60 מ"מ (ש) x 27,8 מ"מ (ב)
דונגל: 18,9 מ"מ (ג) x 12 מ"מ (ש) x 4,5 מ"מ (ב)
רמיעה: 70 מ"מ (ג) x 11 מ"מ (ש) x 0,7 מ"מ (ב)

מסה

מישה: 56 גרם (בזא אקולומטור)
אדאפטר: 1,6 גרם

פרמטרי

מישה: רעזים 2,4 GHz: 1,5V/50mA
Mode Bluetooth 5.0: 1,5V/50mA

אדאפטר: 5V/100mA

גרסות חומרה

מישה: GFSK / Bluetooth: V1.0
אדאפטר: GFSK: V1.0

גרסות חוכנה

מישה: GFSK / Bluetooth: V1.0
אדאפטר: GFSK: V1.0

גרסות פז

מישה: GFSK / Bluetooth: V1.0
אדאפטר: GFSK: V1.0

במיקום הסיסטם

Win 10 / 11 / macOS 10.14.6/ Chrome OS

טבלת יציאת RF CE MERAH (דירקטיבה 2014/53/UE)

פוטנציאל יציאת RF CE RED (דירקטיבה 2014/53/UE)

מישה: רעזים 2,4 GHz: 2403-2479 MHz
Mode Bluetooth: 2402-2480 MHz

יחידת קבלת ללא חבל: 2403-2479 MHz

טווח תדרים

מישה: רעזים 2,4 GHz: 2403-2479 MHz
Mode Bluetooth: 2402-2480 MHz

יחידת קבלת ללא חבל: 2403-2479 MHz

מקסימום יציאת RF CE MERAH (דירקטיבה 2014/53/UE)

מישה: רעזים 2,4 GHz: 2403-2479 MHz
Mode Bluetooth: 2402-2480 MHz

יחידת קבלת ללא חבל: 2403-2479 MHz

מקסימום יציאת RF CE RED (דירקטיבה 2014/53/UE)

מישה: רעזים 2,4 GHz: 2403-2479 MHz
Mode Bluetooth: 2402-2480 MHz

יחידת קבלת ללא חבל: 2403-2479 MHz

מקסימום יציאת RF CE RED (דירקטיבה 2014/53/UE)

מישה: רעזים 2,4 GHz: 2403-2479 MHz
Mode Bluetooth: 2402-2480 MHz

יחידת קבלת ללא חבל: 2403-2479 MHz

מקסימום יציאת RF CE RED (דירקטיבה 2014/53/UE)

מישה: רעזים 2,4 GHz: 2403-2479 MHz
Mode Bluetooth: 2402-2480 MHz

יחידת קבלת ללא חבל: 2403-2479 MHz

מקסימום יציאת RF CE RED (דירקטיבה 2014/53/UE)

מישה: רעזים 2,4 GHz: 2403-2479 MHz
Mode Bluetooth: 2402-2480 MHz

יחידת קבלת ללא חבל: 2403-2479 MHz

מקסימום יציאת RF CE RED (דירקטיבה 2014/53/UE)

מישה: רעזים 2,4 GHz: 2403-2479 MHz
Mode Bluetooth: 2402-2480 MHz

יחידת קבלת ללא חבל: 2403-2479 MHz

מקסימום יציאת RF CE RED (דירקטיבה 2014/53/UE)

מישה: רעזים 2,4 GHz: 2403-2479 MHz
Mode Bluetooth: 2402-2480 MHz

יחידת קבלת ללא חבל: 2403-2479 MHz

מקסימום יציאת RF CE RED (דירקטיבה 2014/53/UE)

מישה: רעזים 2,4 GHz: 2403-2479 MHz
Mode Bluetooth: 2402-2480 MHz

יחידת קבלת ללא חבל: 2403-2479 MHz

מקסימום יציאת RF CE RED (דירקטיבה 2014/53/UE)

מישה: רעזים 2,4 GHz: 2403-2479 MHz
Mode Bluetooth: 2402-2480 MHz

יחידת קבלת ללא חבל: 2403-2479 MHz

מקסימום יציאת RF CE RED (דירקטיבה 2014/53/UE)

מישה: רעזים 2,4 GHz: 2403-2479 MHz
Mode Bluetooth: 2402-2480 MHz

יחידת קבלת ללא חבל: 2403-2479 MHz

מקסימום יציאת RF CE RED (דירקטיבה 2014/53/UE)

מישה: רעזים 2,4 GHz: 2403-2479 MHz
Mode Bluetooth: 2402-2480 MHz

יחידת קבלת ללא חבל: 2403-2479 MHz

מקסימום יציאת RF CE RED (דירקטיבה 2014/53/UE)

מישה: רעזים 2,4 GHz: 2403-2479 MHz
Mode Bluetooth: 2402-2480 MHz

יחידת קבלת ללא חבל: 2403-2479 MHz

מקסימום יציאת RF CE RED (דירקטיבה 2014/53/UE)

מישה: רעזים 2,4 GHz: 2403-2479 MHz
Mode Bluetooth: 2402-2480 MHz

יחידת קבלת ללא חבל: 2403-2479 MHz

מקסימום יציאת RF CE RED (דירקטיבה 2014/53/UE)

מישה: רעזים 2,4 GHz: 2403-2479 MHz
Mode Bluetooth: 2402-2480 MHz

יחידת קבלת ללא חבל: 2403-2479 MHz

מקסימום יציאת RF CE RED (דירקטיבה 2014/53/UE)

מישה: רעזים 2,4 GHz: 2403-2479 MHz
Mode Bluetooth: 2402-2480 MHz

יחידת קבלת ללא חבל: 2403-2479 MHz

מקסימום יציאת RF CE RED (דירקטיבה 2014/53/UE)

מישה: רעזים 2,4 GHz: 2403-2479 MHz
Mode Bluetooth: 2402-2480 MHz

יחידת קבלת ללא חבל: 2403-2479 MHz

מקסימום יציאת RF CE RED (דירקטיבה 2014/53/UE)

מישה: רעזים 2,4 GHz: 2403-2479 MHz
Mode Bluetooth: 2402-2480 MHz

יחידת קבלת ללא חבל: 2403-2479 MHz

מקסימום יציאת RF CE RED (דירקטיבה 2014/53/UE)

מישה: רעזים 2,4 GHz: 2403-2479 MHz
Mode Bluetooth: 2402-2480 MHz

יחידת קבלת ללא חבל: 2403-2479 MHz

מקסימום יציאת RF CE RED (דירקטיבה 2014/53/UE)

מישה: רעזים 2,4 GHz: 2403-2479 MHz
Mode Bluetooth: 2402-2480 MHz

יחידת קבלת ללא חבל: 2403-2479 MHz

מקסימום יציאת RF CE RED (דירקטיבה 2014/53/UE)

מישה: רעזים 2,4 GHz: 2403-2479 MHz
Mode Bluetooth: 2402-2480 MHz

יחידת קבלת ללא חבל: 2403-2479 MHz

BAHASA MELAYU

Pakej anda termasuk:
a. Mysz MD100
b. Penerima Nano USB 2.4 GHz (disimpan di dalam tetikus)
c. 1 x bateri AA
d. Panduan Permulaan Pantas
e. Borang Maklumat Waranti

Dimensi

Tetikus: 107mm (W) x 60mm (D) x 27.8mm(H)
Anak kunci: 18.9mm (L) x 12mm (W) x 4.5mm (H)
Tali pinggang: 70mm (L) x 11mm (W) x 0.7mm (H)

Weight

Mouse: 56g (tanpa bateri)
Anak kunci: 1.6g

Penarasan

Tetikus: Mod 2.4GHz: 1.5V/50mA
Mod Bluetooth 5.0: 1.5V/50mA

Klucz: 5V/100mA

Versi Perangkat Keras

Mouse: GFSK / Bluetooth: V1.0
Modul dongle: GFSK: V1.0

Versi Perangkat Lunak

Mouse: GFSK / Bluetooth: V1.0
Modul dongle: GFSK: V1.0

Persyaratan sistem

Win 10 / 11 / macOS 10.14.6/ Chrome OS

Table Output RF CE MERAH (petunjuk 2014/53/UE)

Pita Frekuensi

Mouse: Mode 2.4 GHz: 2403-2479 MHz
Mode Bluetooth: 2402-2480 MHz

Unit Penerima Nirkabel: 2403-2479 MHz