

4K ULTRA HD™

HDMI™  
HIGH-DEFINITION MULTIMEDIA INTERFACE

DLP™  
TEXAS INSTRUMENTS

4K  
UHD

HDR  
Compatible

# TABLE OF CONTENTS

<b>COPYRIGHT .....</b>	<b>5</b>
<i>Declaration Notice for Free and Open Source Software .....</i>	<i>5</i>
<i>Free and Open Source Software Notice.....</i>	<i>5</i>
<i>Licenses .....</i>	<i>6</i>
<b>SAFETY.....</b>	<b>10</b>
<i>Important Safety Instruction.....</i>	<i>10</i>
<i>Cleaning the Lens.....</i>	<i>11</i>
<i>3D Safety Information.....</i>	<i>11</i>
<i>Copyright.....</i>	<i>12</i>
<i>Disclaimer.....</i>	<i>12</i>
<i>Trademark Recognition .....</i>	<i>13</i>
<i>FCC.....</i>	<i>13</i>
<i>Declaration of Conformity for EU countries .....</i>	<i>14</i>
<i>WEEE.....</i>	<i>14</i>
<b>INTRODUCTION .....</b>	<b>15</b>
<i>Package Overview.....</i>	<i>15</i>
<i>Accessories .....</i>	<i>15</i>
<i>Optional accessories .....</i>	<i>16</i>
<i>Product Overview .....</i>	<i>16</i>
<i>Connections.....</i>	<i>17</i>
<i>Keypad and LED indicators.....</i>	<i>17</i>
<i>Remote control.....</i>	<i>18</i>
<b>SETUP AND INSTALLATION.....</b>	<b>19</b>
<i>Installing the projector .....</i>	<i>19</i>
<i>Connecting sources to the projector.....</i>	<i>21</i>
<i>Adjusting the projector image .....</i>	<i>23</i>
<i>Remote setup .....</i>	<i>24</i>
<b>USING THE PROJECTOR .....</b>	<b>26</b>
<i>Powering on / off the projector.....</i>	<i>26</i>
<i>Selecting an input source .....</i>	<i>27</i>
<i>Menu navigation and features .....</i>	<i>28</i>
<i>OSD Menu tree.....</i>	<i>29</i>
<i>Image picture mode menu.....</i>	<i>34</i>
<i>Image dynamic range menu .....</i>	<i>34</i>
<i>Image brightness menu .....</i>	<i>34</i>
<i>Image contrast menu.....</i>	<i>35</i>
<i>Image sharpness menu .....</i>	<i>35</i>
<i>Image gamma menu.....</i>	<i>35</i>

<i>Image dynamic black menu</i> .....	35
<i>Image color settings menu</i> .....	35
<i>Image wall color menu</i> .....	36
<i>Image 3D menu</i> .....	36
<i>Image reset menu</i> .....	36
<i>Display focus menu</i> .....	37
<i>Display geometric correction menu</i> .....	37
<i>Display digital zoom menu</i> .....	37
<i>Display image shift menu</i> .....	37
<i>Display gaming mode menu</i> .....	38
<i>Display advanced gaming menu</i> .....	38
<i>Display aspect ratio menu</i> .....	38
<i>Display light source mode menu</i> .....	39
<i>Display reset menu</i> .....	39
<i>Setup test pattern menu</i> .....	40
<i>Setup projection orientation menu</i> .....	40
<i>Setup language menu</i> .....	40
<i>Setup menu settings menu</i> .....	40
<i>Setup high altitude menu</i> .....	40
<i>Setup power settings menu</i> .....	40
<i>Setup security menu</i> .....	41
<i>Setup eye protection sensor menu</i> .....	41
<i>Setup startup logo menu</i> .....	41
<i>Setup background color menu</i> .....	41
<i>Setup device reset menu</i> .....	41
<i>Input auto source menu</i> .....	42
<i>Input remember last source menu</i> .....	42
<i>Input auto input switch menu</i> .....	42
<i>Input HDMI CEC settings menu</i> .....	42
<i>Input reset menu</i> .....	42
<i>Audio volume menu</i> .....	43
<i>Audio mute menu</i> .....	43
<i>Audio audio mode menu</i> .....	43
<i>Audio audio output menu</i> .....	43
<i>Audio reset menu</i> .....	43
<i>Information menu</i> .....	43

## **ADDITIONAL INFORMATION..... 44**

<i>Compatible resolutions</i> .....	44
<i>Image size and projection distance</i> .....	50
<i>Projector dimensions and ceiling mount installation</i> .....	51
<i>IR remote codes</i> .....	52
<i>Troubleshooting</i> .....	53
<i>Warning indicators</i> .....	54
<i>Specifications</i> .....	56
<i>Optoma global offices</i> .....	57

# COPYRIGHT

Copyright (C) 2023 by Optoma Corporation  
ALL RIGHTS RESERVED.

The copyright declaration applies to any part of the product, however if the declaration and Free and Open Source license requirements are in explicit conflict, the FOSS license prevails.

## Declaration Notice for Free and Open Source Software

The software included in this product contains copyrighted software that is originally licensed under the Free and Open Source Software licenses, such as Apache License 2.0, and SIL Open Font License (OFL). The related notices and disclaimers are described below.

## Free and Open Source Software Notice

### Roboto Light

- License Full Name: Apache License 2.0
- SPDX Short Identifier: Apache-2.0
- Modified Status: No
- Copyright Notice: Copyright 2011 Google Inc. Licensed under the Apache License, Version 2.0 (the "License"); you may not use this file except in compliance with the License. You may obtain a copy of the License at <http://www.apache.org/licenses/LICENSE-2.0>

Unless required by applicable law or agreed to in writing, software distributed under the License is distributed on an "AS IS" BASIS, WITHOUT WARRANTIES OR CONDITIONS OF ANY KIND, either express or implied. See the License for the specific language governing permissions and limitations under the License.

### Noto Serif KR

- License Full Name: SIL Open Font License 1.1
- SPDX Short Identifier: OFL-1.1
- Modified Status: No
- Copyright Notice: Copyright 2017 Adobe Systems Incorporated (<http://www.adobe.com/>)  
This Font Software is licensed under the SIL Open Font License, Version 1.1.  
This license is copied below, and is also available with a FAQ at: <https://scripts.sil.org/OFL>

# Licenses

## Apache License, Version 2.0, January 2004

<http://www.apache.org/licenses/>

### TERMS AND CONDITIONS FOR USE, REPRODUCTION, AND DISTRIBUTION

#### 1. Definitions.

“**License**” shall mean the terms and conditions for use, reproduction, and distribution as defined by Sections 1 through 9 of this document.

“**Licensor**” shall mean the copyright owner or entity authorized by the copyright owner that is granting the License.

“**Legal Entity**” shall mean the union of the acting entity and all other entities that control, are controlled by, or are under common control with that entity. For the purposes of this definition, “**control**” means (i) the power, direct or indirect, to cause the direction or management of such entity, whether by contract or otherwise, or (ii) ownership of fifty percent (50%) or more of the outstanding shares, or (iii) beneficial ownership of such entity.

“**You**” (or “**Your**”) shall mean an individual or Legal Entity exercising permissions granted by this License.

“**Source**” form shall mean the preferred form for making modifications, including but not limited to software source code, documentation source, and configuration files.

“**Object**” form shall mean any form resulting from mechanical transformation or translation of a Source form, including but not limited to compiled object code, generated documentation, and conversions to other media types.

“**Work**” shall mean the work of authorship, whether in Source or Object form, made available under the License, as indicated by a copyright notice that is included in or attached to the work (an example is provided in the Appendix below).

“**Derivative Works**” shall mean any work, whether in Source or Object form, that is based on (or derived from) the Work and for which the editorial revisions, annotations, elaborations, or other modifications represent, as a whole, an original work of authorship. For the purposes of this License, Derivative Works shall not include works that remain separable from, or merely link (or bind by name) to the interfaces of, the Work and Derivative Works thereof.

“**Contribution**” shall mean any work of authorship, including the original version of the Work and any modifications or additions to that Work or Derivative Works thereof, that is intentionally submitted to Licensor for inclusion in the Work by the copyright owner or by an individual or Legal Entity authorized to submit on behalf of the copyright owner. For the purposes of this definition, “**submitted**” means any form of electronic, verbal, or written communication sent to the Licensor or its representatives, including but not limited to communication on electronic mailing lists, source code control systems, and issue tracking systems that are managed by, or on behalf of, the Licensor for the purpose of discussing and improving the Work, but excluding communication that is conspicuously marked or otherwise designated in writing by the copyright owner as “**Not a Contribution**.”

“**Contributor**” shall mean Licensor and any individual or Legal Entity on behalf of whom a Contribution has been received by Licensor and subsequently incorporated within the Work.

**2. Grant of Copyright License.** Subject to the terms and conditions of this License, each Contributor hereby grants to You a perpetual, worldwide, non-exclusive, no-charge, royalty-free, irrevocable copyright license to reproduce, prepare Derivative Works of, publicly display, publicly perform, sublicense, and distribute the Work and such Derivative Works in Source or Object form.

**3. Grant of Patent License.** Subject to the terms and conditions of this License, each Contributor hereby grants to You a perpetual, worldwide, non-exclusive, no-charge, royalty-free, irrevocable (except as stated in this section) patent license to make, have made, use, offer to sell, sell, import, and otherwise transfer the Work, where such license applies only to those patent claims licensable by such Contributor that are necessarily infringed by their Contribution(s) alone or by combination of their Contribution(s) with the Work to which such Contribution(s) was submitted. If You institute patent litigation against any entity (including a cross-claim or counterclaim in a lawsuit) alleging that the Work or a Contribution incorporated within the Work constitutes direct or contributory patent infringement, then any patent licenses granted to You under this License for that Work shall terminate as of the date such litigation is filed.

**4. Redistribution.** You may reproduce and distribute copies of the Work or Derivative Works thereof in any medium, with or without modifications, and in Source or Object form, provided that You meet the following conditions:

1. You must give any other recipients of the Work or Derivative Works a copy of this License; and
2. You must cause any modified files to carry prominent notices stating that You changed the files; and
3. You must retain, in the Source form of any Derivative Works that You distribute, all copyright, patent, trademark, and attribution notices from the Source form of the Work, excluding those notices that do not pertain to any part of the Derivative Works; and
4. If the Work includes a “**NOTICE**” text file as part of its distribution, then any Derivative Works that You distribute must include a readable copy of the attribution notices contained within such NOTICE file, excluding those notices that do not pertain to any part of the Derivative Works, in at least one of the following places: within a NOTICE text file distributed as part of the Derivative Works; within the Source form or documentation, if provided along with the Derivative Works; or, within a display generated by the Derivative Works, if and wherever such third-party notices normally appear. The contents of the NOTICE file are for informational purposes only and do not modify the License. You may add Your own attribution notices within Derivative Works that You distribute, alongside or as an addendum to the NOTICE text from the Work, provided that such additional attribution notices cannot be construed as modifying the License.

You may add Your own copyright statement to Your modifications and may provide additional or different license terms and conditions for use, reproduction, or distribution of Your modifications, or for any such Derivative Works as a whole, provided Your use, reproduction, and distribution of the Work otherwise complies with the conditions stated in this License.

**5. Submission of Contributions.** Unless You explicitly state otherwise, any Contribution intentionally submitted for inclusion in the Work by You to the Licensor shall be under the terms and conditions of this License, without any additional terms or conditions. Notwithstanding the above, nothing herein shall supersede or modify the terms of any separate license agreement you may have executed with Licensor regarding such Contributions.

**6. Trademarks.** This License does not grant permission to use the trade names, trademarks, service marks, or product names of the Licensor, except as required for reasonable and customary use in describing the origin of the Work and reproducing the content of the NOTICE file.

**7. Disclaimer of Warranty.** Unless required by applicable law or agreed to in writing, Licensor provides the Work (and each Contributor provides its Contributions) on an “AS IS” BASIS, WITHOUT WARRANTIES OR CONDITIONS OF ANY KIND, either express or implied, including, without limitation, any warranties or conditions of TITLE, NON-INFRINGEMENT, MERCHANTABILITY, or FITNESS FOR A PARTICULAR PURPOSE. You are solely responsible for determining the appropriateness of using or redistributing the Work and assume any risks associated with Your exercise of permissions under this License.

**8. Limitation of Liability.** In no event and under no legal theory, whether in tort (including negligence), contract, or otherwise, unless required by applicable law (such as deliberate and grossly negligent acts) or agreed to in writing, shall any Contributor be liable to You for damages, including any direct, indirect, special, incidental, or consequential damages of any character arising as a result of this License or out of the use or inability to use the Work (including but not limited to damages for loss of goodwill, work stoppage, computer failure or malfunction, or any and all other commercial damages or losses), even if such Contributor has been advised of the possibility of such damages.

**9. Accepting Warranty or Additional Liability.** While redistributing the Work or Derivative Works thereof, You may choose to offer, and charge a fee for, acceptance of support, warranty, indemnity, or other liability obligations and/or rights consistent with this License. However, in accepting such obligations, You may act only on Your own behalf and on Your sole responsibility, not on behalf of any other Contributor, and only if You agree to indemnify, defend, and hold each Contributor harmless for any liability incurred by, or claims asserted against, such Contributor by reason of your accepting any such warranty or additional liability.

END OF TERMS AND CONDITIONS

## HOW TO APPLY THE APACHE LICENSE TO YOUR WORK

Include a copy of the Apache License, typically in a file called LICENSE, in your work, and consider also including a NOTICE file that references the License.

To apply the Apache License to specific files in your work, attach the following boilerplate declaration, replacing the fields enclosed by brackets “[ ]” with your own identifying information. (Don’t include the brackets!) Enclose the text in the appropriate comment syntax for the file format. We also recommend that you include a file or class name and description of purpose on the same “printed page” as the copyright notice for easier identification within third-party archives.

Copyright [yyyy] [name of copyright owner]

Licensed under the Apache License, Version 2.0 (the “License”); you may not use this file except in compliance with the License. You may obtain a copy of the License at

<http://www.apache.org/licenses/LICENSE-2.0>

Unless required by applicable law or agreed to in writing, software distributed under the License is distributed on an “AS IS” BASIS, WITHOUT WARRANTIES OR CONDITIONS OF ANY KIND, either express or implied.

See the License for the specific language governing permissions and limitations under the License.

## SIL OPEN FONT LICENSE, Version 1.1 - 26 February 2007

### PREAMBLE

The goals of the Open Font License (OFL) are to stimulate worldwide development of collaborative font projects, to support the font creation efforts of academic and linguistic communities, and to provide a free and open framework in which fonts may be shared and improved in partnership with others.

The OFL allows the licensed fonts to be used, studied, modified and redistributed freely as long as they are not sold by themselves. The fonts, including any derivative works, can be bundled, embedded, redistributed and/or sold with any software provided that any reserved names are not used by derivative works. The fonts and derivatives, however, cannot be released under any other type of license. The requirement for fonts to remain under this license does not apply to any document created using the fonts or their derivatives.

### DEFINITIONS

“Font Software” refers to the set of files released by the Copyright Holder(s) under this license and clearly marked as such. This may include source files, build scripts and documentation.

“Reserved Font Name” refers to any names specified as such after the copyright statement(s).

“Original Version” refers to the collection of Font Software components as distributed by the Copyright Holder(s).

“Modified Version” refers to any derivative made by adding to, deleting, or substituting — in part or in whole — any of the components of the Original Version, by changing formats or by porting the Font Software to a new environment.

“Author” refers to any designer, engineer, programmer, technical writer or other person who contributed to the Font Software.

## **PERMISSION & CONDITIONS**

Permission is hereby granted, free of charge, to any person obtaining a copy of the Font Software, to use, study, copy, merge, embed, modify, redistribute, and sell modified and unmodified copies of the Font Software, subject to the following conditions:

1. Neither the Font Software nor any of its individual components, in Original or Modified Versions, may be sold by itself.
2. Original or Modified Versions of the Font Software may be bundled, redistributed and/or sold with any software, provided that each copy contains the above copyright notice and this license. These can be included either as stand-alone text files, human-readable headers or in the appropriate machine-readable metadata fields within text or binary files as long as those fields can be easily viewed by the user.
3. No Modified Version of the Font Software may use the Reserved Font Name(s) unless explicit written permission is granted by the corresponding Copyright Holder. This restriction only applies to the primary font name as presented to the users.
4. The name(s) of the Copyright Holder(s) or the Author(s) of the Font Software shall not be used to promote, endorse or advertise any Modified Version, except to acknowledge the contribution(s) of the Copyright Holder(s) and the Author(s) or with their explicit written permission.
5. The Font Software, modified or unmodified, in part or in whole, must be distributed entirely under this license, and must not be distributed under any other license. The requirement for fonts to remain under this license does not apply to any document created using the Font Software.

## **TERMINATION**



This license becomes null and void if any of the above conditions are not met.

## **DISCLAIMER**

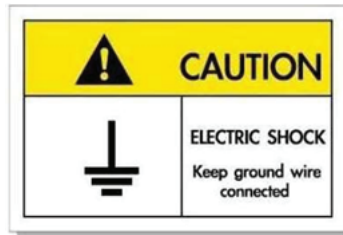
THE FONT SOFTWARE IS PROVIDED "AS IS", WITHOUT WARRANTY OF ANY KIND, EXPRESS OR IMPLIED, INCLUDING BUT NOT LIMITED TO ANY WARRANTIES OF MERCHANTABILITY, FITNESS FOR A PARTICULAR PURPOSE AND NON-INFRINGEMENT OF COPYRIGHT, PATENT, TRADEMARK, OR OTHER RIGHT. IN NO EVENT SHALL THE COPYRIGHT HOLDER BE LIABLE FOR ANY CLAIM, DAMAGES OR OTHER LIABILITY, INCLUDING ANY GENERAL, SPECIAL, INDIRECT, INCIDENTAL, OR CONSEQUENTIAL DAMAGES, WHETHER IN AN ACTION OF CONTRACT, TORT OR OTHERWISE, ARISING FROM, OUT OF THE USE OR INABILITY TO USE THE FONT SOFTWARE OR FROM OTHER DEALINGS IN THE FONT SOFTWARE.



# SAFETY

	The lightning flash with arrow head within an equilateral triangle is intended to alert the user to the presence of uninsulated "dangerous voltage" within the product's enclosure that may be of sufficient magnitude to constitute a risk of electric shock to persons.
	The exclamation point within an equilateral triangle is intended to alert the user to the presence of important operating and maintenance (servicing) instructions in the literature accompanying the appliance.

Please follow all warnings, precautions and maintenance as recommended in this user's guide.



To avoid electric shock, the unit and its peripherals must be properly grounded (earthed).

## Important Safety Instruction

- Do not block any ventilation openings. To ensure reliable operation of the projector and to protect from over heating, it is recommended to install the projector in a location that does not block ventilation. As an example, do not place the projector on a crowded coffee table, sofa, bed, etc. Do not put the projector in an enclosure such as a book case or a cabinet that restricts air flow.
- To reduce the risk of fire and/or electric shock, do not expose the projector to rain or moisture. Do not install near heat sources such as radiators, heaters, stoves or any other apparatus such as amplifiers that emits heat.
- Do not let objects or liquids enter the projector. They may touch dangerous voltage points and short out parts that could result in fire or electric shock.
- Do not use under the following conditions:
  - In extremely hot, cold or humid environments.
    - (i) Ensure that the ambient room temperature is within 0°C ~ 40°C
    - (ii) Relative humidity is 10% ~ 85%
  - In areas susceptible to excessive dust and dirt.
  - Near any appliance generating a strong magnetic field.
  - In direct sunlight.
- Do not use the projector in places where flammable gases or explosives gases may be present in the atmosphere. The lamp inside the projector becomes very hot during operation and the gases may ignite and result in a fire.
- Do not use the unit if it has been physically damaged or abused. Physical damage/abuse would be (but not limited to):
  - Unit has been dropped.
  - Power supply cord or plug has been damaged.
  - Liquid has been spilled on to the projector.
  - Projector has been exposed to rain or moisture.
  - Something has fallen in the projector or something is loose inside.

- Do not place the projector on an unstable surface. The projector may fall over resulting in injury or the projector may become damaged.
- Do not block the light coming out of the projector lens when in operation. The light will heat the object and could melt, cause burns or start a fire.
- Please do not open or disassemble the projector as this may cause electric shock.
- Do not attempt to service the unit yourself. Opening or removing covers may expose you to dangerous voltages or other hazards. Please call Optoma before you send the unit for repair.
- See projector enclosure for safety related markings.
- The unit should only be repaired by appropriate service personnel.
- Only use attachments/accessories specified by the manufacturer.
- Do not look into straight into the projector lens during operation. The bright light may harm your eyes.
- Turn off and unplug the power plug from the AC outlet before cleaning the product.
- Use a soft dry cloth with mild detergent to clean the display housing. Do not use abrasive cleaners, waxes or solvents to clean the unit.
- Disconnect the power plug from AC outlet if the product is not being used for a long period of time.
- *Do not setup the projector in places where it might be subjected to vibration or shock.*
- *Do not touch the lens with bare hands.*
- *Remove battery/batteries from remote control before storage. If the battery/batteries are left in the remote for long periods, they may leak.*
- *Do not use or store the projector in places where smoke from oil or cigarettes may be present, as it can adversely affect the quality of the projector performance.*
- *Use a power strip and or surge protector. As power outages and brown-outs can KILL devices.*

## Cleaning the Lens

- Before cleaning the lens, be sure to turn off the projector and unplug the power cord to allow it to completely cool down.
- Use a compressed air tank to remove the dust.
- Use a special cloth for cleaning lens and gently wipe the lens. Do not touch the lens with your fingers.
- Do not use alkaline/acid detergents or volatile solvents such as alcohol for cleaning lens. If the lens is damaged due to the cleaning process, it is not covered by the warranty.



Warning: Do not use a spray containing flammable gases to remove dust or dirt from the lens. This may cause a fire due to excessive heat inside the projector.



Warning: Do not clean the lens if the projector is warming up as this may cause the lens' surface film to peel off.



Warning: Do not wipe or tap the lens with a hard object.

## 3D Safety Information

Please follow all warnings and precautions as recommended before you or your child use the 3D function.

### Warning

Children and teenagers may be more susceptible to health issues associated with viewing in 3D and should be closely supervised when viewing these images.

## Photosensitive Seizure Warning and Other Health Risks

- Some viewers may experience an epileptic seizure or stroke when exposed to certain flashing images or lights contained in certain Projector pictures or video games. If you suffer from, or have a family history of epilepsy or strokes, please consult with a medical specialist before using the 3D function.
- Even those without a personal or family history of epilepsy or stroke may have an undiagnosed condition that can cause photosensitive epileptic seizures.
- Pregnant women, the elderly, sufferers of serious medical conditions, those who are sleep deprived or under the influence of alcohol should avoid utilizing the unit's 3D functionality.
- If you experience any of the following symptoms, stop viewing 3D pictures immediately and consult a medical specialist: (1) altered vision; (2) light-headedness; (3) dizziness; (4) involuntary movements such as eye or muscle twitching; (5) confusion; (6) nausea; (7) loss of awareness; (8) convulsions; (9) cramps; and/ or (10) disorientation. Children and teenagers may be more likely than adults to experience these symptoms. Parents should monitor their children and ask whether they are experiencing these symptoms.
- Watching 3D projection may also cause motion sickness, perceptual after effects, disorientation, eye strain and decreased postural stability. It is recommended that users take frequent breaks to lessen the potential of these effects. If your eyes show signs of fatigue or dryness or if you have any of the above symptoms, immediately discontinue use of this device and do not resume using it for at least thirty minutes after the symptoms have subsided.
- Watching 3D projection while sitting too close to the screen for an extended period of time may damage your eyesight. The ideal viewing distance should be at least three times the screen height. It is recommended that the viewer's eyes are level with the screen.
- Watching 3D projection while wearing 3D glasses for an extended period of time may cause a headache or fatigue. If you experience a headache, fatigue or dizziness, stop viewing the 3D projection and rest.
- Do not use the 3D glasses for any other purpose than for watching 3D projection.
- Wearing the 3D glasses for any other purpose (as general spectacles, sunglasses, protective goggles, etc.) may be physically harmful to you and may weaken your eyesight.
- Viewing in 3D projection may cause disorientation for some viewers. Accordingly, DO NOT place your 3D PROJECTOR near open stairwells, cables, balconies, or other objects that can be tripped over, run into, knocked down, broken or fallen over.

## Copyright

This publication, including all photographs, illustrations and software, is protected under international copyright laws, with all rights reserved. Neither this manual, nor any of the material contained herein, may be reproduced without written consent of the author.

© Copyright 2023

## Disclaimer

The information in this document is subject to change without notice. The manufacturer makes no representations or warranties with respect to the contents hereof and specifically disclaims any implied warranties of merchantability or fitness for any particular purpose. The manufacturer reserves the right to revise this publication and to make changes from time to time in the content hereof without obligation of the manufacturer to notify any person of such revision or changes.

## Trademark Recognition

Kensington is a U.S. registered trademark of ACCO Brand Corporation with issued registrations and pending applications in other countries throughout the world.

HDMI, the HDMI Logo, and High-Definition Multimedia Interface are trademarks or registered trademarks of HDMI Licensing LLC in the United States and other countries.

DLP®, DLP Link and the DLP logo are registered trademarks of Texas Instruments and BrilliantColor™ is a trademark of Texas Instruments.

All other product names used in this manual are the properties of their respective owners and are Acknowledged.

## FCC

This device has been tested and found to comply with the limits for a Class B digital device pursuant to Part 15 of the FCC rules. These limits are designed to provide reasonable protection against harmful interference in a residential installation. This device generates, uses and can radiate radio frequency energy and, if not installed and used in accordance with the instructions, may cause harmful interference to radio communications.

However, there is no guarantee that interference will not occur in a particular installation. If this device does cause harmful interference to radio or television reception, which can be determined by turning the device off and on is encouraged to try to correct the interference by one or more of the following measures:

- Reorient or relocate the receiving antenna.
- Increase the separation between the device and receiver.
- Connect the device into an outlet on a circuit different from that to which the receiver is connected.
- Consult the dealer or an experienced radio/television technician for help.

## Notice: Shielded cables

All connections to other computing devices must be made using shielded cables to maintain compliance with FCC regulations.

### Caution

Changes or modifications not expressly approved by the manufacturer could void the user's authority, which is granted by the Federal Communications Commission, to operate this projector.

### Operation Conditions

This device complies with Part 15 of the FCC Rules. Operation is subject to the following two conditions:

1. This device may not cause harmful interference and
2. This device must accept any interference received, including interference that may cause undesired operation.

### Notice: Canadian users

This Class B digital apparatus complies with Canadian ICES-003.

Remarque à l'intention des utilisateurs canadiens

Cet appareil numérique de la classe B est conforme à la norme NMB-003 du Canada.

## Declaration of Conformity for EU countries

- EMC Directive 2014/30/EC (including amendments)
- Low Voltage Directive 2014/35/EC
- RED 2014/53/EU (if product has RF function)

## WEEE



### Disposal instructions

Do not throw this electronic device into the trash when discarding. To minimize pollution and ensure utmost protection of the global environment, please recycle it.

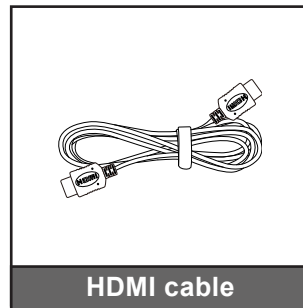
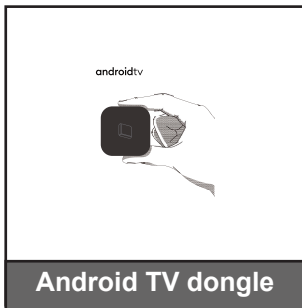
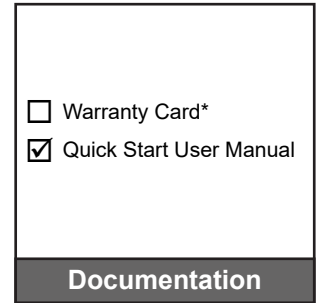
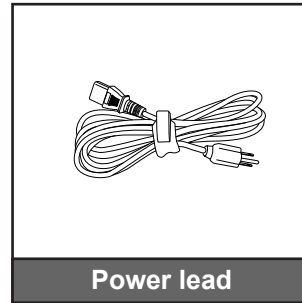
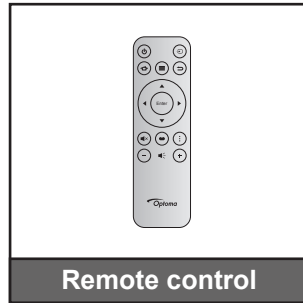
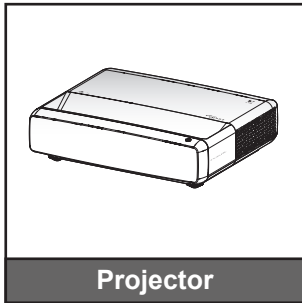
# INTRODUCTION

## Package Overview

Carefully unpack and verify that you have the items listed below under standard accessories. Some of the items under optional accessories may not be available depending on the model, specification and your region of purchase. Please check with your place of purchase. Some accessories may vary from region to region.

The warranty card is only supplied in some specific regions. Please consult your dealer for detailed information.

## Accessories



### Note:

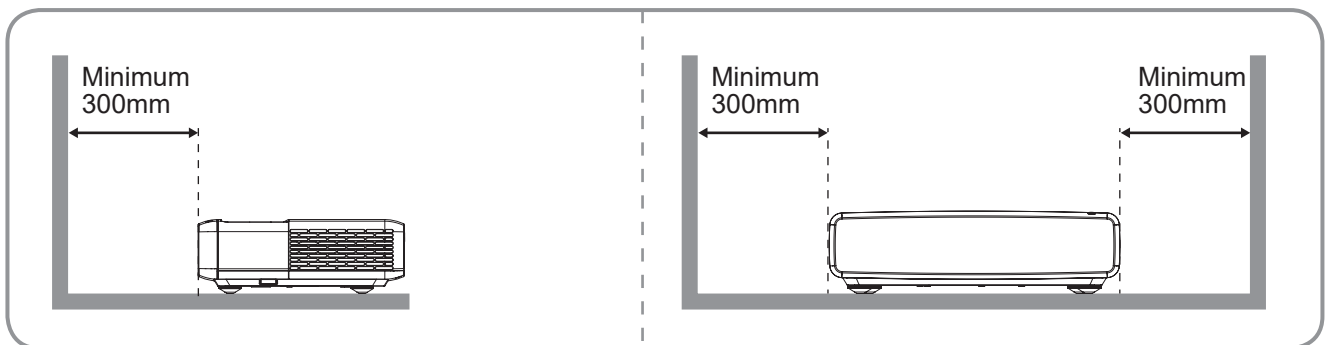
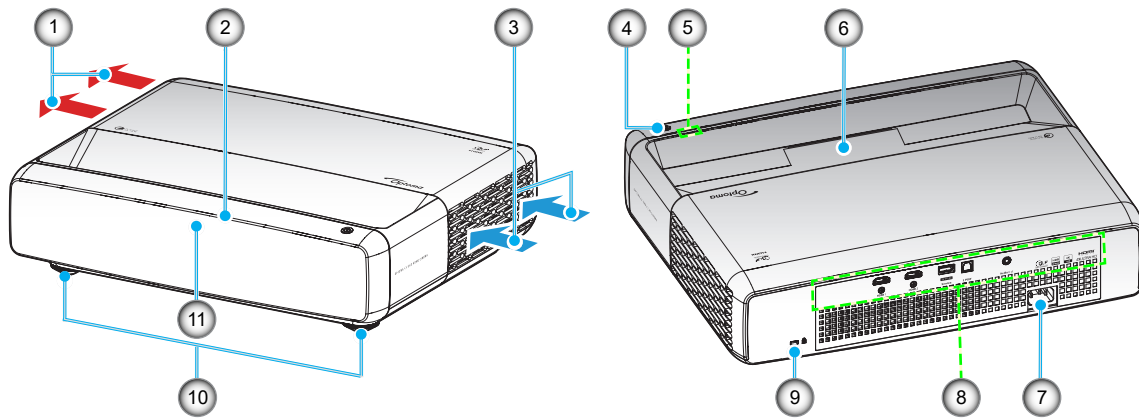
- The remote control, Android TV Dongle, and HDMI cable may vary depending on the region and model.
- \* For warranty Information, please visit <https://www.optoma.com/support/download>.

# INTRODUCTION

## Optional accessories

**Note:** *Optional accessories vary depending on model, specification and region.*

## Product Overview



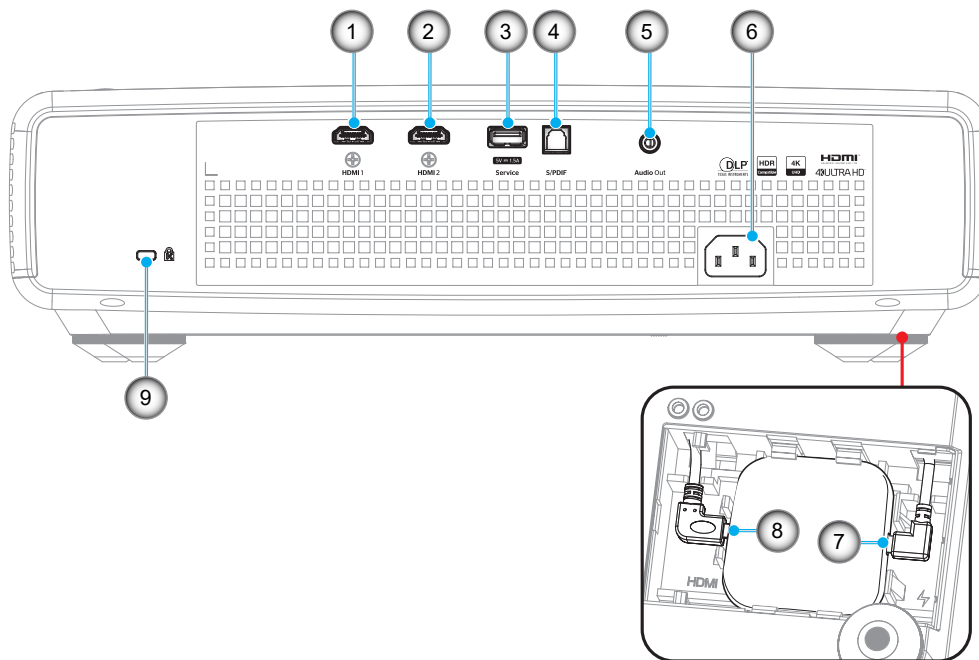
**Note:**

- *Do not block projector intake and exhaust vents.*
- *When operating the projector in an enclosed space, allow at least 30cm (12") clearance around the intake and exhaust vents.*

No	Item	No	Item
1.	Ventilation (outlet)	7.	Power Socket
2.	Top IR Receiver	8.	Input / Output
3.	Ventilation (inlet)	9.	Kensington™ Lock Port
4.	Power Button	10.	Tilt-Adjustment Feet
5.	LED Indicators	11.	Front IR Receiver
6.	Lens		

# INTRODUCTION

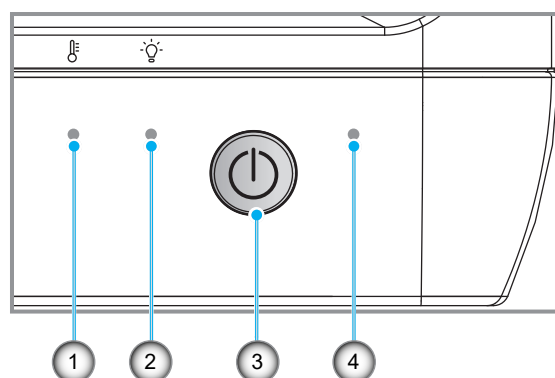
## Connections



No	Item	No	Item
1.	HDMI 1 Connector (4K 60Hz)	6.	Power Socket
2.	HDMI 2 Connector (4K 60Hz)	7.	USB Power Out (5V/1.5A) (micro USB connector for Android TV dongle)
3.	USB Power OUT (5V/1.5A) Connector(*)	8.	HDMI 3 Connector (micro HDMI connector for ATV dongle)
4.	S/PDIF Connector (PCM 2-channel)	9.	Kensington™ Lock Port
5.	Audio Out Connector		

**Note:** (\*) Not recommended for charging a cell phone.

## Keypad and LED indicators

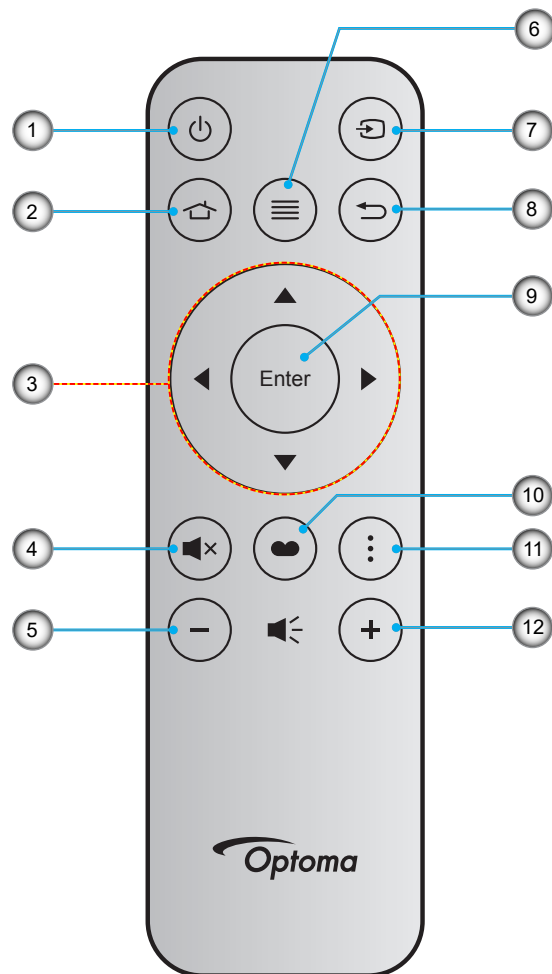


No	Item	No	Item
1.	Temp LED	3.	Power Button
2.	Light Source LED	4.	Power LED



# INTRODUCTION

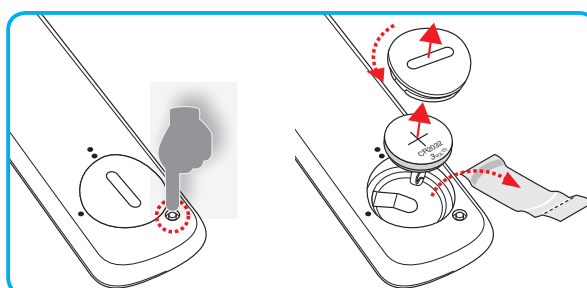
## Remote control



No	Item	No	Item
1.	Power On / Off	7.	Source
2.	HDMI3	8.	Return
3.	Four Directional Select Keys	9.	Enter
4.	Mute	10.	Picture Mode
5.	Volume -	11.	Focus Pattern
6.	Menu	12.	Volume +

### Note:

- The actual remote control may vary depending on the region.
- Some keys may have no function for models that do not support these features.
- Before using the remote control for the first time, press the lock button, open the battery compartment cover, and then remove the transparent insulation tape as illustrated below. See page 23 for battery installation.

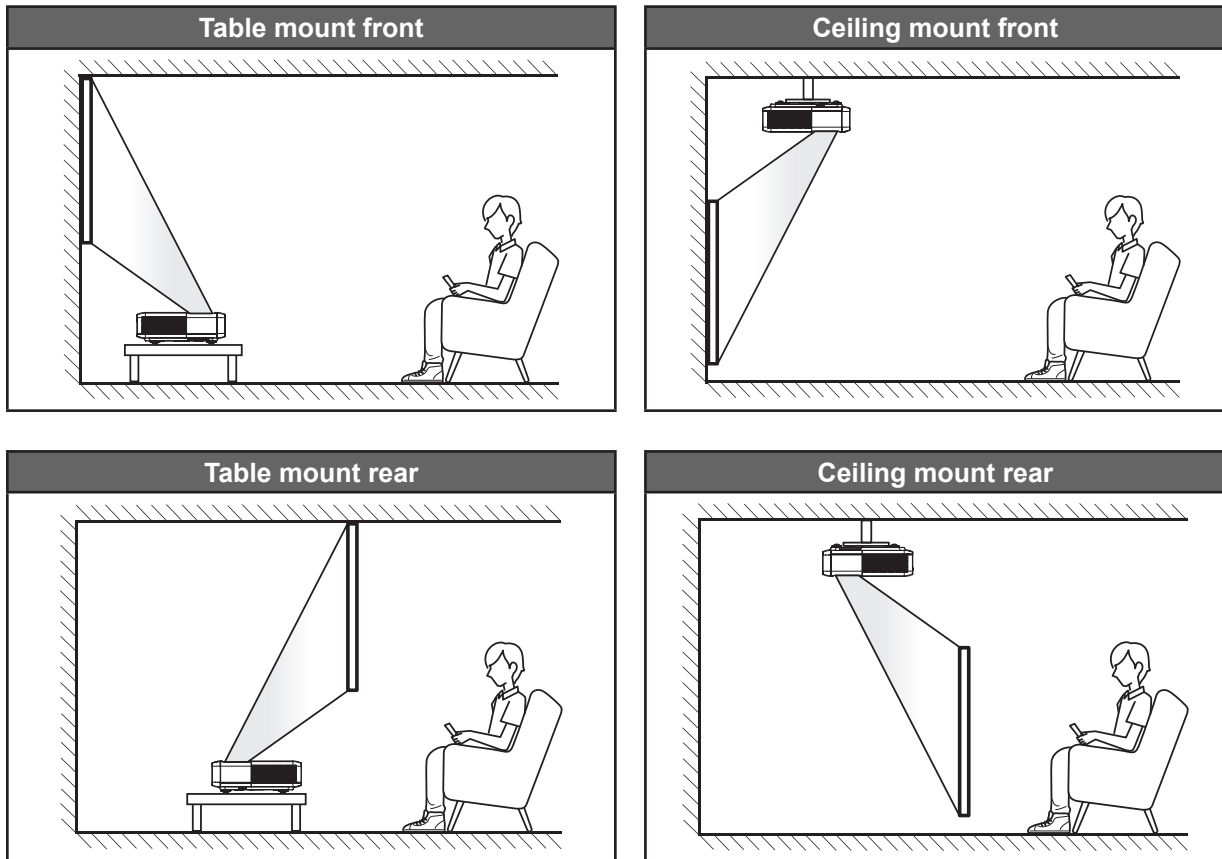


# SETUP AND INSTALLATION

## Installing the projector

Your projector is designed to be installed in one of four possible positions.

Your room layout or personal preference will dictate which installation location you select. Take into consideration the size and position of your screen, the location of a suitable power outlet, as well as the location and distance between the projector and the rest of your equipment.



Projector should be placed flat on a surface and 90 degrees / perpendicular to the screen.

- How to determine projector location for a given screen size, please refer to distance table on page 49.
- How to determine screen size for a given distance, please refer to distance table on page 49.

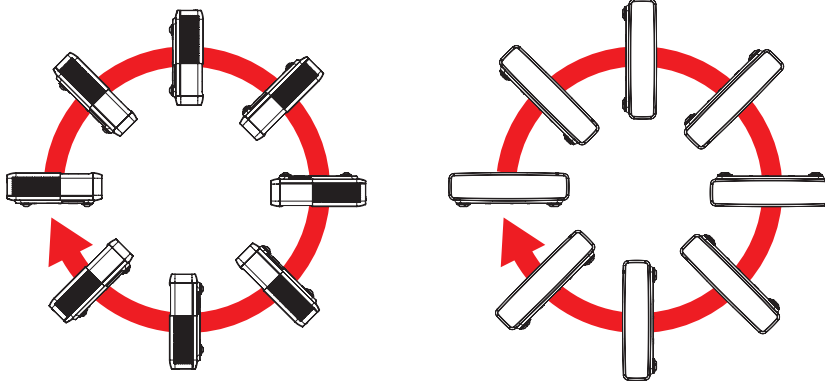
### Note:

- *The further away the projector is placed from the screen the projected image size increases and vertical offset also increases proportionally.*
- *The vertical offset may vary between projectors, due to the limitations of optical manufacturing. Additional adjustments may occur when switching projectors.*

# SETUP AND INSTALLATION

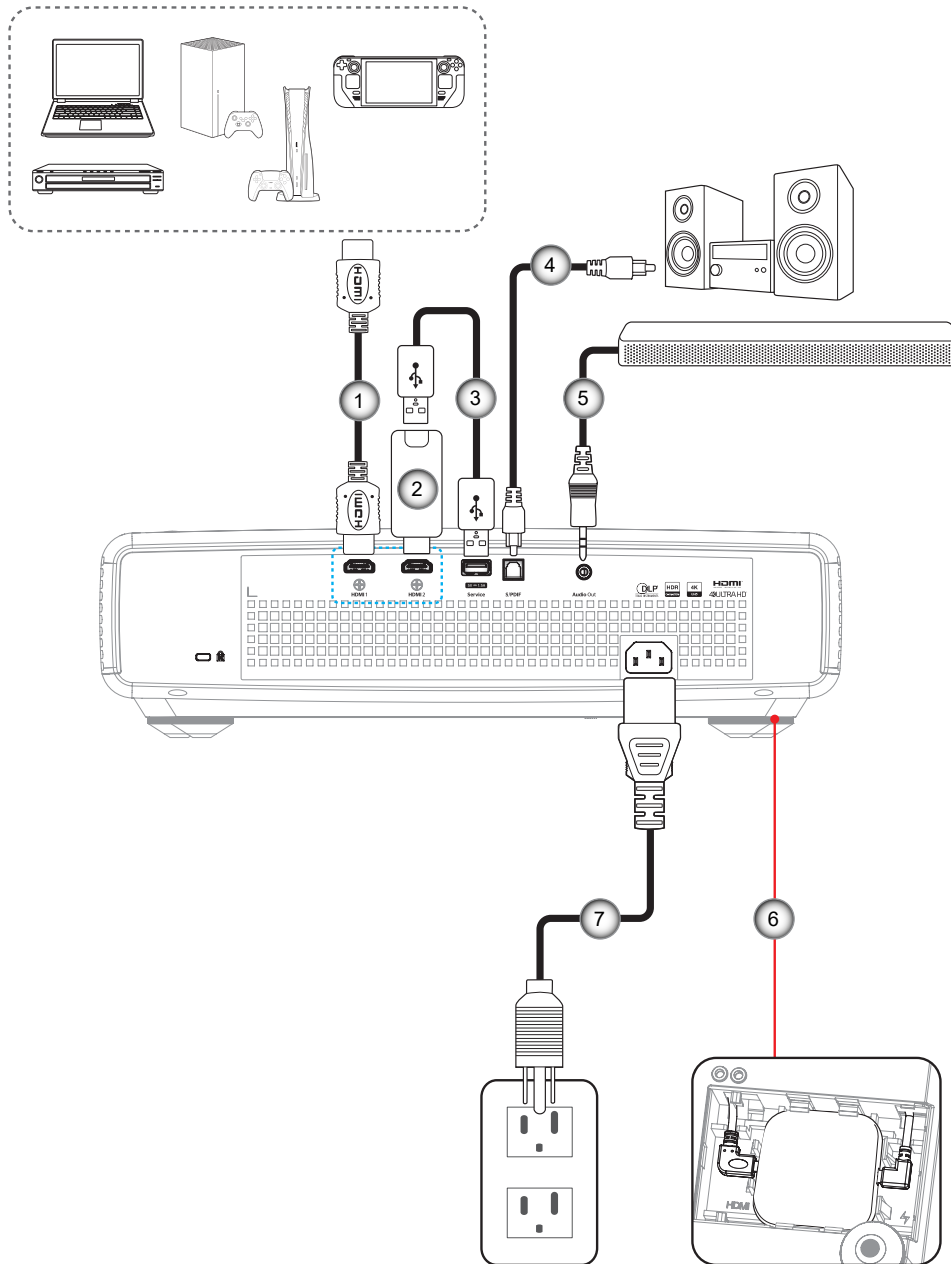
## Projector installation notice

- 360 degree projection & Portrait mode



# SETUP AND INSTALLATION

## Connecting sources to the projector



No	Item
1.	HDMI Cable
2.	HDMI Dongle
3.	USB Power Cable
4.	S/PDIF Out Cable

No	Item
5.	Audio Out Cable
6.	Android TV Dongle (refer to page 21)
7.	Power Cord

### Note:

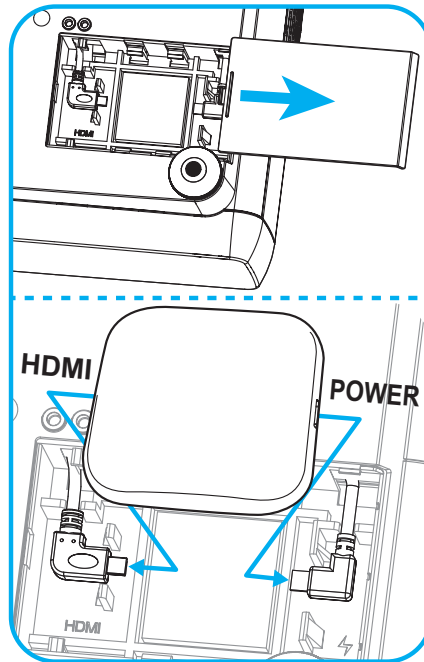
- To ensure the best image quality and avoid connection errors, we recommend the use of Premium HDMI cables. For the cable lengths longer than 20-25 feet, we strongly recommend using Active Fiber HDMI cables.



# SETUP AND INSTALLATION

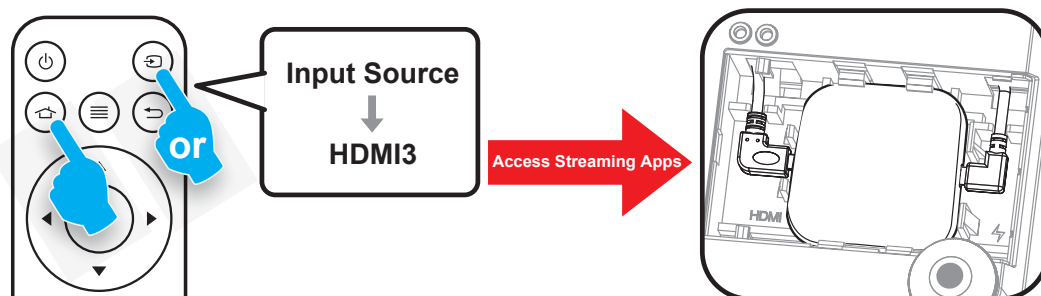
## Installing and using the Android TV dongle

To install and start using the Android TV dongle, do the following:

1. Power off the projector. (Refer to page 25)
2. Remove the Android TV dongle compartment door on the bottom of the projector.
3. Align and install the Android TV dongle into its compartment.
4. Connect the HDMI and power cables to their respective connectors on the sides of the Android TV dongle.



5. Power on the projector. (Refer to page 25)
6. Press either the “” button or the “” button > HDMI3 on the remote control to access the streaming apps.



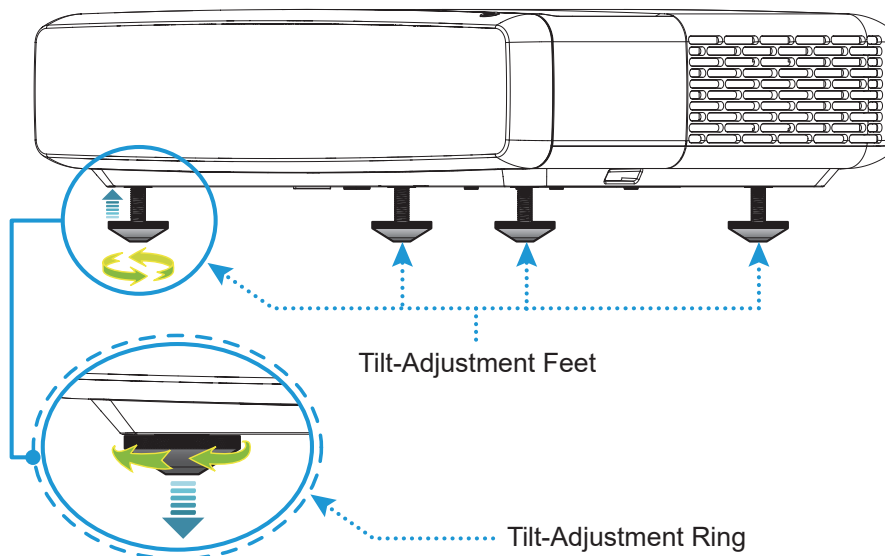
# SETUP AND INSTALLATION

## Adjusting the projector image

### Image height

The projector is equipped with elevator feet for adjusting the image height.

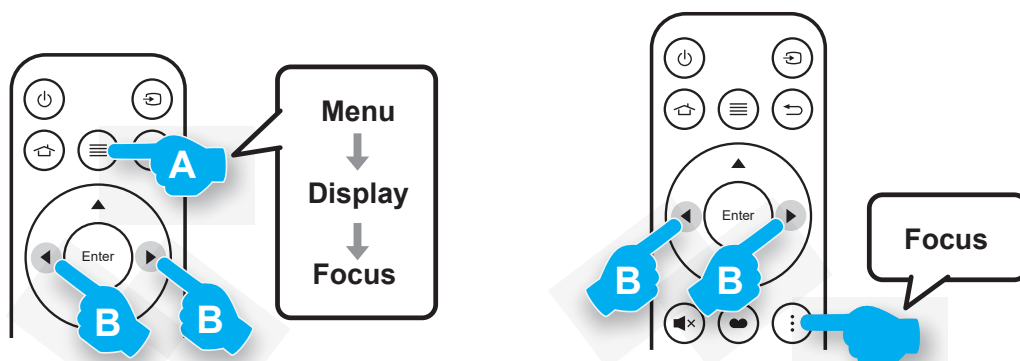
1. Locate the adjustable foot you wish to adjust on the underside of the projector.
2. Rotate the adjustable foot clockwise or counterclockwise to raise or lower the projector.



### Focus

To adjust the focus, do the following:

1. Open either “☰” “Display-->Focus” menu or press the “⋮” button on the remote control.
2. Press the “◀” or “▶” button on the remote control until the image is sharp and legible.

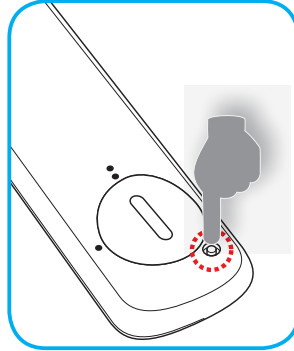


# SETUP AND INSTALLATION

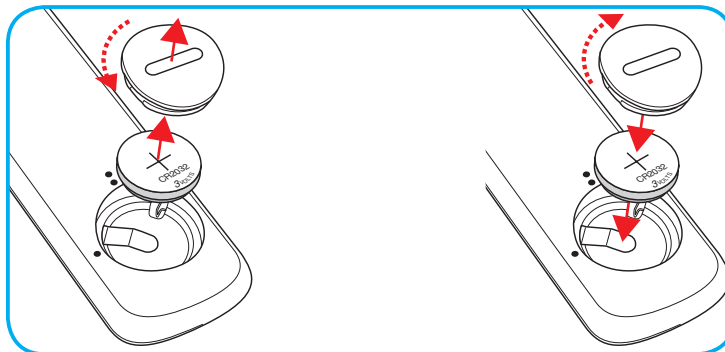
## Remote setup

### Installing / replacing the battery

1. Press the lock button next to the battery compartment cover.



2. Use a coin to turn the battery cover counterclockwise until the cover opens.
3. Install new battery into the compartment.  
Remove the old battery and install new one (CR2032). Ensure that the side with a “+” is facing up.
4. Put the cover back. Then use a coin to turn the battery cover clockwise to lock it in place.



### CAUTION:

To ensure safe operation, please observe the following precautions:

- Use CR2032 type battery.
- Avoid contact with water or liquid.
- Do not expose the remote control to moisture or heat.
- Do not drop the remote control.
- If the battery has leaked in the remote control, carefully wipe the case clean and install new battery.
- Risk of an explosion if battery is replaced by an incorrect type.
- Dispose of used battery according to the instructions.

Warning: Do not ingest battery, Chemical Burn Hazard.



- This product contains a coin / button cell battery. If the coin / button cell battery is swallowed, it can cause severe internal burns in just 2 hours and can lead to death.

Warning: Keep new and used batteries away from children.



- If the battery compartment does not close securely, stop using the product and keep it away from children. If you think batteries might have been swallowed or placed inside any part of the body, seek immediate medical attention.

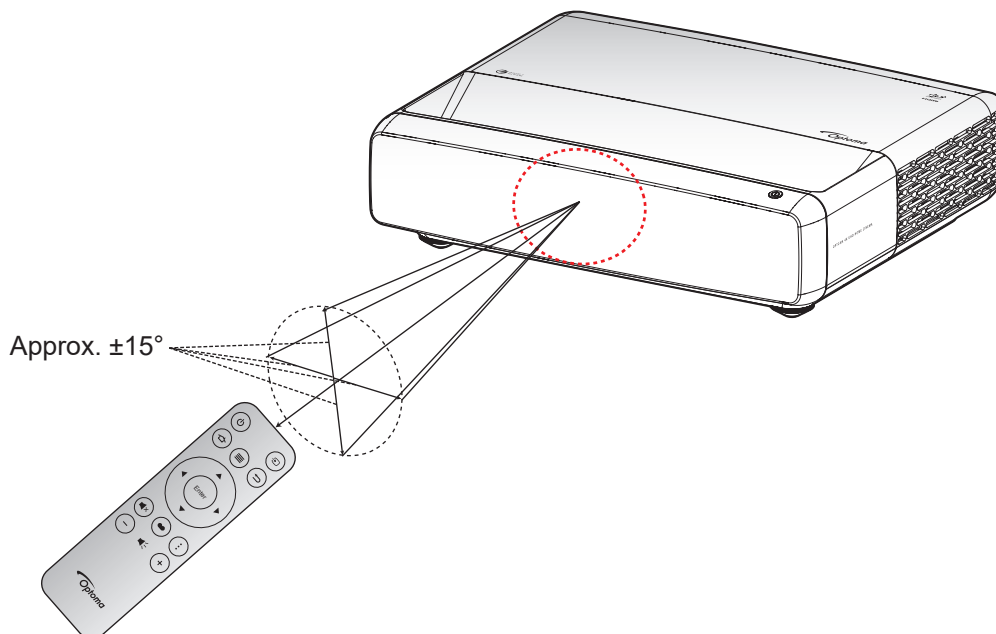
# SETUP AND INSTALLATION

## Effective range

Infra-Red (IR) remote control sensor is located on top of the projector. Ensure to hold the remote control at an angle within 30° perpendicular to the projector's IR remote control sensors to function correctly. The distance between the remote control and the sensor should not be longer than 4 meters (~13 feet).

**Note:** When pointing the remote control directly (0 degrees angle) on the IR sensor, the distance between the remote control and the sensor should not be longer than 6 meters (~19 feet).

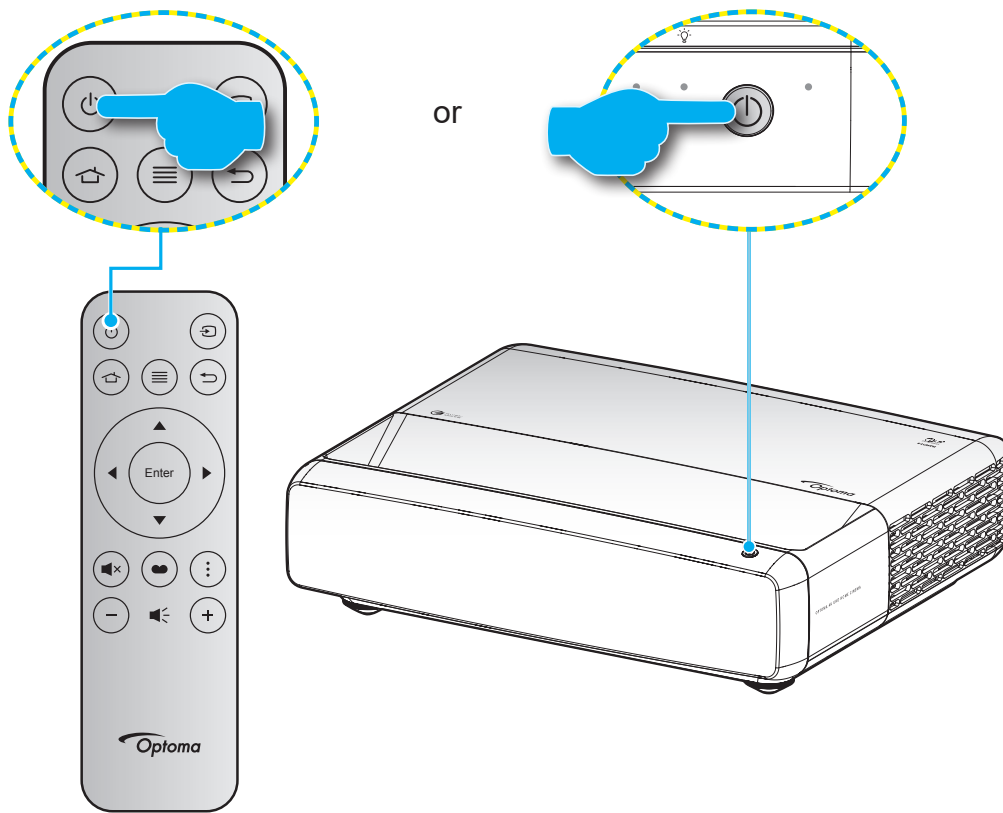
- Make sure that there are no obstacles between the remote control and the IR sensor on the projector that might obstruct the infra-red beam.
- Please ensure that the IR transmitter of the remote control is not being shined on directly by sunlight or fluorescent lamps.
- Please keep the remote control more than 2 meters away from fluorescent lamps in order to avoid possible malfunction. If the remote is exposed to inverter-type fluorescent lamps it may become intermittently ineffective.
- Please be aware that if used within too close proximity of the projector, the remote control may become ineffective.





# USING THE PROJECTOR

## Powering on / off the projector



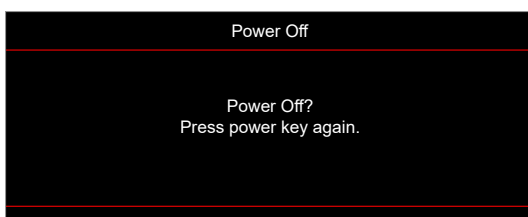
## Powering on

1. Securely connect the power lead and signal/source cable. When connected, the On/Standby LED will turn red.
2. Turn on the projector by pressing the “⏻” button on the projector keypad or the remote control.
3. A start up screen will display in approximately 1 second and the On/Standby LED will be flashing white.

**Note:** *The first time the projector is turned on, you will be prompted to select the preferred language, projection orientation, and other settings.*

## Powering off

1. Turn off the projector by pressing the “⏻” button on the projector keypad or the remote control.
2. The following message will be displayed:



# USING THE PROJECTOR

3. Press the “⏻” button again to confirm, otherwise the message will disappear after 15 seconds. When you press the “⏻” button for the second time, the projector will shut down.
4. The cooling fans will continue to operate for about 1 second. When the On/Standby LED turns solid red, this indicates the projector has entered standby mode. If you wish to turn the projector back on, simply press the “⏻” button.
5. Disconnect the power lead from the electrical outlet and the projector.

## Selecting an input source

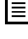

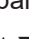

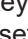

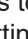


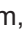

Turn on the connected source that you want to display on the screen, such as computer, notebook, video player, etc. The projector will automatically detect the source. If multiple sources are connected, press the “⌂” button on the remote control to select the desired input.

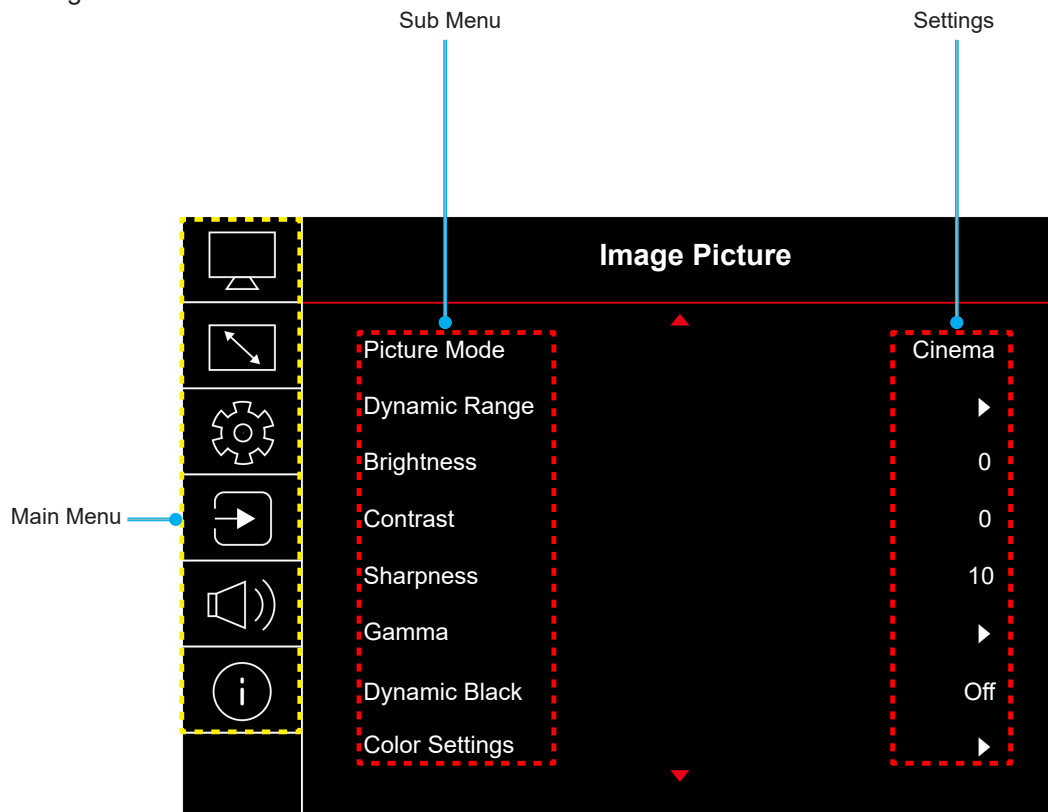


# USING THE PROJECTOR

## Menu navigation and features

The projector has multilingual on-screen display menus that allow you to make image adjustments and change a variety of settings. The projector will automatically detect the source.

1. To open the OSD menu, press  on the remote control.
2. When OSD is displayed, use   keys to select any item in the main menu. While making a selection on a particular page, press  on the remote control or the projector keypad to enter sub menu.
3. Use   keys to select the desired item in the sub menu and then press  to view further settings. Adjust the settings by using   keys.
4. Select the next item to be adjusted in the sub menu and adjust as described above.
5. Press  to confirm, and the screen will return to the main menu.
6. To exit, press  again. The OSD menu will close and the projector will automatically save the new settings.



# USING THE PROJECTOR

## OSD Menu tree

**Note:** The OSD menu tree items and features are subject to models and region. Optoma reserve the right to add or remove items to improve product performance without notice.

Main Menu	Sub Menu	Sub Menu 2	Sub Menu 3	Sub Menu 4	Values		
Image	Picture Mode				Vivid		
					HDR		
					HLG		
					HDR SIM.		
					Cinema		
					Game		
					Reference		
					Bright		
					3D		
				Reset			
	Dynamic Range	HDR / HLG				Auto	
						Off	
		HDR Brightness				0 ~ 10	
	Brightness					-50 ~ 50	
	Contrast					-50 ~ 50	
	Sharpness					1 ~ 15	
	Gamma					Film	
						Video	
						Graphics	
						1.8	
						2.0	
						2.2	
						2.4	
	Dynamic Black					3D	
						Off	
						On	
	Color Settings	Color	Color			-50 ~ 50	
			Tint			-50 ~ 50	
		Color Temperature					Warm
							Standard
							Cool
							Cold
		CMS / Colour Adjustment	Color	Color			White / Red / Green / Blue / Cyan / Magenta / Yellow
				Hue			-50 ~ 50
				Saturation			-50 ~ 50
				Value (Luminance)			-50 ~ 50
Reset						No	
				Yes			
Color Space				HDMI Input: Auto / RGB(0~255) / RGB(16~235) / YUV			

# USING THE PROJECTOR

Main Menu	Sub Menu	Sub Menu 2	Sub Menu 3	Sub Menu 4	Values		
Image	Wall Color				Off		
					Blackboard		
					Light Yellow		
					Light Green		
					Light Blue		
					Pink		
					Grey		
	3D	3D Mode				Off	
						On	
		3D Sync Type				DLP-Link	
						3D Sync	
		3D Format				Auto	
						SBS (Side by Side)	
						Top and Bottom	
		3D Sync Invert				Frame Sequential	
						Off	
		Reset				On	
				No			
				Yes			
Reset							
Display	Focus				Press the “◀” or “▶” button on the remote control to adjust focus.		
	Geometric Correction	V Keystone				-10 ~ 10	
		H Keystone				-10 ~ 10	
		Four Corner Adjustment					
		Warping					
		Reset					
	Digital Zoom	Zoom				-5 ~ 25	
	Gaming Mode					Off	
						On	
	Advanced Gaming	Smooth Motion				Off	
						On	
		Display FPS					Off
							White/Red/Green
		Target Master					Off
					White/Red/Green		

# USING THE PROJECTOR

Main Menu	Sub Menu	Sub Menu 2	Sub Menu 3	Sub Menu 4	Values	
Display	Aspect Ratio				4:3	
					16:9	
					V-Stretch	
					Full Screen	
					21:9	
					32:9	
					Native	
	Light Source Mode				Auto	Bright
						Eco
Reset						
Setup	Test Pattern				Green Grid	
					Magenta Grid	
					White Grid	
					White	
					Off	
	Projection Orientation				Front	
					Rear	
					Ceiling-Top	
					Rear-Top	
	Language				English	
					Deutsch	
					Français	
					Italiano	
					Español	
					Português	
					繁體中文	
					簡體中文	
					日本語	
					한국어	
				Русский		
	Menu Settings	Menu Location				Top left
						Top right
						Center
						Bottom left
						Bottom right
		Menu Timer				Off
						5s
					10s	
					20s	
Information Hide					30s	
					Off	
High Altitude				On		
				Off		

# USING THE PROJECTOR

Main Menu	Sub Menu	Sub Menu 2	Sub Menu 3	Sub Menu 4	Values	
Setup	Power Settings	Direct Power On			Off	
					On	
		Signal Power On			Off	
					On	
		Auto Power Off (min.)			0, 2 ~ 180 (1 min increments)	
		Sleep Timer (min.)			0 ~ 990 (30 min increments)	
	Security	Security			Off	
					On	
		Security Timer	Month			
			Day			
	Hour					
		Change Password				
	Eye Protection Sensor				Off	
					On	
	Startup Logo	Logo			Default	
					Neutral	
	Background Color				None	
					Blue	
					Red	
					Green	
				Grey		
				Logo		
Device Reset	Reset OSD			No		
				Yes		
	Reset All Settings			No		
				Yes		
Input	Auto Source			Off		
				On		
	Remember Last Source			Off		
				On		
	Auto Input Switch			Off		
				On		
	HDMI CEC Settings	HDMI Link			Off	
					On	
		Inclusive of TV			No	
					Yes	
		Power On Link			Mutual	
					PJ → Device	
	Power Off Link			Device → PJ		
				Off		
Reset				On		
				No		
				Yes		

# USING THE PROJECTOR

Main Menu	Sub Menu	Sub Menu 2	Sub Menu 3	Sub Menu 4	Values
Audio	Volume				0 ~ 10
	Mute				Off
					On
	Audio Mode				Auto
					Standard
					Movie
					Game
	Audio Output				Internal Speaker
				SPDIF	
Reset					
Information	Regulatory				
	Serial Number				
	Source Info.				Source, Resolution, Refresh Rate
	Color Info				Color Bit Depth
					Color Gamut
					Color Space
	Light Source Hours				
	Light Source Mode				Bright
					Eco
	FW Version				DDP
				MCU	
				MST	



# USING THE PROJECTOR

## Image menu

### Image picture mode menu

There are several predefined display modes that you can choose from to suit your viewing preference. Each mode has been fine-tuned by our expert colour team to ensure superior colour performance for wide range of content.

- **Vivid:** In this mode, the color saturation and brightness are well-balanced. Choose this mode for playing games.
- **HDR / HLG:** Decodes and displays High Dynamic Range (HDR) / Hybrid Log Gamma (HLG) content for the deepest blacks, brightest whites, and vivid cinematic color using REC.2020 color gamut. This mode will be automatically enabled if HDR/HLG is set to Auto (and HDR/HLG Content is sent to projector – 4K UHD Blu-ray, 1080p/4K UHD HDR/HLG Games, 4K UHD Streaming Video). While HDR/HLG mode is active, other display modes (Cinema, Reference, etc.) cannot be selected as HDR/HLG delivers color that is highly accurate, exceeding the color performance of the other display modes.
- **HDR SIM.:** Enhances non-HDR content with simulated High Dynamic Range (HDR). Choose this mode to enhance gamma, contrast, and color saturation for non-HDR content (720p and 1080p Broadcast/Cable TV, 1080p Blu-ray, non-HDR Games, etc).  
**Note:** *This mode can ONLY be used with non-HDR content.*
- **Cinema:** Provides the best balance of detail and colors for watching movies.
- **Game:** Optimises your projector for maximum contrast and vivid colors allowing you to see shadow detail when playing video games.
- **Reference:** This mode reproduces colors as close as possible the image the way the movie director intended. Color, color temperature, brightness, contrast and gamma settings are all configured to Rec.709 color gamut. Select this mode for the most accurate colour reproduction when watching movies.
- **Bright:** This mode is suitable for environments where extra-high brightness is required, such as using the projector in well-lit rooms.
- **3D:** Optimized settings for watching 3D content.  
**Note:** *To experience the 3D effect, you will need to have compatible DLP Link 3D glasses. See 3D section for more information.*
- **Reset:** Return the factory default settings for picture mode settings.

### Image dynamic range menu

#### HDR / HLG

Configure the High Dynamic Range (HDR) / Hybrid Log Gamma(HLG) setting and its effect when displaying video from 4K Blu-ray players and streaming devices.

- **Auto:** Auto detect HDR/HLG signal.
- **Off:** Turn off HDR/HLG Processing. When set to Off, the projector will NOT decode HDR/HLG content.

#### HDR Brightness

Adjust the brightness level of HDR.

### Image brightness menu

Adjust the brightness of the image.

# USING THE PROJECTOR

## Image contrast menu

The contrast controls the degree of difference between the lightest and darkest parts of the picture.

## Image sharpness menu

Adjust the sharpness of the image.

## Image gamma menu

Set up gamma curve type. After the initial setup and fine tuning is completed, utilize the Gamma Adjustment steps to optimize your image output.

- **Film:** For home theater.
- **Video:** For video or TV source.
- **Graphics:** For PC / Photo source.
- **1.8 / 2.0 / 2.2 / 2.4:** For specific PC / Photo source.
- **3D:** To experience the 3D effect, you need to have 3D glasses. Make sure your PC/portable device has a 120 Hz signal output quad buffered graphics card and a 3D Player installed.  
**Note:** *In 3D mode, only "3D" option is available for Gamma.*

## Image dynamic black menu

Use to automatically adjust the picture brightness in order to give optimum contrast performance.

## Image color settings menu

### Color

Adjust a video image from black and white to fully saturated color.

### Tint

Adjust the color balance of red and green.

### Color Temperature

Select a color temperature from Warm, Standard, Cool, or Cold.

### CMS / Colour Adjustment

Select the following options:

- **Color:** Adjust the red, green, blue, cyan, yellow, magenta, and white level of the image.
- **Hue:** Adjust the color balance of red and green.
- **Saturation:** Adjust a video image from black and white to fully saturated color.
- **Value (Luminance):** Adjust the luminance of the selected color.
- **Reset:** Return the factory default settings for color adjustment.

### Color Space

Select an appropriate color matrix type from the following: Auto, RGB(0-255), RGB(16-235), and YUV.

# USING THE PROJECTOR

## Image wall color menu

Designed to adjust the colors of the projected image when projecting on to a wall without a screen. Each mode has been fine-tuned by our expert colour team to ensure superior color performance.

There are several predefined modes that you can choose from to suit the colour of your wall. Select between off, blackboard, light yellow, light green, light blue, pink, and grey.

**Note:** *For accurate color reproduction, we recommend using a screen.*

## Image 3D menu

### **Note:**

- *This projector is a 3D ready projector with DLP-Link 3D solution.*
- *Please make sure your 3D glasses are use for DLP-Link 3D before enjoy your video.*
- *This projector supports frame sequential (page-flip) 3D via HDMI1/HDMI2 ports.*
- *To enable 3D mode, the input frame rate should be set to 60Hz only, lower or higher frame rate is not supported.*
- *To reach the best performance, resolution 1920x1080 is recommended, please be noted that 4K (3840x2160) resolution is not supported in 3D mode.*

### **3D Mode**

Use this option to disable or enable the 3D function.

- **Off:** Select “Off” to turn off 3D mode.
- **On:** Select “On” to turn on 3D mode.

### **3D Sync Type**

Use this option to select 3D technology.

- **DLP-Link:** Select to use optimized settings for DLP 3D Glasses.
- **3D Sync:** Select to use optimized settings for IR, RF or polarized 3D Glasses.

### **3D Format**

Use this option to select the appropriate 3D format content.

- **Auto:** When a 3D identification signal is detected, the 3D format is selected automatically.
- **SBS:** Display 3D signal in “Side-by-Side” format.
- **Top and Bottom:** Display 3D signal in “Top and Bottom” format.
- **Frame Sequential:** Display 3D signal in “Frame Sequential” format.

### **3D Sync Invert**

Use this option to enable/disable the 3D sync invert function.

### **Reset**

Return the factory default setting for 3D settings.

- **No:** Select to cancel Reset.
- **Yes:** Select to return the factory default settings for 3D.

## Image reset menu

Return the factory default settings for image settings.

# USING THE PROJECTOR

## *Display menu*

### Display focus menu

Adjust the image focus. For more information, refer to “Focus” on page 22.

### Display geometric correction menu

#### V Keystone

Adjust image distortion vertically and make a squarer image. Vertical keystone is used to correct a keystone image shape in which the top and bottom are slanted to one of the sides. This is intended when for use with vertically on-axis applications.

#### H Keystone

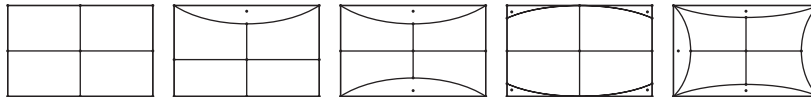
Adjust image distortion horizontally and make a squarer image. Horizontal keystone is used to correct a keystone image shape in which the left and right borders of the image are unequal in length. This is intended for use with vertically on-axis applications.

#### Four Corner Adjustment

This setting allows the projected image to be adjusted from each corner to make a square image when the projection surface is not level.

#### Warping

Use warping to adjust the image to align with the border of the projection surface (screen) or to eliminate image distortion (cause by an uneven surface).



#### Reset

Return the factory default setting for geometric correction settings.

### Display digital zoom menu

#### Zoom

Use to reduce or magnify an image on the projection screen. Digital Zoom is not the same as optical zoom and an result in degradation of image quality.

#### **Note:**

- *Zoom settings are retained on power cycle of the projector.*
- *Digital Zoom is not supported in 3D mode.*

# USING THE PROJECTOR

## Display gaming mode menu

Enable this feature to reduce response times (input latency) during gaming.

## Display advanced gaming menu

### Smooth Motion

Enable this feature to play the content with less motion artifacts, motion blur, and stuttered movement on the screen.

**Note:** Advanced gaming supports Variable Refresh Rate (VRR) from 48Hz to 144Hz @1080p.

### Display FPS

During Smooth Motion is enabled to display the FPS number on the screen in white, red, or green where the color reflects the current frame rate.

### Target Master

During Smooth Motion is enabled to display the Target Master on the screen for shooting games in white, red, or green.

## Display aspect ratio menu

Select the aspect ratio of the displayed image between the following options:

- **4:3:** This format is for 4:3 input sources.
- **16:9/ 21:9/32:9:** This format is for 16:9/ 21:9/32:9 input sources, like HDTV and DVD enhanced for Wide screen TV.
- **V-Stretch:** This mode stretches a 2.35:1/2.4:1 image vertically removing the black bars.
- **Full Screen:** Use this special 2.0:1 aspect ratio to display both 2.35:1/2.4:1 aspect ratio movies without black bars at the top and bottom of the screen.
- **Native:** This format displays the original image without any scaling.
- **Auto:** Automatically selects the appropriate display format.

### **Note:**

- *Detailed informations about V-Stretch mode:*
  - *Some Letter-Box Format DVDs are not enhanced for 16x9 TVs. In this situation, the image will not look right when displaying image in 16:9 mode. In this situation, please try to use the 4:3 mode to view the DVD. If the content is not 4:3, there will be black bars around the image in 16:9 display. For this type of content, you can use V-Stretch mode to fill the image on the 16:9 display*
  - *If you use an external anamorphic lens, this V-Stretch mode also allows you to watch a 2.35:1 content (include Anamorphic DVD and HDTV film source) that supports anamorphic wide is enhanced for 16x9 Display in a wide 2.35:1 image. In this case, there are no black bars. Light source power and vertical resolution are fully utilized*
- *To use the Full Screen format, do the following:*
  - a) *Set the screen aspect ratio to 2.0:1.*
  - b) *Select "Full Screen" format.*
  - c) *Align the projector image correctly on the screen.*

# USING THE PROJECTOR

## The Mapping rule for 4K UHD DMD:

16:9 screen	480i/p	576i/p	720p	1080i/p	2160p
4x3	Scale to 2880x2160.				
16x9	Scale to 3840x2160.				
21x9	Scale to 3840x1644.				
32x9	Scale to 3840x1080.				
V-stretch	Get the central 3840x1620 image, and then scale it to 3840x2160 for display.				
Full screen	Scale to 5068x2852 (132% Enlarge), then get the central 3840x2160 image for display.				
Auto	If source is 4:3, auto resize to 2880x2160.				

## Auto mapping rule:

	Input resolution		Auto/Scale	
	H-resolution	V-resolution	3840	2160
4:3	800	600	2880	2160
	1024	768	2880	2160
	1280	1024	2880	2160
	1400	1050	2880	2160
	1600	1200	2880	2160
Wide Laptop	1280	720	3840	2160
	1280	768	3600	2160
	1280	800	3456	2160
SDTV	720	576	2700	2160
	720	480	3240	2160
HDTV	1280	720	3840	2160
	1920	1080	3840	2160

## Display light source mode menu

Select a light source mode depending on the installation requirements.

## Display reset menu

Return the factory default settings for display settings.

# USING THE PROJECTOR

## *Setup menu*

### **Setup test pattern menu**

Select the test pattern from green grid, magenta grid, white grid, white, or disable this function (off).

### **Setup projection orientation menu**

Select the preferred projection between front, rear, ceiling-top, and rear-top.

### **Setup language menu**

Select the multilingual OSD menu between English, German, French, Italian, Spanish, Portuguese, Traditional Chinese, Japanese, Korean, and Russian.

### **Setup menu settings menu**

#### **Menu Location**

Select the menu location on the display screen.

#### **Menu Timer**

Set the duration where the OSD menu stays visible on the screen.

#### **Information Hide**

Enable this function to hide the information message.

### **Setup high altitude menu**

When “On” is selected, the fans will spin faster. This feature is useful in high altitude areas where the air is thin.

### **Setup power settings menu**

#### **Direct Power On**

Choose “On” to activate Direct Power mode. The projector will automatically power on when AC power is supplied, without pressing the “Power” key on the projector keypad or on the remote control.

#### **Signal Power On**

Choose “On” to activate Signal Power mode. The projector will automatically power on when a signal is detected, without pressing the “Power” key on the projector Keypad or on the remote control.

#### **Note:**

- *If the “Signal Power On” option is turned “On”, the power consumption of the projector in standby mode will be over 3W.*
- *This function is applicable with HDMI source.*

#### **Auto Power Off (min.)**

Sets the countdown timer interval. The countdown timer will start, when there is no signal being sent to the projector. The projector will automatically power off when the countdown has finished (in minutes).

#### **Sleep Timer (min.)**

Sets the countdown timer interval. The countdown timer will start, with or without a signal being sent to the projector. The projector will automatically power off when the countdown has finished (in minutes).

# USING THE PROJECTOR

**Note:** *The Sleep Timer is reset every time when the projector is powered off.*

## Setup security menu

### Security

Enable this function to prompt for a password before using the projector.

- **On:** Choose “On” to use security verification when the turning on the projector.
- **Off:** Choose “Off” to be able to switch on the projector without password verification.

**Note:** *The default password is 1234.*

### Security Timer

Can be select the time (Month/Day/Hour) function to set the number of hours the projector can be used. Once this time has elapsed you will be requested to enter your password again.

### Change Password

Use to set or modify the password that is prompted when turning the projector on.

## Setup eye protection sensor menu

Enable eye protection sensor to temporarily switch off the lights when objects are too close to the projector beam.

## Setup startup logo menu

Use this function to set the desired startup screen. If changes are made, they will take effect the next time the projector is powered on.

- **Default:** The default startup screen.
- **Neutral:** Logo is not displayed on startup screen.

## Setup background color menu

Use this function to display a blue, red, green, grey color, none, or logo screen when no signal is available.

**Note:** *If the background color is set to “None”, then the background color is black.*

## Setup device reset menu

### Reset OSD

Return the factory default settings for OSD menu settings.

### Reset All Settings

Return the factory default settings for all settings.



# USING THE PROJECTOR

## Input menu

### Input auto source menu

Choose this option to let the projector automatically find an available input source.

### Input remember last source menu

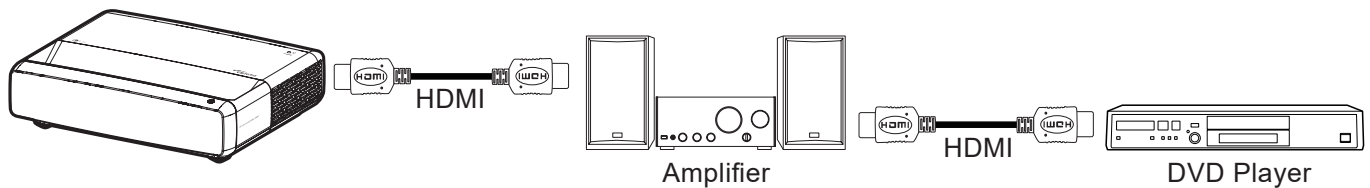
Choose this option to always start the projector with the last input source.

### Input auto input switch menu

When HDMI input signal is detected, the projector will automatically switch the input source.

### Input HDMI CEC settings menu

**Note:** When you connect HDMI CEC-compatible devices to the projector with HDMI cables, you can control them on the same power on or power off status using the HDMI Link control feature in the projector's OSD. This lets one device or multiple devices in a group power on or power off via HDMI Link Feature in a typical configuration, your DVD player may be connected to the projector through an amplifier or home theater system.



#### HDMI Link

Enable/disable the HDMI Link function.

#### Inclusive of TV

If the settings is set to "Yes" then the power on and power off link options are available.

#### Power On Link

CEC power on command.

- **Mutual:** Both projector and CEC device will be turned on simultaneously.
- **PJ → Device:** The CEC device will be turned on only after the projector is switched on.
- **Device → PJ:** The projector will be switched on only after the CEC device is turned on.

#### Power Off Link

Enable this function to let both HDMI Link and projector to be automatically turned off at the same time.

## Input reset menu

Return the factory default settings for input settings.

# USING THE PROJECTOR

## *Audio menu*

### **Audio volume menu**

Adjust the volume level.

### **Audio mute menu**

Use this option to temporarily turn off the sound.

- **On:** Choose “On” to turn mute on.
- **Off:** Choose “Off” to turn mute off.

**Note:** “Mute” function affects both internal and external speaker volume.

### **Audio audio mode menu**

Select the appropriate audio mode from standard, movie, game, or allow the projector to detect the audio mode automatically.

### **Audio audio output menu**

Select the appropriate audio output from internal speaker or SPDIF.

### **Audio reset menu**

Return the factory default settings for audio settings.

## *Information menu*

### **Information menu**

View the projector information as listed below:

- Regulatory
- Serial Number
- Source Info.
- Color Info.
- Light Source Hours
- Light Source Mode
- FW Version

# ADDITIONAL INFORMATION

## Compatible resolutions

### *Timing table with smooth motion enabled*

Modes	Resolution	V. Frequency [Hz]
<b>(1) HDMI - PC Signal</b>		
VGA	640 x 480	67
VGA	640 x 480	60
VGA	640 x 480	72
VGA	640 x 480	75
VGA	720 x 400	70
SVGA	800 x 600	56
SVGA	800 x 600	60
SVGA	800 x 600	72
SVGA	800 x 600	75
XGA	1024 x 768	60
XGA	1024 x 768	70
XGA	1024 x 768	75
XGA	1024 x 768	120
SXGA	1280 x 1024	75
SXGA	1280 x 1024	60
UXGA	1600 x 1200	60
4K	3840 x 2160	60
<b>(2) HDMI - Extended Wide timing</b>		
WXGA	1280 x 720	60
WXGA	1280 x 720	120
WXGA	1280 x 800	60
WXGA	1280 x 800	120
<b>(3) HDMI - Video Signal</b>		
640 x 480p	640 x 480	60
480i	720 x 480	60
576i	720 x 576	50
480p	720 x 480	60
576p	720 x 576 (4:3)	50
480p	720 x 480	60
576p	720 x 576 (16:9)	50
720p	1280 x 720	60
720p	1280 x 720	50
1080i	1920 x 1080	60
1080i	1920 x 1080	50
1080p	1920 x 1080	24
1080p	1920 x 1080	60
1080p	1920 x 1080	50
1080p	1920 x 1080	120
1080p	1920 x 1080	144
1080p	3840 x 1080	60

# ADDITIONAL INFORMATION

Modes	Resolution	V. Frequency [Hz]
2160p	3840 x 2160	60
2160p	3840 x 2160	50
2160p	3840 x 2160	25
2160p	3840 x 2160	24
2160p	3840 x 2160	30
2160p	4096 x 2160	24
2160p	4096 x 2160	25
2160p	4096 x 2160	30
2160p	4096 x 2160	50
2160p	4096 x 2160	60

## *Timing table with smooth motion disabled*

Modes	Resolution	V. Frequency [Hz]
<b>(1) HDMI - PC Signal</b>		
VGA	640 x 480	67
VGA	640 x 480	60
VGA	640 x 480	72
VGA	640 x 480	75
VGA	720 x 400	70
SVGA	800 x 600	56
SVGA	800 x 600	60
SVGA	800 x 600	72
SVGA	800 x 600	75
XGA	1024 x 768	60
XGA	1024 x 768	70
XGA	1024 x 768	75
XGA	1024 x 768	120
SXGA	1280 x 1024	75
SXGA	1280 x 1024	60
UXGA	1600 x 1200	60
4K	3840 x 2160	60
<b>(2) HDMI - Extended Wide timing</b>		
WXGA	1280 x 720	60
WXGA	1280 x 720	120
WXGA	1280 x 800	60
WXGA	1280 x 800	120
<b>(3) HDMI - Video Signal</b>		
640x480p	640 x 480	60
576p	720 x 576 (16:9)	50
480p	720 x 480	60
720p	1280 x 720	60
720p	1280 x 720	50
1080i	1920 x 1080	60
1080i	1920 x 1080	50

# ADDITIONAL INFORMATION

Modes	Resolution	V. Frequency [Hz]
1080p	1920 x 1080	24
1080p	1920 x 1080	60
1080p	1920 x 1080	50
1080p	1920 x 1080	120
1080p	1920 x 1080	144
1080p	1920 x 1080	240
1080p	3840 x 1080	60
2160p	3840 x 2160	60
2160p	3840 x 2160	50
2160p	3840 x 2160	24
2160p	3840 x 2160	30
2160p	4096 x 2160	24
2160p	4096 x 2160	25
2160p	4096 x 2160	30
2160p	4096 x 2160	50
2160p	4096 x 2160	60
576p	720 x 576	50
720p	1280 x 720	60
720p	1280 x 720	50
1080i	1920 x 1080	60
1080i	1920 x 1080	50
1080p	1920 x 1080	24
1080p	1920 x 1080	60
1080p	1920 x 1080	50
1080p	1920 x 1080	120
1080p -144 (CVT-RB)	1920 x 1080	144
1080p	1920 x 1080	240
1080p	3840 x 1080	60
2160p	3840 x 2160	60
2160p	3840 x 2160	50
2160p	3840 x 2160	25
2160p	3840 x 2160	24
2160p	3840 x 2160	30
2160p	4096 x 2160	24
2160p	4096 x 2160	25
2160p	4096 x 2160	30
2160p	4096 x 2160	50
2160p	4096 x 2160	60

# ADDITIONAL INFORMATION

## *True 3D video compatibility*

Modes	Resolution	V. Frequency [Hz]
<b>(4) HDMI – 1.4a 3D Timing</b>		
720p50 (Frame Packing)	1280 x 720	50
720p60 (Frame Packing )	1280 x 720	60
1080p (Frame Packing )	1920 x 1080	24
720p50 (Top and Bottom )	1280 x 720	50
720p60 (Top and Bottom )	1280 x 720	60
1080p (Top and Bottom)	1920 x 1080	24
1080p (Top and Bottom)	1920 x 1080	50
1080p (Top and Bottom)	1920 x 1080	60
720p (Side by Side (Half))	1280 x 720	60
1080i (Side by Side (Half))	1920 x 1080	50(25)
1080i (Side by Side (Half))	1920 x 1080	60(30)
1080p (Side by Side (Half))	1920 x 1080	50
1080p (Side by Side (Half))	1920 x 1080	60

# ADDITIONAL INFORMATION

## Extended Display Identification Data (EDID) tables

Digital signal with VRR enabled (4K):

B0/Established Timing	B0/Standard Timing	B0/Detail Timing	B1/Video Mode	B1/Detail Timing
720 x 400 @ 70 (V) Hz x 31.5 (H) Hz	1280 x 720 @ 60Hz 16:9	3840 x 2160 @ 60Hz	640 x 480p @ 60Hz 4:3	1920 x 1080 @ 144Hz
640 x 480 @ 60 (V) Hz x 31.5 (H) Hz	1280 x 800 @ 60Hz 16:10		720(1440) x 576i @ 50Hz 4:3	3840 x 1080 @ 60Hz
640 x 480 @ 67 (V) Hz x 34.9 (H) Hz	1280 x 1024 @ 60Hz 5:4		720(1440) x 480i @ 60Hz 4:3	
640 x 480 @ 72 (V) Hz x 37.9 (H) Hz	1600 x 1200 @ 60Hz 4:3		720(1440) x 480i @ 60Hz 16:9	
640 x 480 @ 75 (V) Hz x 37.5 (H) Hz	1920 x 1200 @ 60Hz 16:10		720 x 576p @ 50Hz 4:3	
800 x 600 @ 56 (V) Hz x 35.1 (H) Hz	1024 x 768 @ 120Hz 4:3		720 x 576p @ 50Hz 16:9	
800 x 600 @ 60 (V) Hz x 37.9 (H) Hz	1280 x 720 @ 120Hz 16:9		720 x 480p @ 60Hz 4:3	
800 x 600 @ 72 (V) Hz x 48.1 (H) Hz	1280 x 800 @ 120Hz 16:9		720 x 480p @ 60Hz 16:9	
800 x 600 @ 75 (V) Hz x 46.9 (H) Hz			1280 x 720p @ 50Hz 16:9	
1024 x 768 @ 60 (V) Hz x 48.4 (H) Hz			1280 x 720p @ 60Hz 16:9	
1024 x 768 @ 70 (V) Hz x 56.5 (H) Hz			1920 x 1080i @ 60Hz 16:9	
1024 x 768 @ 75 (V) Hz x 60 (H) Hz			1920 x 1080i @ 50Hz 16:9	
1280 x 1024 @ 75 (V) Hz x 80 (H) Hz			1920 x 1080p @ 24Hz 16:9	
			1920 x 1080p @ 50Hz 16:9	
			1920 x 1080p @ 60Hz 16:9	
			3840 x 2160p @ 24Hz 16:9	
			3840 x 2160p @ 25Hz 16:9	
			3840 x 2160p @ 30Hz 16:9	
			3840 x 2160p @ 50Hz 16:9	
			3840 x 2160p @ 60Hz 16:9	
			4096 x 2160p @ 24Hz 256:135	
			4096 x 2160p @ 25Hz 256:135	
			4096 x 2160p @ 30Hz 256:135	
			4096 x 2160p @ 50Hz 256:135	
			4096 x 2160p @ 60Hz 256:135	
			1920 x 1080p @ 120Hz 16:9	

# ADDITIONAL INFORMATION

Digital signal for gaming (4K):

B0/Established Timing	B0/Standard Timing	B0/Detail Timing	B1/Video Mode	B1/Detail Timing
720 x 400 @ 70 (V) Hz x 31.5 (H) Hz	1280 x 720 @ 60Hz 16:9	3840 x 2160 @ 60Hz	640 x 480p @ 60Hz 4:3	1920 x 1080 @ 144Hz
640 x 480 @ 60 (V) Hz x 31.5 (H) Hz	1280 x 800 @ 60Hz 16:10		720 x 576p @ 50Hz 16:9	3840 x 1080 @ 60Hz
640 x 480 @ 67 (V) Hz x 34.9 (H) Hz	1280 x 1024 @ 60Hz 5:4		720 x 480p @ 60Hz 16:9	1920 x 1080 @ 240Hz
640 x 480 @ 72 (V) Hz x 37.9 (H) Hz	1600 x 1200 @ 60Hz 4:3		1280 x 720p @ 50Hz 16:9	
640 x 480 @ 75 (V) Hz x 37.5 (H) Hz	1920 x 1200 @ 60Hz 16:10		1280 x 720p @ 60Hz 16:9	
800 x 600 @ 56 (V) Hz x 35.1 (H) Hz	1024 x 768 @ 120Hz 4:3		1920 x 1080i @ 60Hz 16:9	
800 x 600 @ 60 (V) Hz x 37.9 (H) Hz	1280 x 720 @ 120Hz 16:9		1920 x 1080i @ 50Hz 16:9	
800 x 600 @ 72 (V) Hz x 48.1 (H) Hz	1280 x 800 @ 120Hz 16:9		1920 x 1080p @ 24Hz 16:9	
800 x 600 @ 75 (V) Hz x 46.9 (H) Hz			1920 x 1080p @ 50Hz 16:9	
1024 x 768 @ 60 (V) Hz x 48.4 (H) Hz			1920 x 1080p @ 60Hz 16:9	
1024 x 768 @ 70 (V) Hz x 56.5 (H) Hz			3840 x 2160p @ 24Hz 16:9	
1024 x 768 @ 75 (V) Hz x 60 (H) Hz			3840 x 2160p @ 30Hz 16:9	
1280 x 1024 @ 75 (V) Hz x 80 (H) Hz			3840 x 2160p @ 50Hz 16:9	
			3840 x 2160p @ 60Hz 16:9	
			4096 x 2160p @ 24Hz 256:135	
			4096 x 2160p @ 25Hz 256:135	
			4096 x 2160p @ 30Hz 256:135	
			4096 x 2160p @ 50Hz 256:135	
			4096 x 2160p @ 60Hz 256:135	
			1920 x 1080p @ 120Hz 16:9	

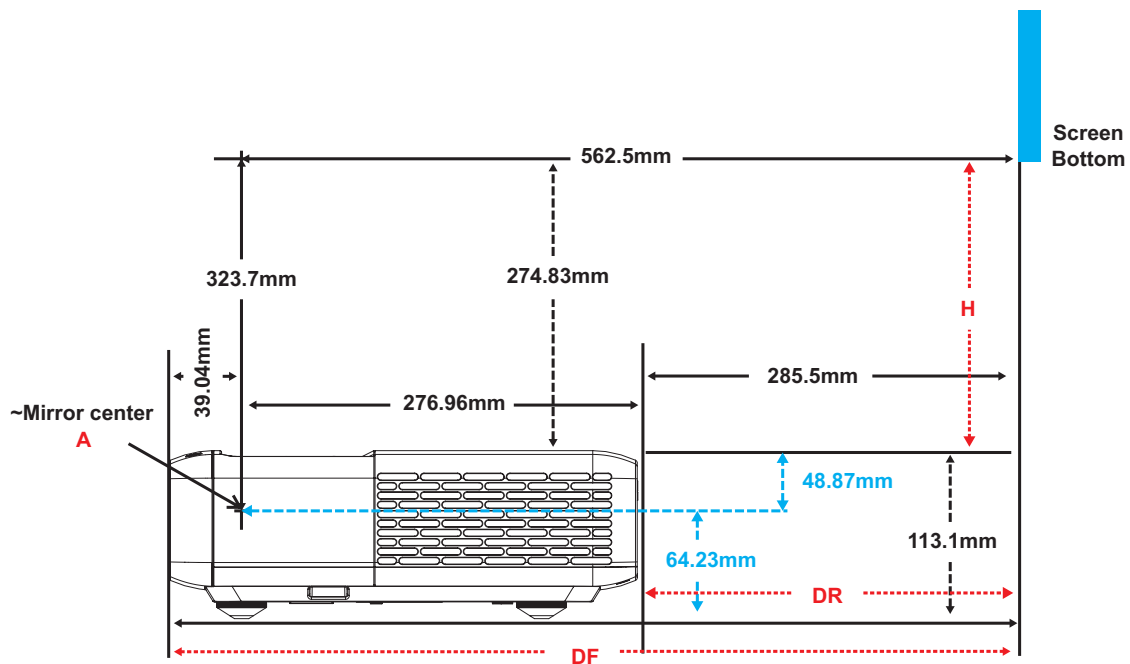


# ADDITIONAL INFORMATION

## Image size and projection distance

Image Size (inch)	DF Tolerance: 0~7%		DR		H Offset: 121% ~ 131%	
	m	inch	m	inch	m	inch
75"	0.479	18.867	0.163	6.427	0.147 ~ 0.241	5.798 ~ 9.475
85"	0.538	21.177	0.222	8.736	0.173 ~ 0.279	6.827 ~ 10.994
90"	0.567	22.332	0.251	9.891	0.186 ~ 0.299	7.342 ~ 11.754
100"	0.626	24.642	0.310	12.201	0.213 ~ 0.337	8.371 ~ 13.274
110"	0.685	26.951	0.369	14.510	0.239 ~ 0.425	9.401 ~ 16.718
120"	0.743	29.261	0.427	16.820	0.265 ~ 0.463	10.431 ~ 18.238

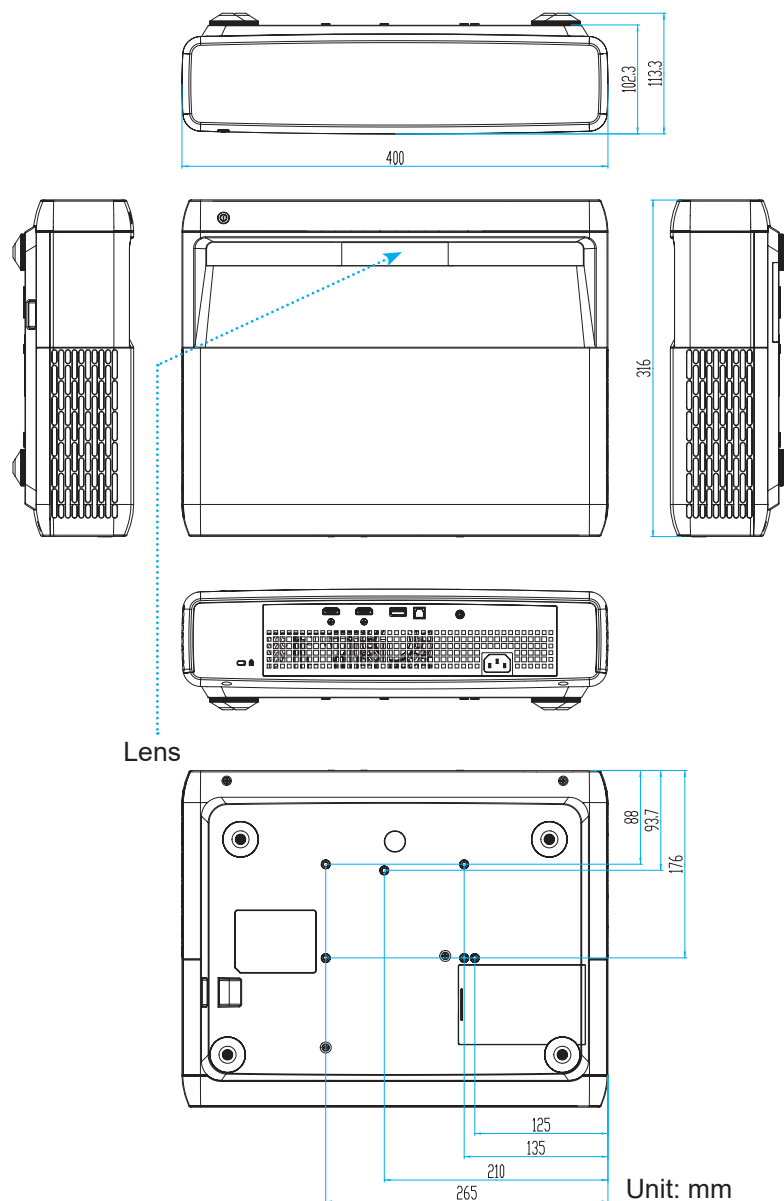
**Note:** All projectors have tolerance range. For the most accurate value, please measure the device directly.



# ADDITIONAL INFORMATION

## Projector dimensions and ceiling mount installation

1. To prevent damage to your projector, please use the Optoma ceiling mount.
2. If you wish to use a third party ceiling mount kit, please ensure the screws used to attach a mount to the projector meet the following specifications:
  - Screw type: M4 for six points mounting
  - Minimum screw length: 10mm



**Note:** Please note that damage resulting from incorrect installation will void the warranty.



Warning:

- If you buy a ceiling mount from another company, please be sure to use the correct screw size. Screw size will vary depending on the thickness of the mounting plate.
- Be sure to keep at least 10 cm gap between the ceiling and the bottom of the projector.
- Avoid installing the projector near a heat source.

# ADDITIONAL INFORMATION

## IR remote codes



Key	Key num	MTX.	Format	Data0	Data1	Data2	Data3	Description	
Power on / off		K12	04	F1	32	CD	71	8E	Refer to the "Powering on / off the projector" on page 20.
Source		K3	11	F1	32	CD	18	E7	Press  to select an input signal.
HDMI3		K13	03	F1	32	CD	92	6D	Press  to open the HDMI3 source.
Menu		K8	17	F1	32	CD	0E	F1	Press  to launch the on-screen display (OSD) menu. To exit OSD, press  again.
Return		K4	10	F1	32	CD	86	79	Press  to return to the previous page.
Up		K7	18	F2	32	CD	11	EE	Use     to select items or make adjustments to your selection.
Left		K14	02	F2	32	CD	10	EF	
Right		K5	09	F2	32	CD	12	ED	
Down		K2	19	F2	32	CD	14	EB	
Enter	Enter	K9	16	F1	32	CD	0F	F0	Confirm your item selection.
Mute		K15	01	F1	32	CD	52	AD	Press  to turn off/on the projector built-in speaker.
Picture Mode		K10	15	F1	32	CD	91	6E	Press  to display the Picture Mode menu. To exit the Picture Mode menu, press  again.
Focus Pattern		K6	08	F1	32	CD	25	DA	Press  to open Focus pattern.
Volume -	-	K11	12	F2	32	CD	0C	F3	Press - to decrease the volume.
Volume +	+	K1	05	F2	32	CD	09	F6	Press + to increase the volume.

# ADDITIONAL INFORMATION

## Troubleshooting

If you experience a problem with your projector, please refer to the following information. If a problem persists, please contact your local reseller or service center.

### Image problems

- ❓ *No image appears on-screen*
  - Ensure all the cables and power connections are correctly and securely connected as described in the "Setup and Installation" section.
  - Ensure the pins of connectors are not crooked or broken.
  - Ensure that the "Mute" feature is not turned on.
  
- ❓ *Image is out of focus*
  - Please refer to "Focus" on page 22.
  - Make sure the projection screen is between the required distance from the projector. (Please refer to page 49).
  
- ❓ *The image is stretched when displaying 16:9 DVD title*
  - When you play anamorphic DVD or 16:9 DVD, the projector will show the best image in 16: 9 format on projector side.
  - If you play the LBX format DVD title, please change the format as V-Stretch in projector OSD.
  - If you play 4:3 format DVD title, please change the format as 4:3 in projector OSD.
  - Please setup the display format as 16:9 (wide) aspect ratio type on your DVD player.
  
- ❓ *Image is too small or too large*
  - Move the projector closer to or further from the screen.
  - Press "Menu" on the projector panel, go to "Display-->Aspect Ratio". Try the different settings.
  
- ❓ *Image has slanted sides:*
  - If possible, reposition the projector so that it is centered on the screen and below the bottom of the screen.
  
- ❓ *Image is reversed*
  - Select "Setup-->Projection Orientation" from the OSD and adjust the projection direction.
  
- ❓ *Blurry double image*
  - Make sure "Picture Mode" is not 3D to avoid normal 2D image appear blurry double image.

# ADDITIONAL INFORMATION

## Other problems



*The projector stops responding to all controls*

- If possible, turn off the projector, then unplug the power cord and wait at least 20 seconds before reconnecting power.

## Remote control problems



*If the remote control does not work*

- Check the operating angle of the remote control is pointed within  $\pm 15^\circ$  to the IR receiver on the projector.
- Make sure there are not any obstructions between the remote control and the projector. Move to within 4 m (~13 ft) of the projector.
- Make sure batteries are inserted correctly.
- Replace batteries if they are exhausted.

## Warning indicators

When the warning indicators (see below) light up or flash, the projector will automatically shutdown:

- "LAMP" LED indicator is lit red and if "On/Standby" indicator flashes red.
- "TEMP" LED indicator is lit red and if "On/Standby" indicator flashes red. This indicates the projector has overheated. Under normal conditions, the project can be switched back on.
- "TEMP" LED indicator flashes red and if "On/Standby" indicator flashes red.

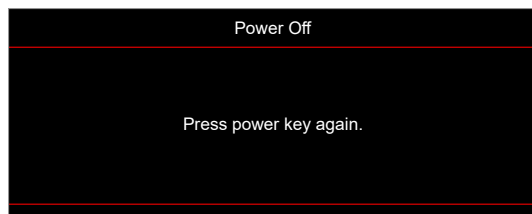
Unplug the power cord from the projector, wait for 30 seconds and try again. If the warning indicator light up or flash, please contact your nearest service center for assistance.

# ADDITIONAL INFORMATION

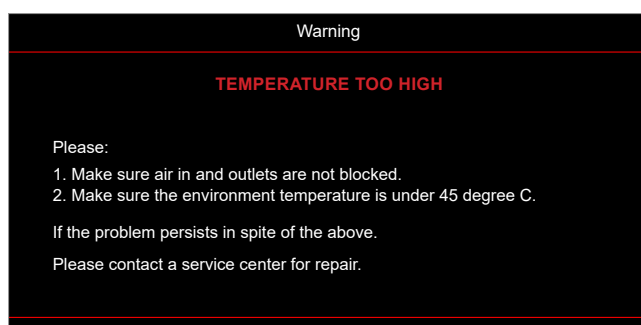
## LED lightning messages

Message	On/Standby LED		Temp LED	Lamp LED
	(Red)	(White)	(Red)	(Red)
Standby state (Input power cord)	Steady light			
Power on (Warming)		Flashing (0.5 sec off / 0.5 sec on)		
Power on and Lamp		Steady light		
Power off (Cooling)		Flashing (0.5 sec off / 0.5 sec on). Back to red steady light when cooling fan turns off.		
Quick resume (100ms)		Flashing (0.25 sec off / 0.25 sec on)		
Error (Lamp failure)	Flashing			Steady light
Error (Fan failure)	Flashing		Flashing	
Error (Over temp.)	Flashing		Steady light	

- Power off:



- Temperature warning:



# ADDITIONAL INFORMATION

## Specifications

Optical	Description
Technology	Texas Instrument DMD, 0.47" 4K UHD DMD x1 with 4-Way XPR actuator
Output resolution	4K UHD 3840 x 2160
Maximum input resolution	Graphic up to 3840 x 2160 @60Hz Maximum Bandwidth: <ul style="list-style-type: none"><li>HDMI 2.0: 600MHz</li></ul>
Lens	<ul style="list-style-type: none"><li>Throw ratio: 0.254</li><li>F-stop: 2.04</li><li>Focal length: 2.63mm</li></ul>
Offset	126% ±5%
Image size	75" ~ 120"
Projection distance	14.5cm ±2cm at 75" to 39.8cm ± 3cm at 120" (28.6cm ±2.5cm at 100")
I/Os	<ul style="list-style-type: none"><li>HDMI 2.0 x3 (outside x2 ; inside x1 for Android TV dongle)</li><li>USB x2 (outside x1, type-A connector for power delivery 5V/1.5A and service; inside x1, micro USB connector as a power supply 5V/1.5A for Android TV dongle)</li><li>Audio Out 3.5mm</li><li>S/PDIF</li></ul>
Colour	1073.4 Million color
Scan rate	<ul style="list-style-type: none"><li>Horizontal scan rate: 15 ~ 140 KHz</li><li>Vertical scan rate: 24 ~ 120Hz and 240Hz for 1080P</li></ul>
Speaker	10W x2
Power consumption	<ul style="list-style-type: none"><li>Maximum: (Bright mode)<ul style="list-style-type: none"><li>165W (typical), 190W(max) @110VAC</li><li>160W (typical), 184W(max) @220VAC</li></ul></li><li>Minimum: (ECO mode)<ul style="list-style-type: none"><li>145W (typical), 167W(max) @110VAC</li><li>143W (typical), 164W(max) @220VAC</li></ul></li></ul>
Power requirement	100~240V ±10%, AC 50/60Hz
Input current	2.2A
Installation orientations	Front, Rear, Ceiling-top, Rear-top
Dimensions (W x D x H)	<ul style="list-style-type: none"><li>Without feet: 400 x 316 x 102.3 mm (15.7 x 12.4 x 4.0 inches)</li><li>With feet: 400 x 316 x 113.3 mm (15.7 x 12.4 x 4.5 inches)</li></ul>
Weight	5.1 kg (11.24 lbs)
Environmental	Operating in 0~40°C, 10%~85% humidity (non-condensing)

**Note:** All specifications are subject to change without notice.




# ADDITIONAL INFORMATION

## Optoma global offices

For service or support, please contact your local office.




### USA

Optoma Technology, Inc.  
47697 Westinghouse Drive.  
Fremont, Ca 94539

 888-289-6786  
 510-897-8601  
 [services@optoma.com](mailto:services@optoma.com)




### Canada

Optoma Technology, Inc.  
47697 Westinghouse Drive.  
Fremont, Ca 94539

 888-289-6786  
 510-897-8601  
 [services@optoma.com](mailto:services@optoma.com)




### Latin America

Optoma Technology, Inc.  
47697 Westinghouse Drive.  
Fremont, Ca 94539

 888-289-6786  
 510-897-8601  
 [services@optoma.com](mailto:services@optoma.com)



### Europe

Unit 1, Network 41, Bourne End Mills  
Hemel Hempstead, Herts,  
HP1 2UJ, United Kingdom  
[www.optoma.eu](http://www.optoma.eu)  
Service Tel : +44 (0)1923 691865

 +44 (0) 1923 691 800  
 +44 (0) 1923 691 888  
 [service@tsc-europe.com](mailto:service@tsc-europe.com)




### Benelux BV

Randstad 22-123  
1316 BW Almere  
The Netherlands  
[www.optoma.nl](http://www.optoma.nl)

 +31 (0) 36 820 0252  
 +31 (0) 36 548 9052



### France

Bâtiment E  
81-83 avenue Edouard Vaillant  
92100 Boulogne Billancourt, France

 +33 1 41 46 12 20  
 +33 1 41 46 94 35  
 [savoptoma@optoma.fr](mailto:savoptoma@optoma.fr)




### Spain

C/ José Hierro, 36 Of. 1C  
28522 Rivas VaciaMadrid,  
Spain

 +34 91 499 06 06  
 +34 91 670 08 32




### Deutschland

Am Nordpark 3  
41069 Mönchengladbach  
Germany

 +49 (0) 2161 68643 0  
 +49 (0) 2161 68643 99  
 [info@optoma.de](mailto:info@optoma.de)

### Scandinavia

Lerpeveien 25  
3040 Drammen  
Norway

 +47 32 98 89 90  
 +47 32 98 89 99  
 [info@optoma.no](mailto:info@optoma.no)

PO.BOX 9515  
3038 Drammen  
Norway

### Korea

<https://www.optoma.com/kr/>

### Japan



<https://www.optoma.com/jp/>

### Taiwan

<https://www.optoma.com/tw/>

### China

Room 2001, 20F, Building 4,  
No.1398 Kaixuan Road,  
Changning District  
Shanghai, 200052, China

 +86-21-62947376  
 +86-21-62947375  
[www.optoma.com.cn](http://www.optoma.com.cn)

### Australia

<https://www.optoma.com/au/>



