



Easy start
with videos

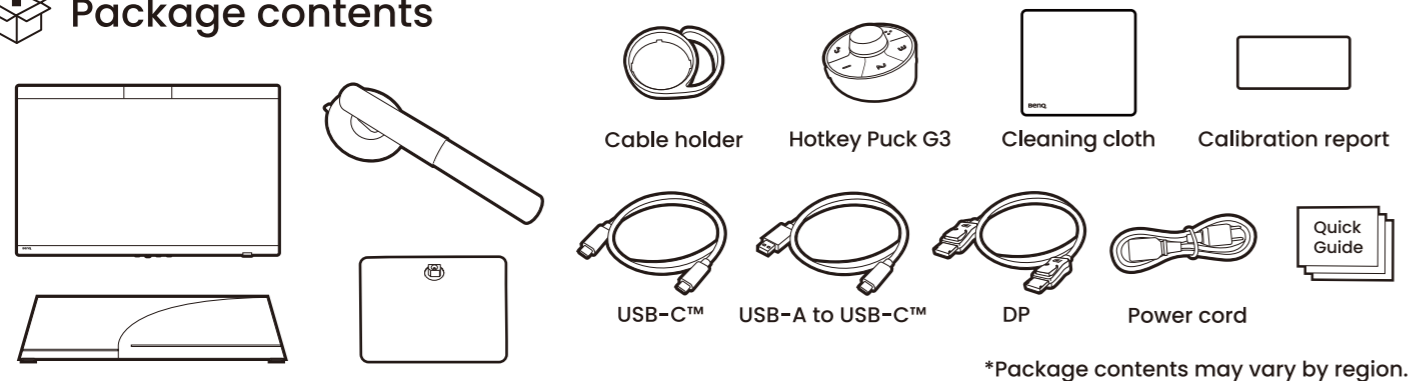
LCD Monitor Quick Start Guide

DesignVue Designer Monitor | PD Series

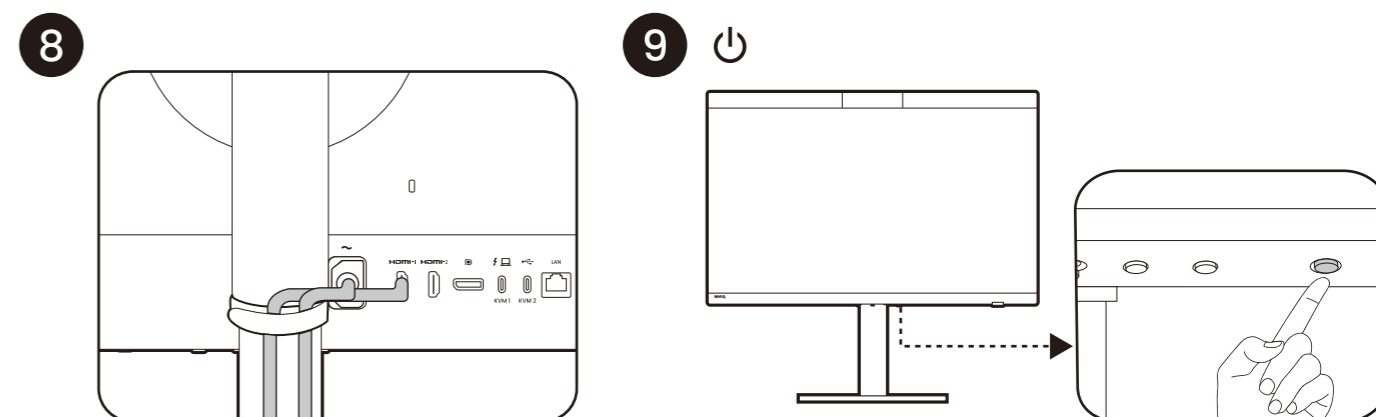
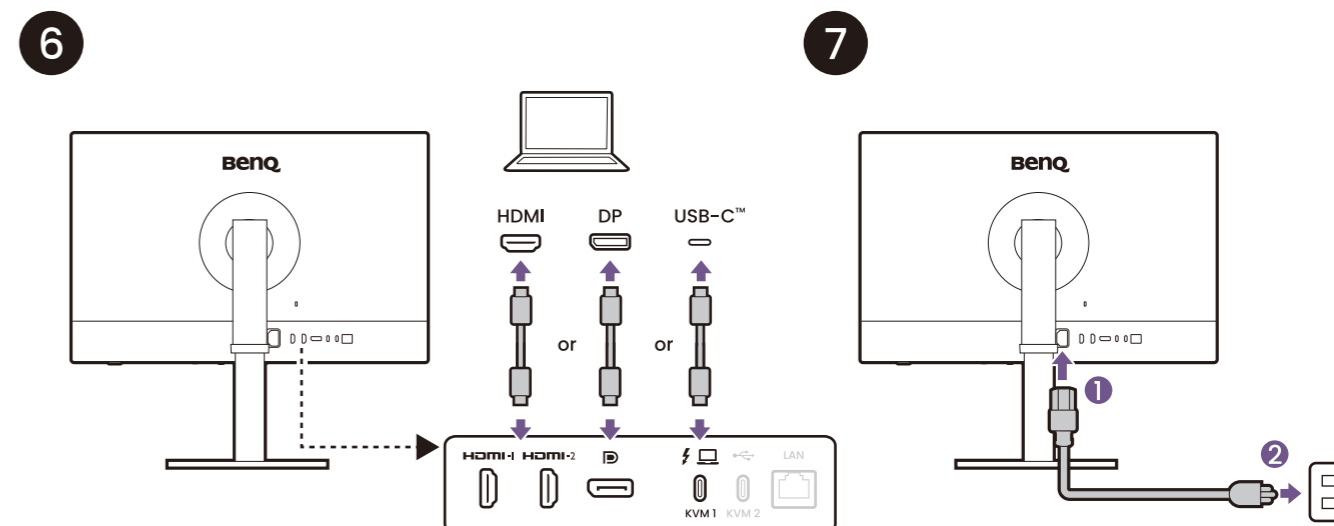
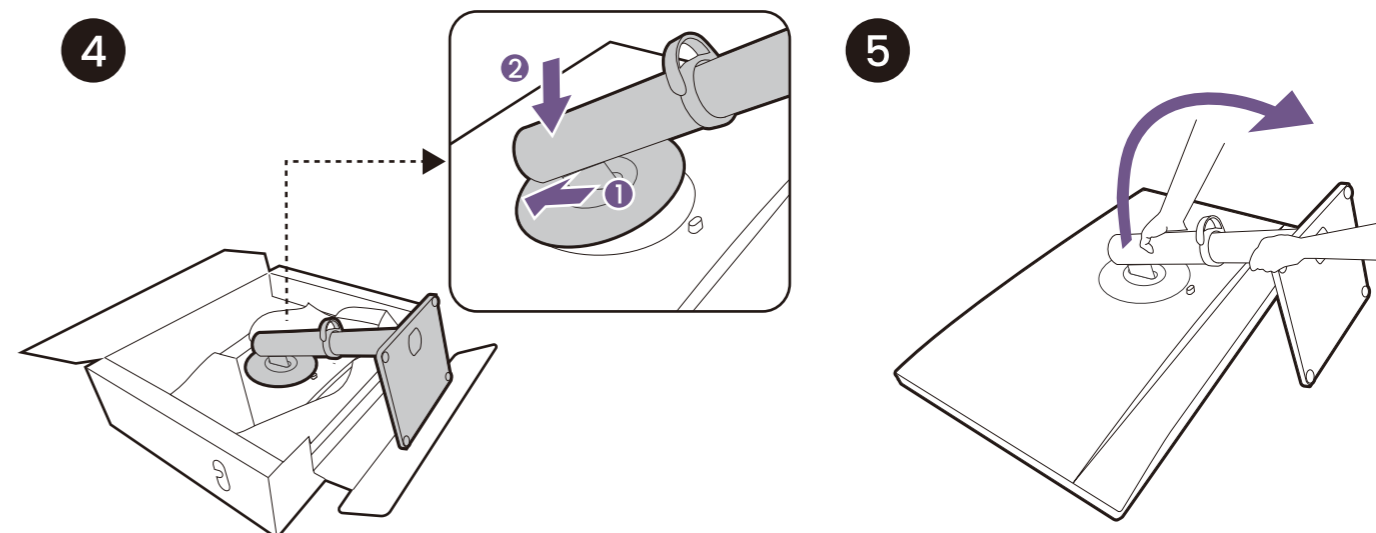
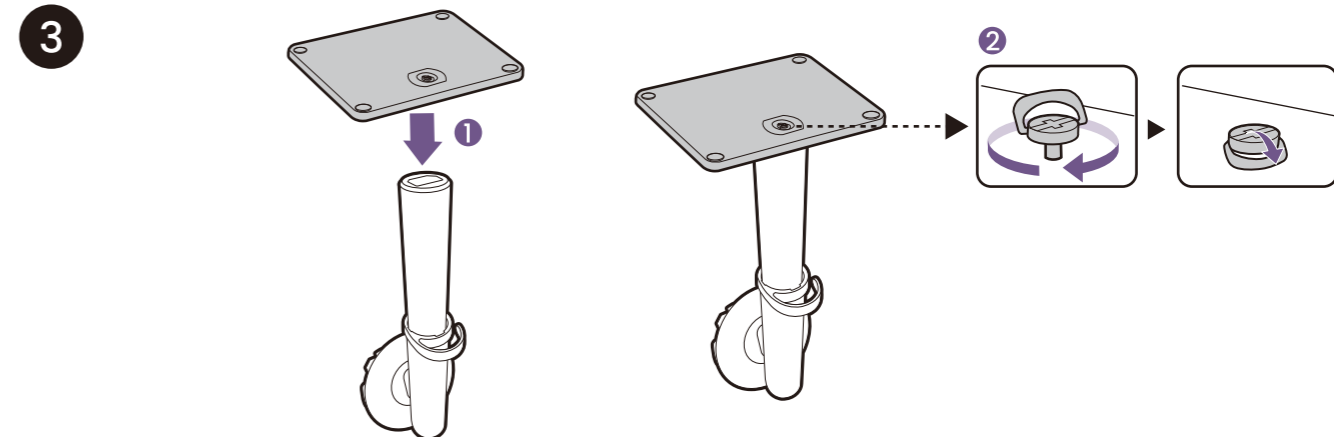
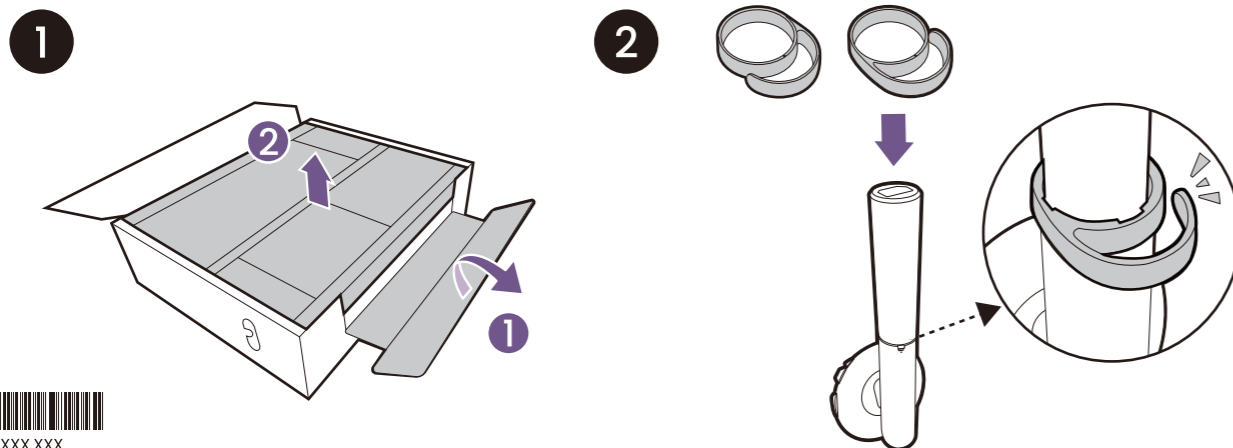
DN: PD2770U-EQ-V1

© 2025 BenQ Corporation. All rights reserved. Rights of modification reserved.

Package contents

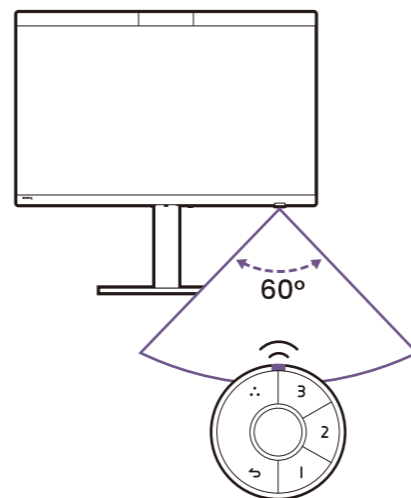
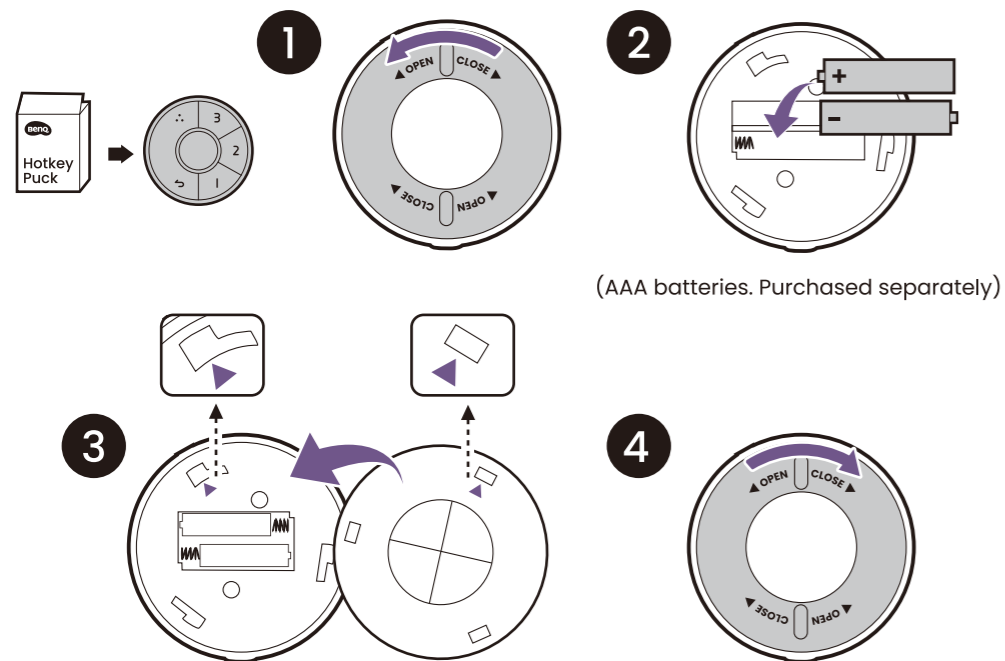


Setup





Working with Hotkey Puck G3



Color mode shortcuts

- 1 AdobeRGB
- 2 sRGB
- 3 Display P3

DesignVue Designer Monitor

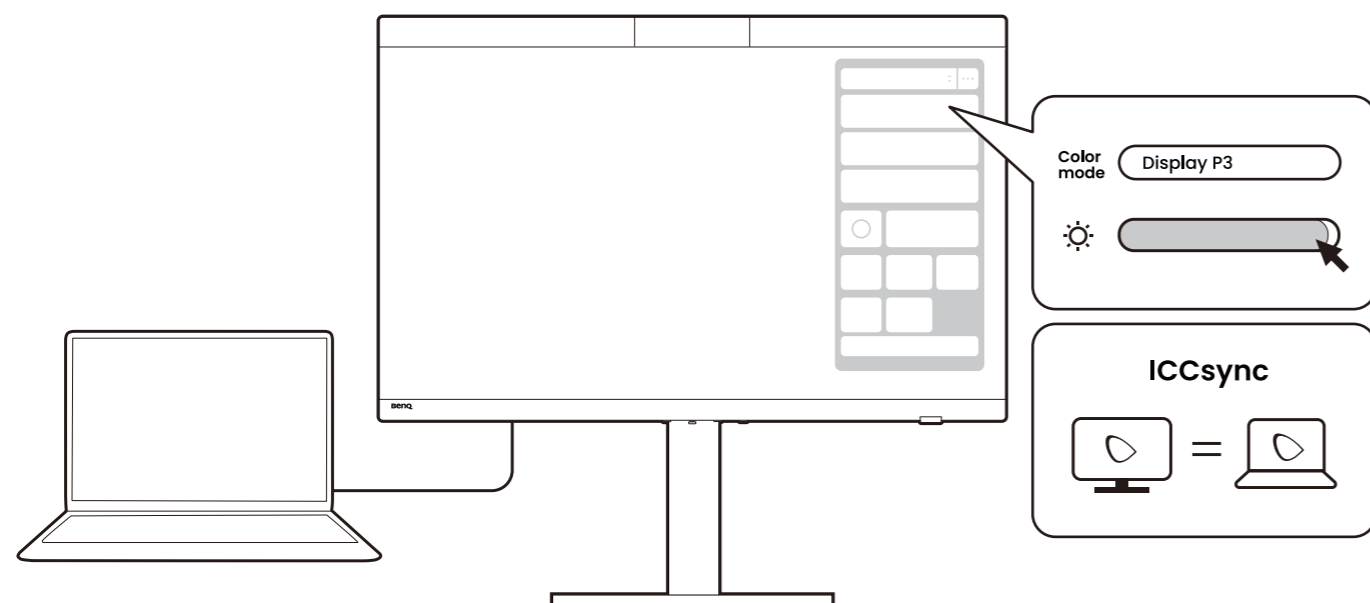
Display Pilot 2

Efficiently manage your display settings



Support.BenQ.com

Display Pilot 2



Installing color management software



Palette Master Ultimate

Exclusive calibration and convenient color management

Support.BenQ.com

Palette Master Ultimate



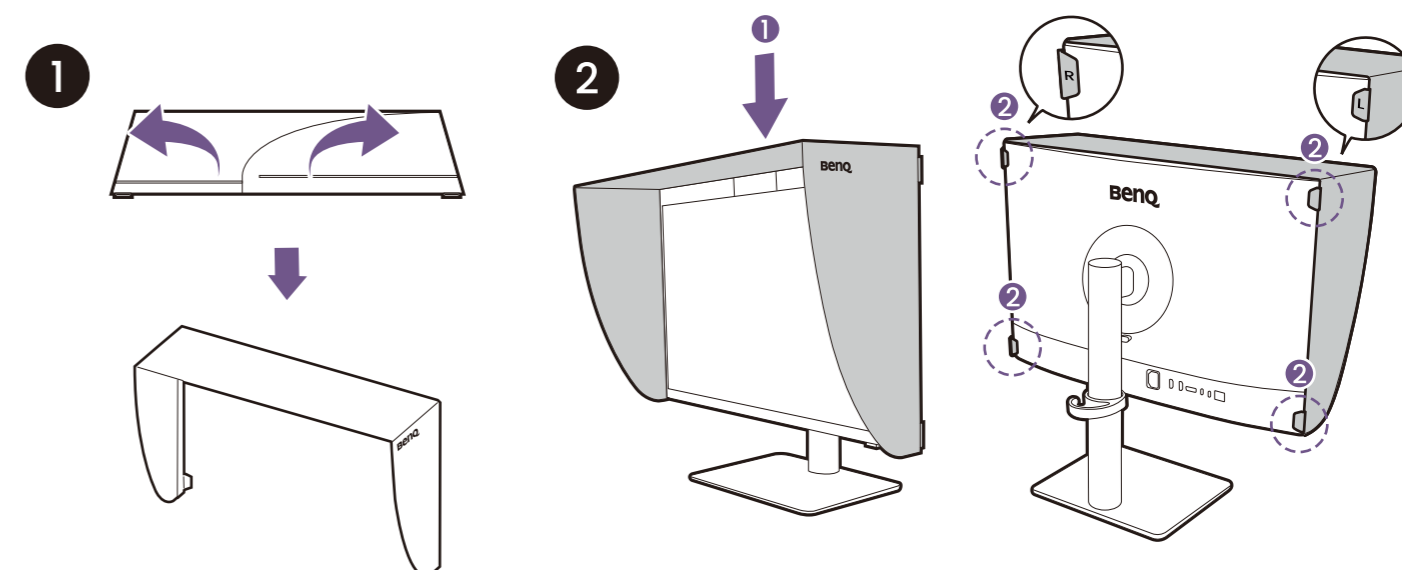
DMS Local

Remotely control and device management

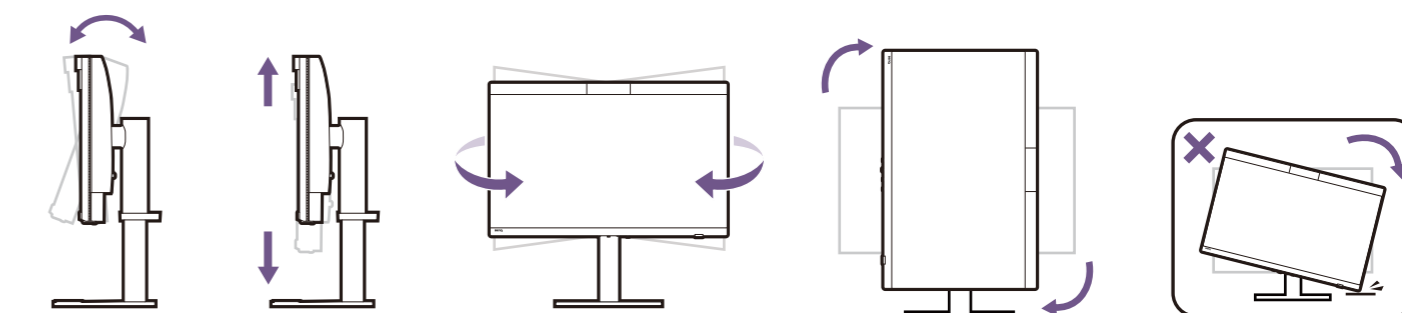
Support.BenQ.com

DMS Local

Installing the shading hood (optional step)

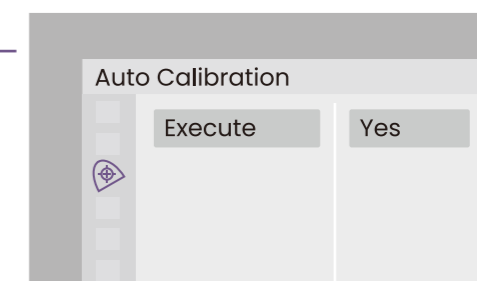
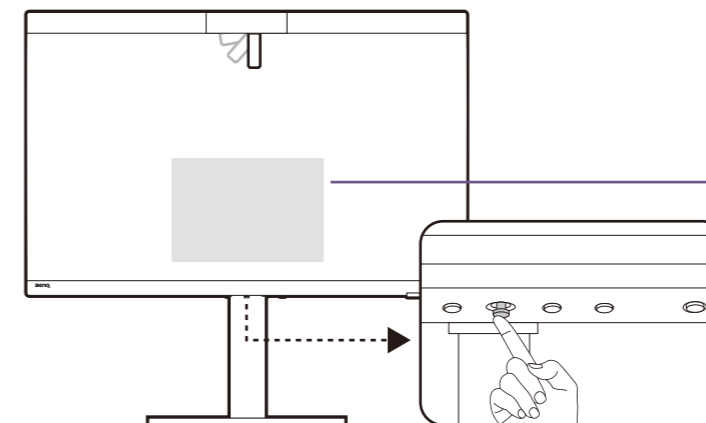


Angle adjustment



Always Accurate and Consistent Colors

Built-in Calibrator



The terms HDMI, HDMI High-Definition Multimedia Interface, HDMI Trade Dress and the HDMI Logos are trademarks or registered trademarks of HDMI Licensing Administrator, Inc.