



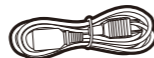
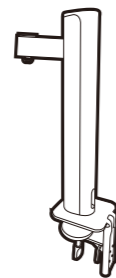
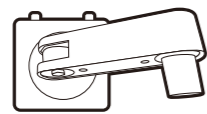
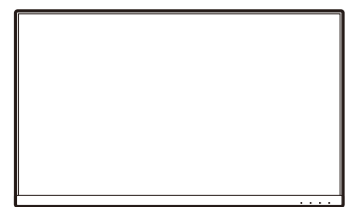
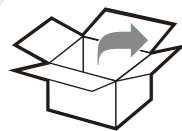
LCD Monitor Quick Start Guide

DesignVue Designer Monitor | PD Series



DN: PD06UA-EQ-V1

© 2024 BenQ Corporation. All rights reserved. Rights of modification reserved.



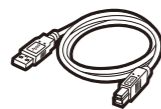
Hotkey Puck G2



HDMI



DP



USB



USB-C™



Quick Start Guide

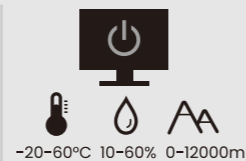
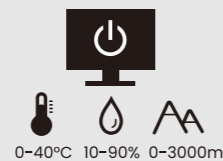


Regulatory Statements



Safety Instructions

The terms HDMI, HDMI High-Definition Multimedia Interface, HDMI Trade Dress and the HDMI logos are trademarks or registered trademarks of HDMI Licensing Administrator, Inc.

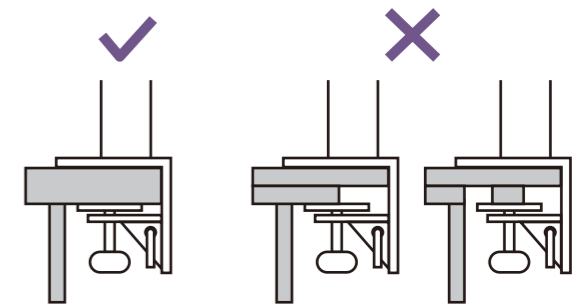
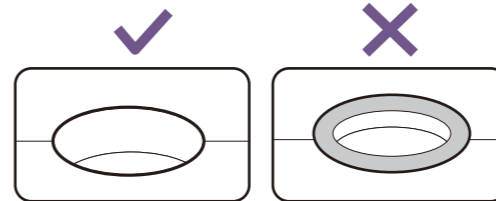


HIGH-DEFINITION MULTIMEDIA INTERFACE (For models with HDMI inputs)

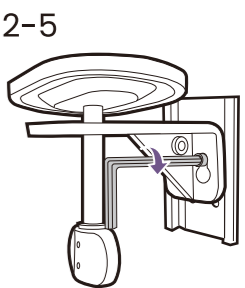
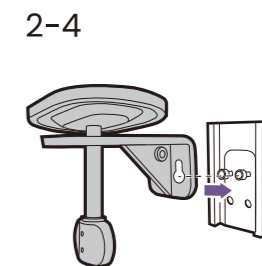
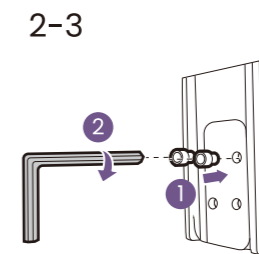
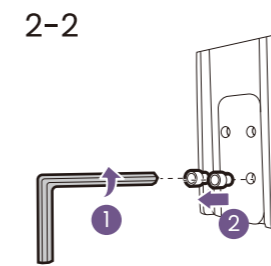
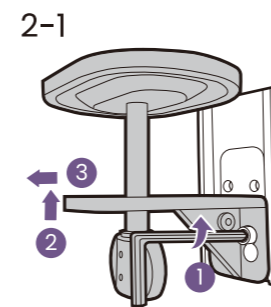
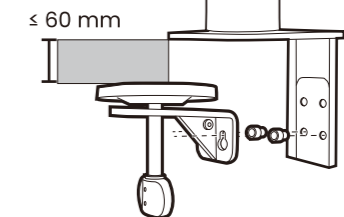
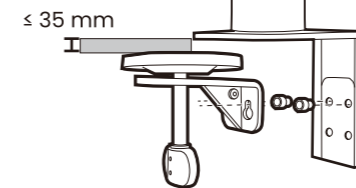


P/N: 4J.XXXXX.XXX

1 Mounting environment check



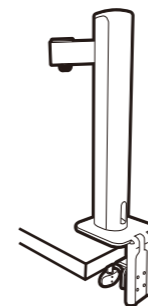
2 Desk thickness check



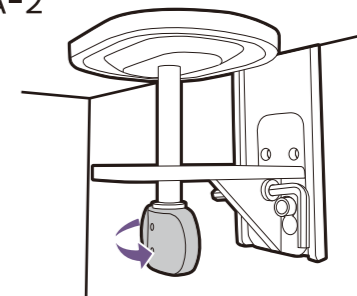
3 Stand installation

A Clamp mounting

3A-1

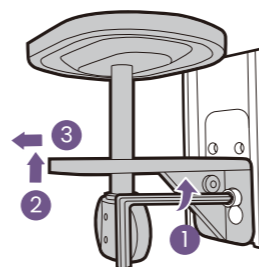


3A-2

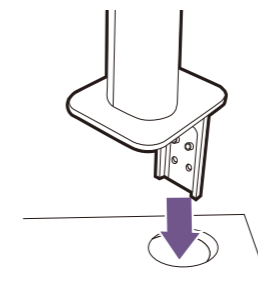


B Grommet mounting

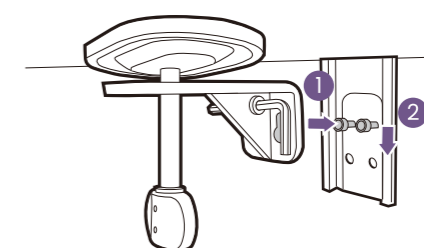
3B-1



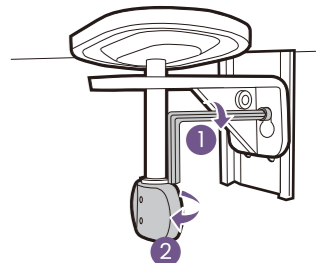
3B-2



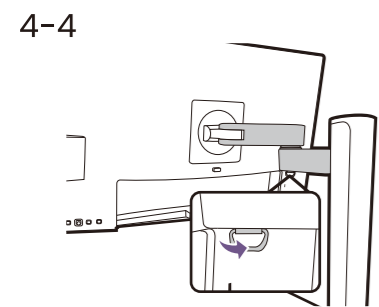
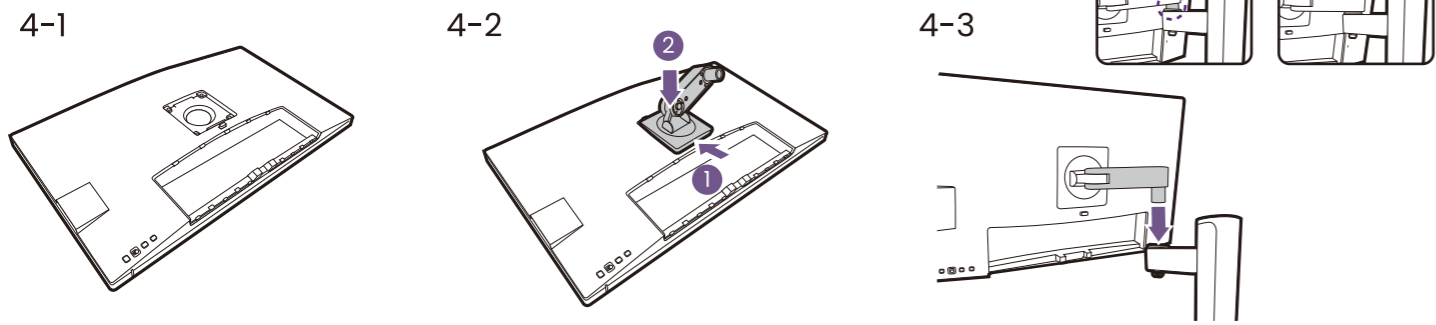
3B-3



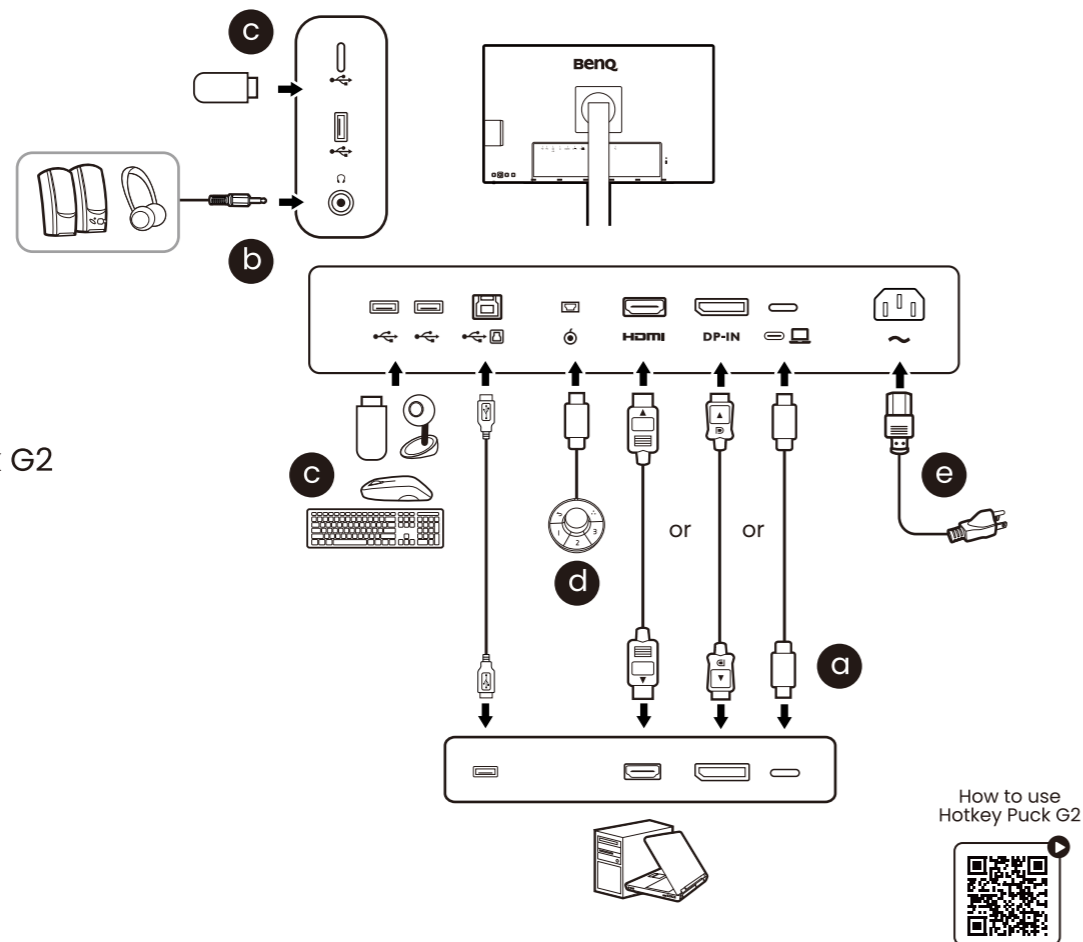
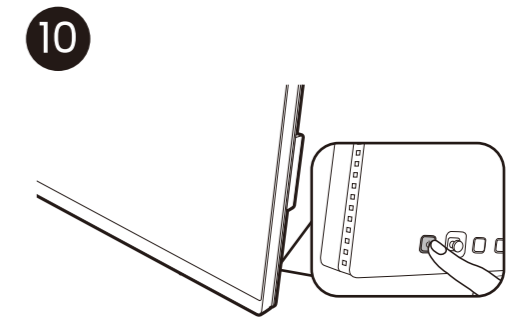
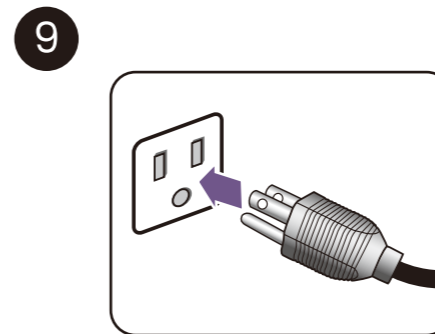
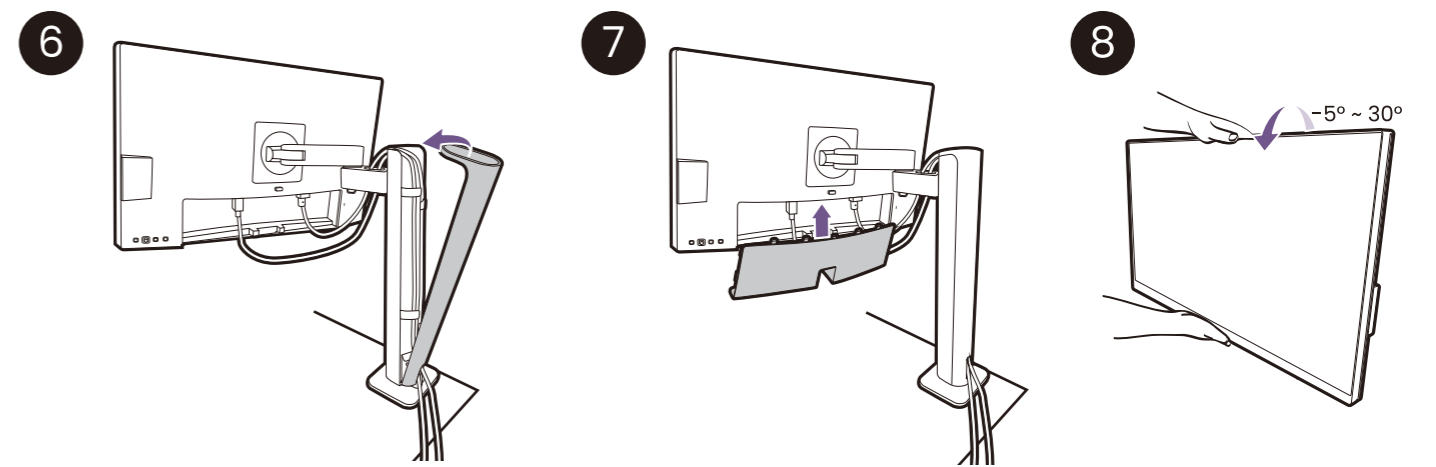
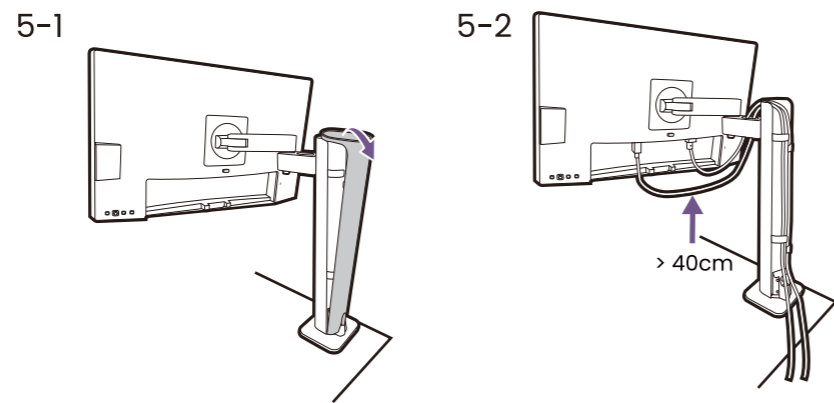
3B-4



4 Mounting the monitor head

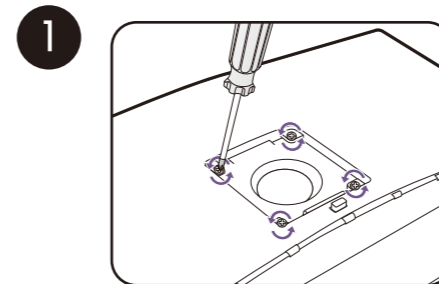
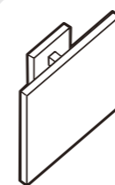


5 Cable connection and management

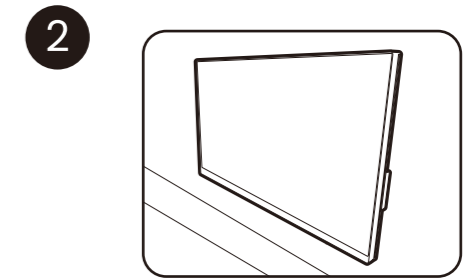


Software installation

Display Pilot 2: for display arrangement & color matching (ICCsinc)



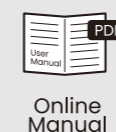
M4 x 10 mm



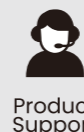
Support.BenQ.com



Warranty Information



Online Manual



Product Support



Software Download

For professional color display



CAD / CAM Mode



Animation Mode

For work efficiency



KVM Switch