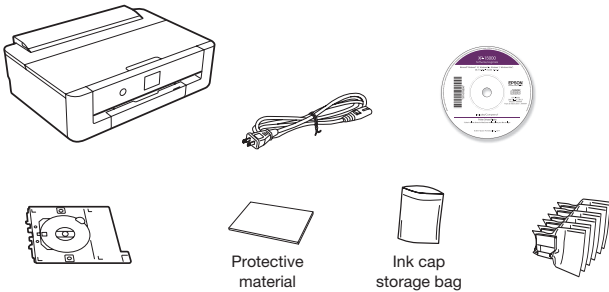


**Read these instructions before using your product.**

**Note for Spanish speakers/Nota para hispanohablantes:**

Para obtener instrucciones de configuración en español, consulte la *Guía de instalación* en [www.epson.com/support/xp15000sp](http://www.epson.com/support/xp15000sp) (requiere una conexión a Internet).

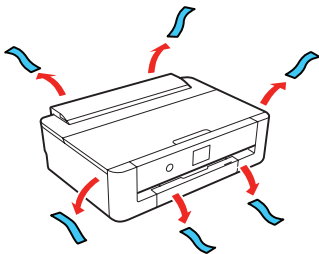
## 1 Unpack



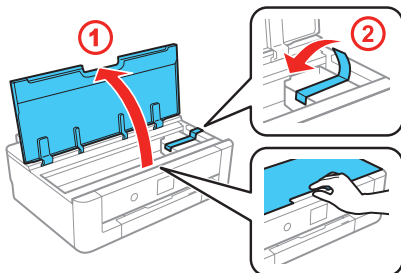
**Note:**

- Do not open ink cartridge packages until you are ready to install the ink. Cartridges are vacuum packed to maintain reliability.
- Do not throw away the protective material shown above. Tape this piece to the top of the ink cartridge holder when transporting your product. For more information, see the online *User's Guide*.
- The CD/DVD tray is stored in the bottom of the paper cassette.

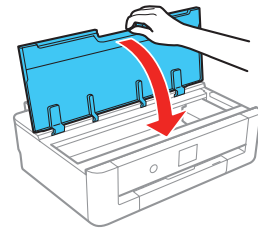
**1** Remove all protective materials from the product.



**2** Open the printer cover and remove all protective materials from inside the product.

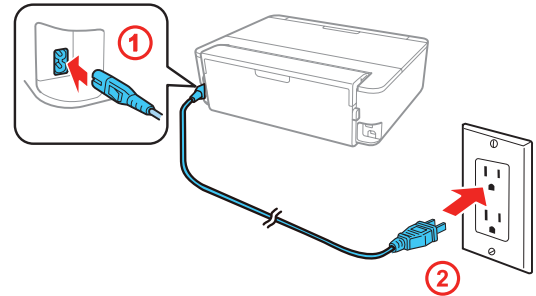


**3** Close the printer cover.



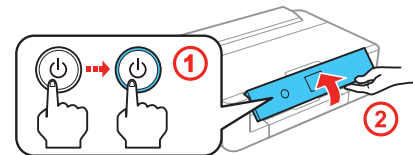
## 2 Turn on and configure

**1** Connect the power cord to the back of the printer and to an electrical outlet.



**Caution:** Do not connect to your computer yet.

**2** Turn on the product, then adjust the control panel.



**3** Select your language.

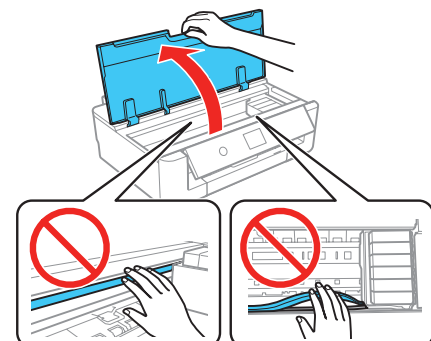
**Note:**

- You can change this setting later using the product's control panel. For more information, see the online *User's Guide*.
- If an error message appears, turn off the product and check that no protective material has been left inside the product.

## 3 Install ink cartridges

**Caution:** Keep ink cartridges out of the reach of children and do not drink the ink.

**1** Open the printer cover.

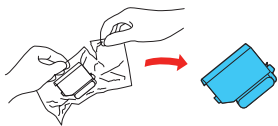


**Caution:** Do not touch the flat, white cable or the print head path.



\*413525100\*

## 2 Unpack the ink cartridges.

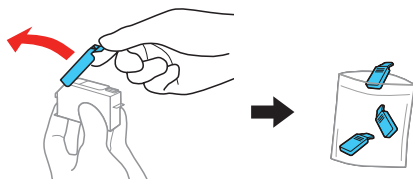


### Caution:

- Do not shake the ink cartridges.
- Do not touch the areas shown below. Doing so may prevent normal operation and printing.

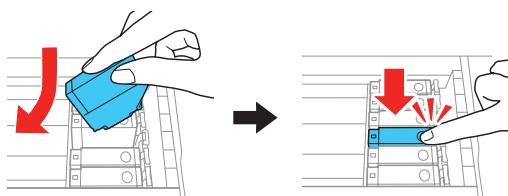


## 3 Remove the cap from each ink cartridge. Store the caps in the included plastic bag.

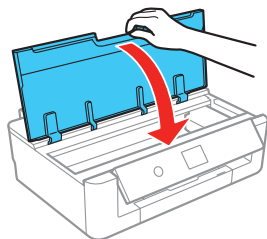


**Note:** Save the caps and use them to recap the ink cartridges after removing them for storage or disposal.

## 4 Insert the cartridges at an angle in the holder for each color. Press each cartridge down until it clicks.



## 5 Close the printer cover.



## 6 The printer starts charging the ink. Ink charging takes approximately 10 minutes. When you see a completion message on the printer's LCD screen, charging is finished.

**Caution:** Don't turn off the printer while it is charging or you'll waste ink.

### Note:

- The printer is designed for use with Epson® cartridges only, not third-party cartridges or ink.
- The cartridges included with the printer are designed for printer set up and not for resale. After some ink is used for charging, the rest is available for printing.

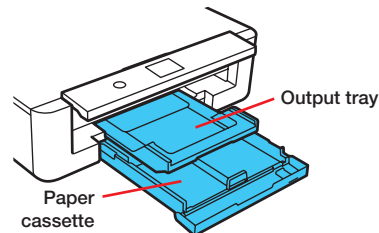
## 7 Follow the on-screen instructions to adjust the print quality of your product.

### Note:

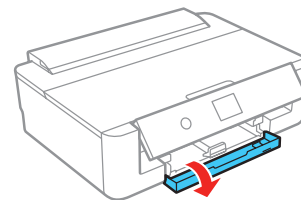
- You need to load paper before you can adjust the print quality. See "Load paper" below for details.
- Select **Adjust Later** if you want to adjust the print quality later. For more information, see the online *User's Guide*.

## 4 Load paper

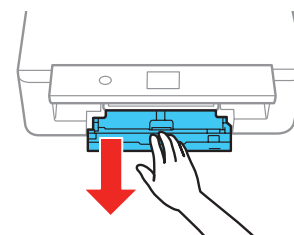
See the online *User's Guide* for information about available paper types and sizes, loading capacity, rear feed loading, and loading CD/DVD/Blu-ray™ discs.



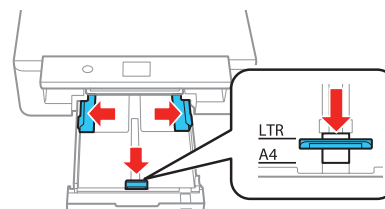
## 1 Lower the front cover until it clicks.



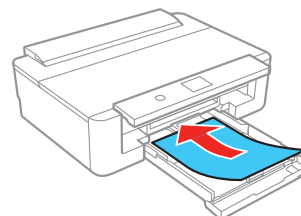
## 2 Pull out the paper cassette.



## 3 Slide the side edge guides outward and set the front edge guide to the paper size you are using.



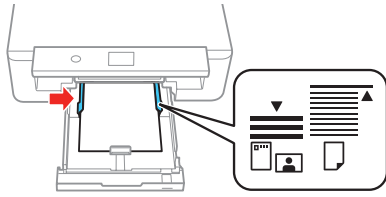
## 4 Insert the paper with the glossy or printable side facedown.



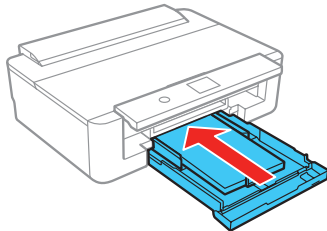
**Note:** Make sure the paper is loaded against the back of the cassette and not sticking out from the front of the cassette.



- 5** Slide the side edge guides against the paper, but not too tight. Make sure the paper is under the arrow mark for your paper type. For more information, see the online *User's Guide*.



- 6** Keep the cassette flat as you insert it all the way, then close the front cover.



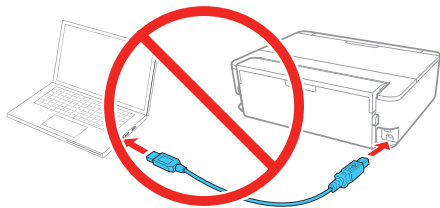
- 7** Select the paper settings on the product's control panel.

## 5 Install software

**Note:** If your computer does not have a CD/DVD drive or you are using a Mac, an Internet connection is required to obtain the product software.

To print from a Chromebook™, go to [www.epson.com/support/gcp](http://www.epson.com/support/gcp) (U.S.) or [www.epson.ca/support/gcp](http://www.epson.ca/support/gcp) (Canada) for instructions.

- 1** Make sure the product is **NOT CONNECTED** to your computer.



**Windows®:** If you see a Found New Hardware screen, click **Cancel** and disconnect the USB cable.

- 2** Insert the product CD or download and run your product's software package. For the latest software, visit [www.epson.com/support/xp15000](http://www.epson.com/support/xp15000) (U.S.) or [www.epson.ca/support/xp15000](http://www.epson.ca/support/xp15000) (Canada).
- 3** Follow the instructions on the screen to run the setup program.

**Mac:** Make sure you install Epson Software Updater to receive firmware and software updates for your product.

- 4** When you see the Select Your Connection screen, select one of the following:

- **Wireless connection**

In most cases, the software installer automatically attempts to set up your wireless connection. If setup is unsuccessful, you may need to enter your network name (SSID) and password.

- **Direct USB connection**

Make sure you have a USB cable (not included).

- **Wired network connection**

Make sure you have an Ethernet cable (not included).

---

## Mobile printing

Connect wirelessly from your smartphone, tablet, or computer. Print documents and photos from across the room or around the world:

- Print directly from your iOS device. Simply connect your printer and device to the same network and tap the action icon to select the print option.
- Use Epson Print Enabler (free from Google Play™) with Android™ devices (v4.4 or later). Then connect your printer and device to the same network and tap the menu icon to select the print option.
- Print remotely with Epson Connect™ and Google Cloud Print™. See your online *User's Guide* for instructions or learn more at [www.epson.com/connect](http://www.epson.com/connect) (U.S.) or [www.epson.ca/connect](http://www.epson.ca/connect) (Canada).

---

## Any problems?

### Network setup was unsuccessful.

- Make sure you select the right network name (SSID).
- Restart your router (turn it off and then on), then try to connect to it again.
- The printer can only connect to a network that supports 2.4 GHz connections. If your router offers both 2.4 GHz and 5 GHz connections, make sure 2.4 GHz is enabled.
- If you see a firewall alert message, click **Unblock** or **Allow** to let setup continue.
- If your network has security enabled, make sure you enter your network password (WEP key or WPA passphrase) correctly. Be sure to enter your password in the correct case.

### There are lines or incorrect colors in my printouts.

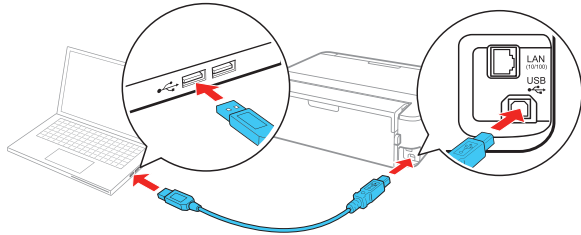
Run a nozzle check to see if there are any gaps in the printout. Then clean the print head, if necessary. See the online *User's Guide* for more information.

### The product's screen is dark.

Make sure your product is turned on, and press any button to wake it from sleep mode.

### Setup is unable to find my product after connecting it with a USB cable.

Make sure the product is turned on and securely connected as shown:



## Any questions?

### User's Guide

**Windows:** Click the icon on your desktop or Apps screen to access the online *User's Guide*.

**Mac:** Click the icon in **Applications/Epson Software/Guide** to access the online *User's Guide*.

If you don't have a User's Guide icon, go to the Epson website, as shown below.

### Technical support

Visit [www.epson.com/support](http://www.epson.com/support) (U.S.) or [www.epson.ca/support](http://www.epson.ca/support) (Canada) and search for your product to download drivers, view manuals, get FAQs, or contact Epson.

Call (562) 276-7282 (U.S.) or (905) 709-2567 (Canada), 6 AM to 8 PM, Pacific Time, Monday through Friday, and 7 AM to 4 PM, Pacific Time, Saturday. Days and hours of support are subject to change without notice. Toll or long distance charges may apply.

### Recycling

Epson offers a recycling program for end of life hardware and ink cartridges. Please go to [www.epson.com/recycle](http://www.epson.com/recycle) (U.S.) or [www.epson.ca/recycle](http://www.epson.ca/recycle) (Canada) for information on how to return your products for proper disposal.

## Need paper and ink?

Ensure peak performance and brilliant results with Genuine Epson Ink and specialty papers, engineered specifically for Epson printers. Find Genuine Epson Ink and specialty papers at [www.epson.com](http://www.epson.com) (U.S. sales) or [www.epson.ca](http://www.epson.ca) (Canadian sales) and at Epson authorized resellers. Call 800-GO-EPSON (800-463-7766).



DESIGNED *for*  
EXCELLENCE™

Epson printers, ink and specialty papers.



### XP-15000 replacement ink cartridges

Color	Standard-capacity	High-capacity
Black	312	312XL
Cyan	312	312XL
Magenta	312	312XL
Yellow	312	312XL
Red	—	314XL
Gray	—	314XL



EPSON and Claria are registered trademarks, Epson Connect is a trademark, and EPSON Exceed Your Vision is a registered logomark of Seiko Epson Corporation. Designed for Excellence is a trademark of Epson America, Inc.

Mac is a trademark of Apple Inc., registered in the U.S. and other countries.

Android, Google Cloud Print, Chromebook, and Google Play are trademarks of Google Inc.

General Notice: Other product names used herein are for identification purposes only and may be trademarks of their respective owners. Epson disclaims any and all rights in those marks.

This information is subject to change without notice.

© 2017 Epson America, Inc., 8/17