



**We love that you are rocking JLab!
We take pride in our products and fully stand behind them.**

JLAB®
GO WORK
HEADSET



YOUR WARRANTY

All warranty claims are subject to JLab authorization and at our sole discretion. Retain your proof of purchase to ensure warranty coverage.



CONTACT US

Reach out to us at support@jlab.com or visit jlab.com/contact

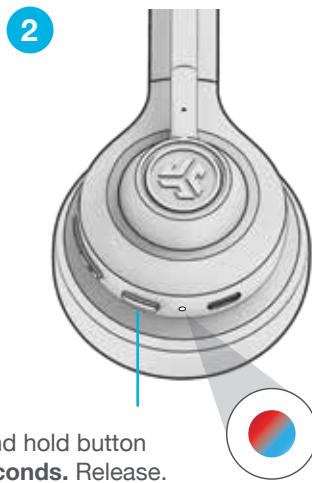
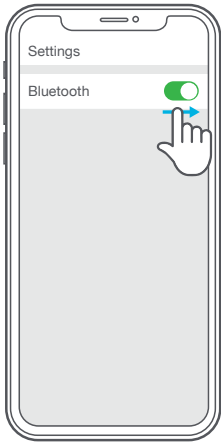
REGISTER TODAY

jlab.com/register

Product updates | How-to tips
FAQs & more

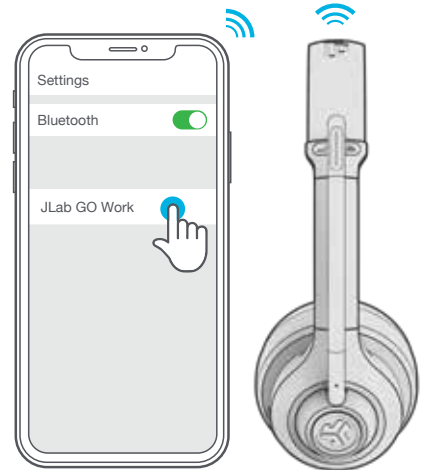
BLUETOOTH PAIRING

- 1 Turn on Bluetooth in your device settings.



Press and hold button for **8 seconds**. Release. Lights will **flash blue/red**.

- 3 Select "JLab GO Work" in your device settings to connect.



MULTIPOINT (CONNECT 2 DEVICES SIMULTANEOUSLY)

- 1 Once **FIRST** device is connected, turn off Bluetooth in device settings. GO Work will auto enter Bluetooth Pairing.



- 2 Enter your **SECOND** device Bluetooth settings and connect to GO Work.



- 3 Enter your **FIRST** device settings. Turn on Bluetooth and reconnect to GO Work.



For more info and troubleshooting on MULTIPOINT visit: JLAB.COM/SUPPORT

BUTTON FUNCTIONS

VOLUME UP: Press once
TRACK FORWARD:
Press and hold 2+ seconds

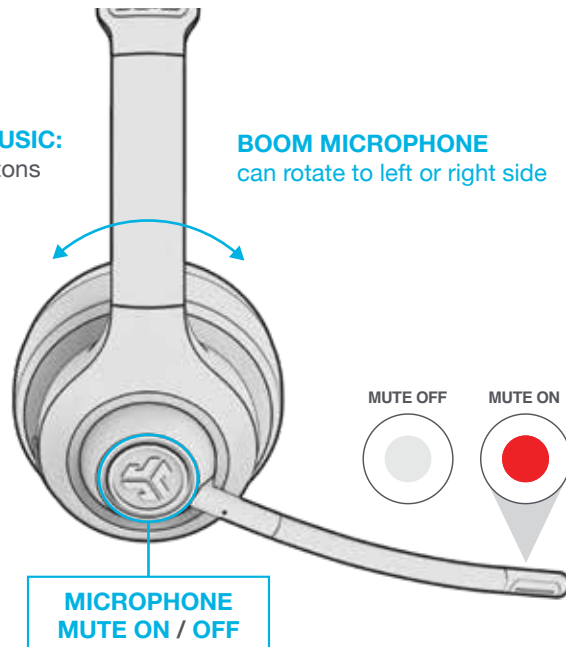
VOLUME DOWN: Press once
TRACK BACKWARD:
Press and hold 2+ seconds

POWER ON/OFF:
Press and hold 2+ seconds
PLAY/PAUSE/ANSWER/HANG UP CALLS:
Press once
REJECT INCOMING CALL:
Press and hold 1+ second
ACTIVATE SIRI (iOS) OR "OK GOOGLE" (ANDROID): Press twice
HEAR YOURSELF ON/OFF:
Triple Press (when on call)
BLUETOOTH PAIRING:
See *Bluetooth Pairing*.



SWITCH EQ VOICE / MUSIC:
Press and hold both buttons simultaneously

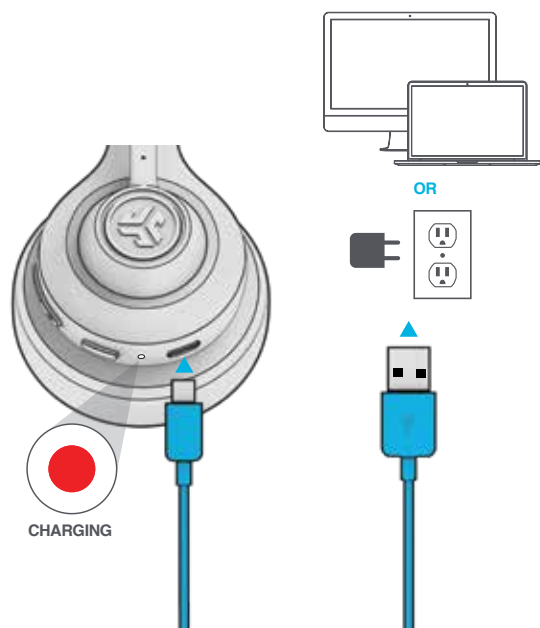
BOOM MICROPHONE
can rotate to left or right side



CHARGING

Connect to computer or USB 5v 1A (or less) output device.

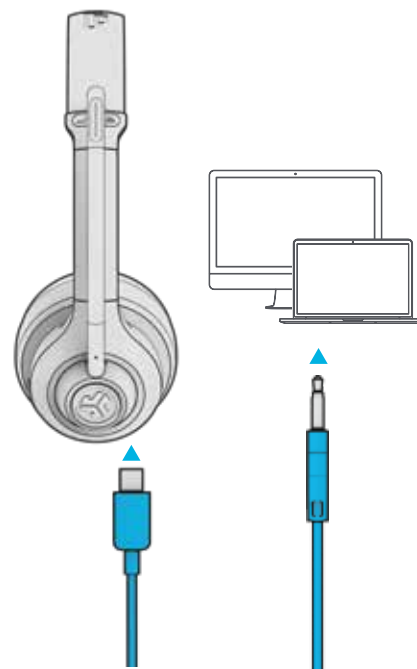
Note:
GO Work can simultaneously charge while Bluetooth is connected.
Power on and connect to device after charging occurs.



AUX INPUT

GO Work can be used as a wired headset with AUX cable.

Note: The headset will still use a limited amount of battery for the microphones to function.



CAUTIONS

- Avoid extreme heat, cold, and humidity.
 - Avoid dropping or crushing the earbuds.
 - Wax may build up in the earbud tips, lowering the sound quality.
Carefully remove the wax with a cotton swab or other small tool to improve the sound quality.
 - If you experience discomfort or pain, try lowering the volume or discontinuing use temporarily.
 - If you experience regular discomfort while using this product, discontinue use and consult your physician.
 - We recommend you treat your earbuds as you would a nice pair of sunglasses and keep them in safe location when not in use.
-



[Shop products](#) | [Product alerts](#) | [Burn-in your headphones](#)

JLab Store + Burn-in Tool

