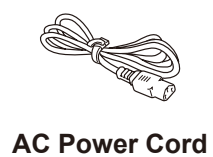
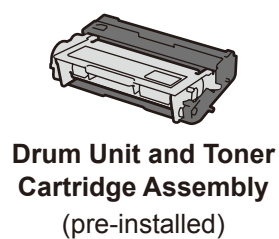
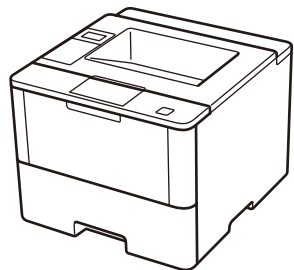




Unpack the machine and check the components



Watch our Video FAQs for help with setting up your Brother machine:
solutions.brother.com/videos.

NOTE:

- Manuals in Spanish for this model are available on the Brother Solutions Center. (USA only): solutions.brother.com/manuals
Los manuales en español de este modelo están disponibles en el Brother Solutions Center. (Solamente en los Estados Unidos): solutions.brother.com/manuals
- The available connection interfaces vary depending on the model.
- You must purchase the correct interface cable for the interface you want to use.

USB cable

We recommend using a USB 2.0 cable (Type A/B) that is no more than 6 feet (2 meters) long.

Network cable

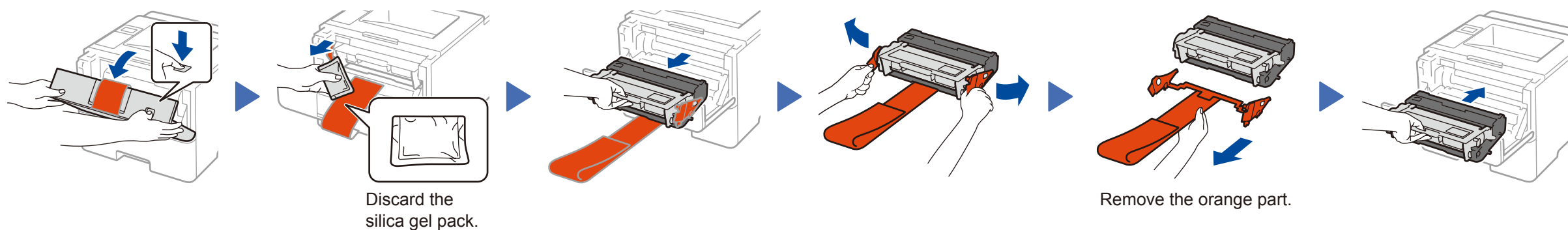
(For HL-L5100DN / HL-L5200DW(T) / HL-L6200DW(T))
Use a straight-through Category 5 (or greater) twisted-pair cable.

Parallel cable

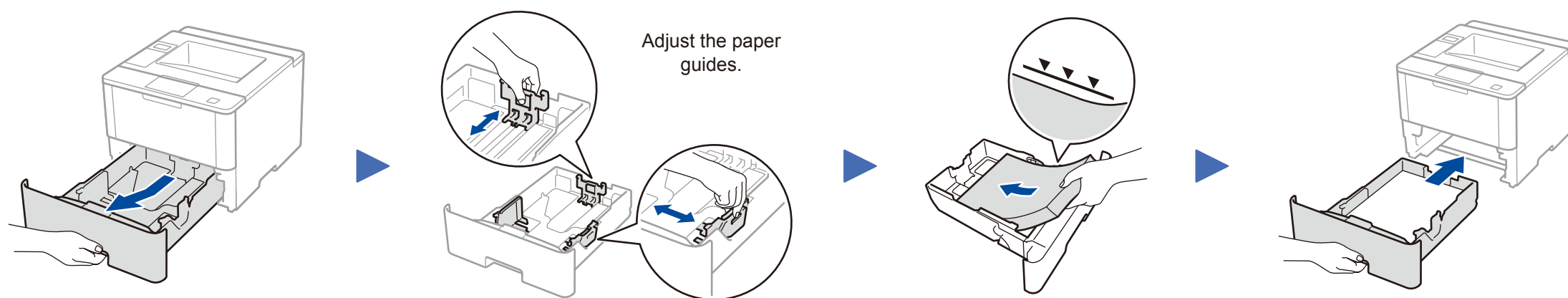
(For HL-L5000D)
Use the parallel cable provided with the machine.

- The illustrations in this Quick Setup Guide show the HL-L6200DW.

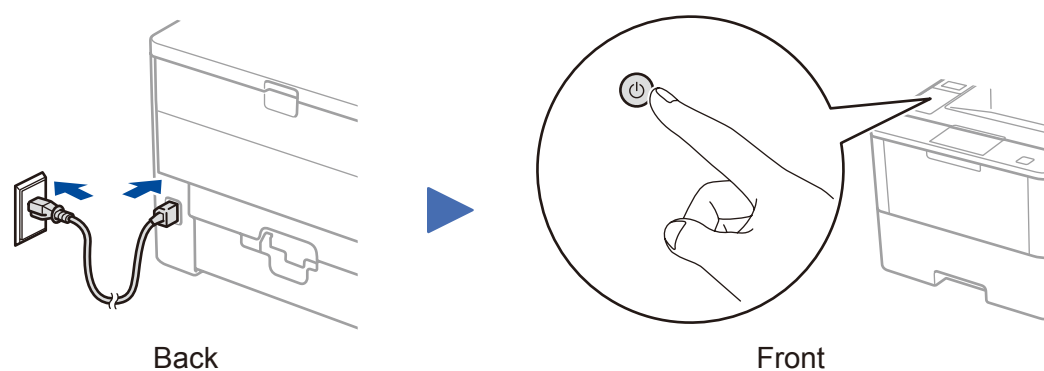
1 Remove the packing materials and install the drum unit and toner cartridge assembly



2 Load paper in the paper tray

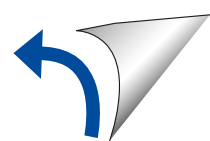


3 Connect the power cord and turn on the machine



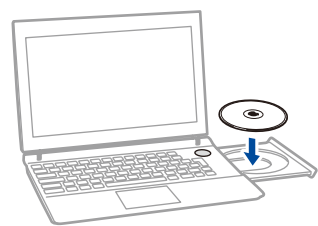
4 Select your language (if needed)

1. Press ▼ or ▲ to select [General Setup], and then press OK.
2. Press OK to select [Local Language].
3. Press ▼ or ▲ to select your language, and then press OK.
4. Press Cancel.



5 Connect your machine and install software

Windows® computer with CD-ROM drive



NOTE:

If the Brother screen does not appear automatically, click **(Start) > Computer (My Computer)**. (For Windows® 8: click the **(File Explorer)** icon on the taskbar, and then go to **Computer (This PC)**.) Double-click the CD-ROM icon, and then double-click **start.exe**.

■ For HL-L5000D

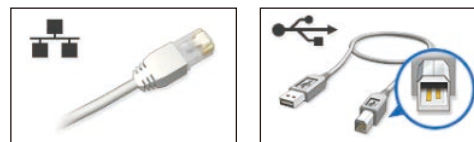


Follow the on-screen instructions to continue installation.

Finish

■ For other models

Choose your Connection Type:



Follow the on-screen instructions to continue installation.

Finish



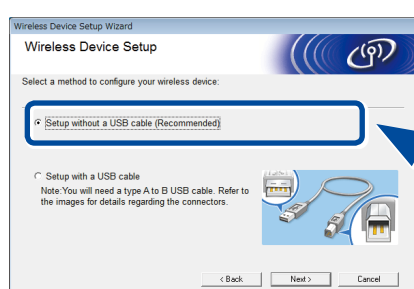
Follow the on-screen instructions to continue installation.

Macintosh/Windows® computer without CD-ROM drive

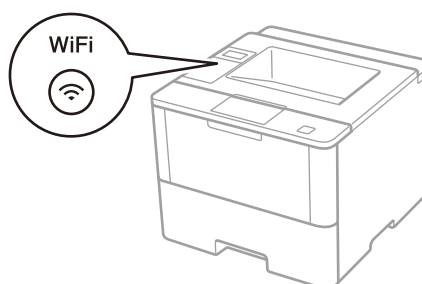


Download the full driver and software package from the Brother Solutions Center.
(Macintosh) solutions.brother.com/mac
(Windows®) solutions.brother.com/windows

If using a wireless network connection:
When the **Wireless Device Setup** screen appears, select **Setup without a USB cable (Recommended)**.



When instructed, go to your machine. Press the **(WiFi)** button.



Follow the on-screen instructions to continue installation.

Finish

NOTE:

- When finished, restart your computer.
- If connection is unsuccessful, see **?** *Cannot set up your machine?* below.

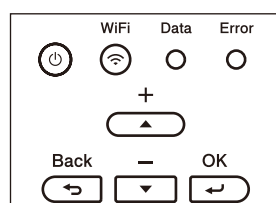
WiFi Alternate wireless configuration method (Setup Wizard)

Restart your wireless access point/router.

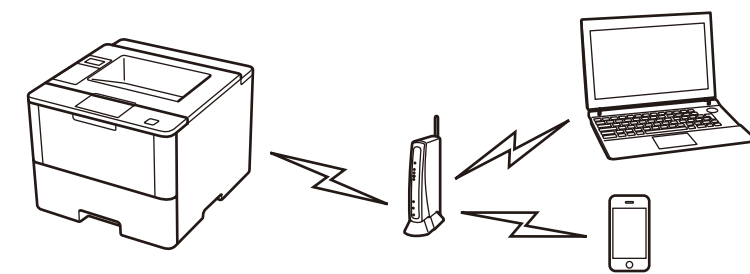


Find your SSID: XXXXXXXX
Network key: XXXX

If you cannot find this information, ask your network administrator or wireless access point/router manufacturer.



- Press **▲** or **▼** to select the [Network] option, and then press **OK**.
- Press **▲** or **▼** to select the [WLAN] option, and then press **OK**.
- Press **▲** or **▼** to select the [Setup Wizard] option, and then press **OK**.
- When [WLAN Enable?] appears, press **▲** to select [On].



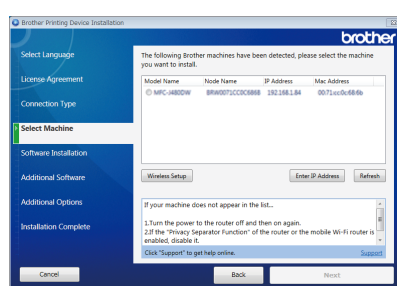
Select the SSID. Enter the Network key.

The LCD displays [Connected].

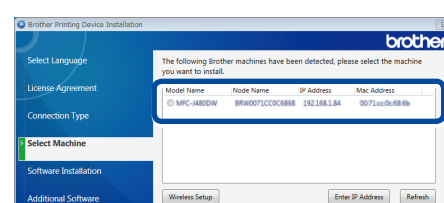
NOTE:

For information on how to enter text, see the printed *Reference Guide*.

To use with your computer, follow Step 5 until the **Select Machine** screen appears, listing all machines in your network.



Select your machine.



Follow the on-screen instructions to continue installation.

Finish

NOTE:

- When finished, restart your computer.
- If connection is unsuccessful, see **?** *Cannot set up your machine?* below.

To use with your mobile device, go to **Print using your mobile device (not available for HL-L5000D)**.

Print using your mobile device (not available for HL-L5000D)

Before printing from your mobile device, your machine must be configured according to step 5 or **WiFi Alternate wireless configuration method (Setup Wizard)**.



Download "Brother iPrint&Scan" to start using your machine with mobile devices.

solutions.brother.com/ips

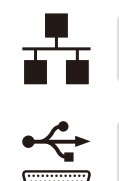


AirPrint is available for OS X and iOS users.

For more information, see the *AirPrint Guide* on your model's **Manuals** web page.

solutions.brother.com/manuals

? Cannot set up your machine?



Wired network

USB/Parallel

Wireless network

Disconnect the cable.

Restart your machine, computer and/or mobile device.



Repeat 5.

Go to **WiFi Alternate wireless configuration method (Setup Wizard)**.

NOTE:

If you repeat these steps and connection is still unsuccessful, please visit the Brother Solutions Center at: <http://support.brother.com>.



Brother support website <http://support.brother.com>