

## Printing Specification

### 1. Specification

### 1.1 Folding / Cover

Models	1. Model Name:	24_27BA850	<div>Front</div> <div>2</div> <div>3</div> <div>Back</div>
	2. Suffix:	AU	
	3. Part No:	MFL72127005	
	4. REV	REV00	
	5. Number of pages	4	
	6. Folded/Unfolded	Unfolded	
SIZE	7. Trim size (W x H)_Unfolded (mm)	210 x 148	
	8. Trim size (W x H)_folded (mm)	-	
	9. Bindery	Saddle stitching	
COVER	10. Color (Cover)	1	
	11. Paper (Cover)	Wood free	
	12. Weight (cover) (g/m <sup>2</sup> )	80	
INNER	13. Color (inner)	1	
	14. Paper (inner)	Wood free	
	15. Weight (inner) (g/m <sup>2</sup> )	80	
	16. Coating	No	
	17. Thomson	No	
	18. Sub-material	No	
	19. Languages		

### 2. Origin Notification

<p>www.lg.com</p> <p>P/No : MFL69707613 (1708-REV03)</p> <p>Printed in Korea ←</p> <p>Copyright © 2017 LG Electronics Inc. All Rights Reserved.</p>		<p><b>[Country Name]</b></p> <p>LGERS/ LGEMX : Mexico</p> <p>LGKRR: Korea</p> <p>LGEMA: Poland</p> <p>LGEND: China</p> <p>Others: Each Country name.</p>	
<p><b>[Restriction of Hazardous Substances]</b></p> <p>Hazardous substances on this product should be satisfied by substance regulation of Level A-I, A-II, SVHC according to LG(52)B-5011 standard.</p> <p>Especially, Part should be followed and controlled the following specification.</p> <p>(1) Hazardous substances test report should be submitted when part certification test and first mass production.</p> <p>(2) Especially, Don't use or contain lead (Pb) and cadmium (Cd) in ink.</p> <p><b>INK REQUIREMENT FOR EU</b></p> <p>(1) THE AMOUNT OF MOAH/MOSH MUST BE LESS THAN 0.1% OF THE WEIGHT OF THE INK USED.</p> <p>* MOAH(MINERAL OIL AROMATIC HYDROCARBONS) : CONSISTING OF 1 TO 7 AROMATIC CYCLES</p> <p>* MOSH(MINERAL OIL SATURATED HYDROCARBONS) : CONSISTING OF 16 TO 35 AROMATIC CYCLES</p> <p>(2) FROM 01 JANUARY 2025 : BAN ON THE USE OF MOAH IN INK UP TO A LIMIT OF ONE PART PER BILLION(1 ppb) FOR COMPOUNDS OF 3 TO 7 AROMATIC CYCLE</p>		<p>Changes the Country name.</p> <p>Printed in <b>[Country Name]</b></p>	

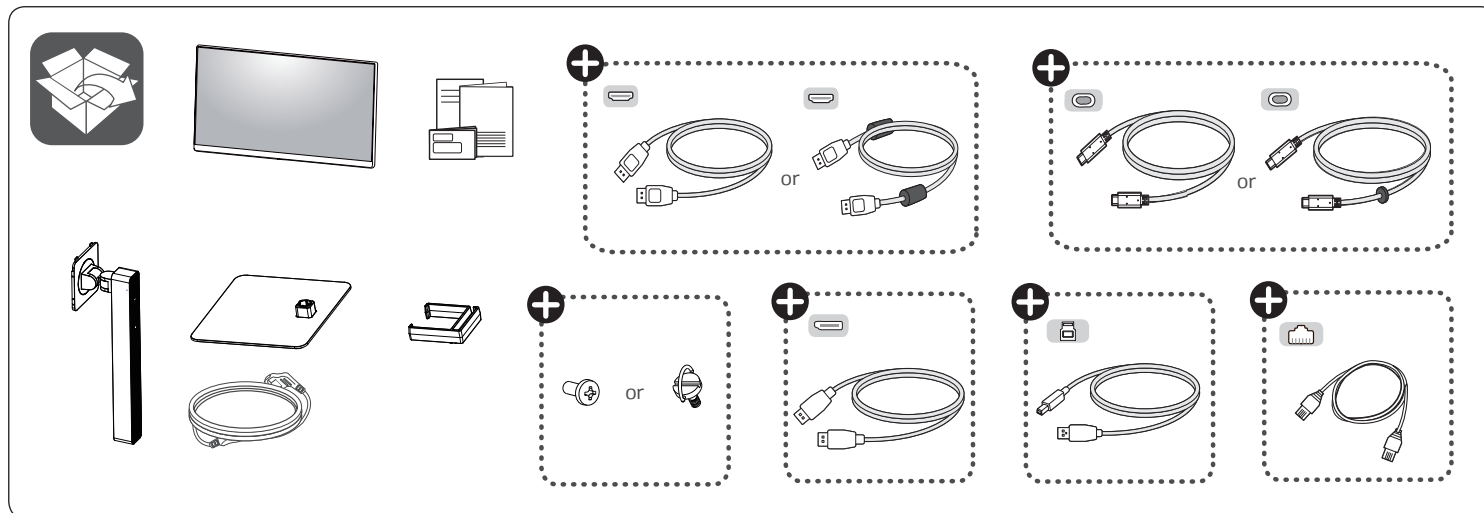
### 3. History

REV07				
REV06				
REV05				
REV04				
REV03				
REV02				
REV01				
REV00	-	-	-	Checked : Yingyu.Fan
				Approved : Ming.Ye
Rev. Number	Date		ECO Number	Owner
				Siwei.Li



## LED LCD COMPUTER MONITOR (LED Computer Monitor)

24BA850 27BA850



**+** Depending on country



It is recommended that use the supplied components.



[www.lg.com](http://www.lg.com)

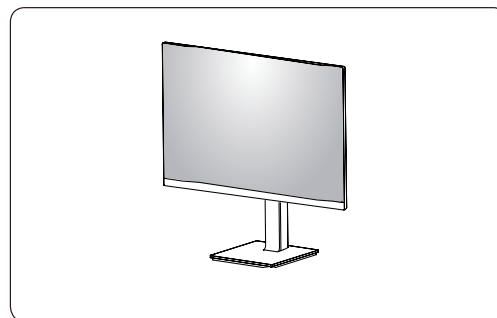
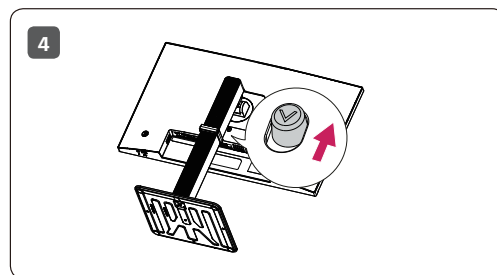
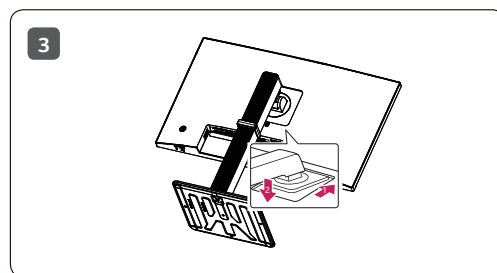
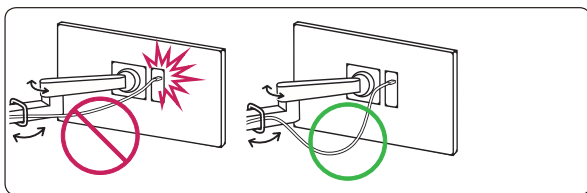
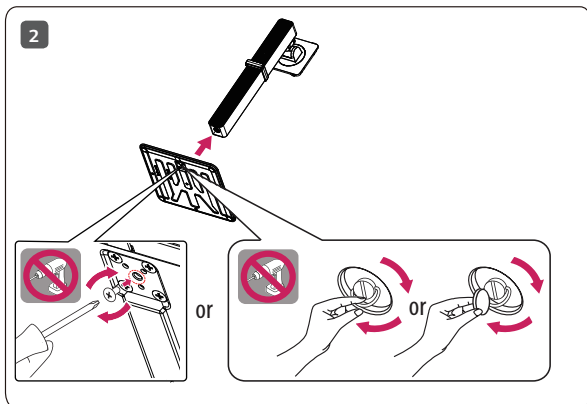
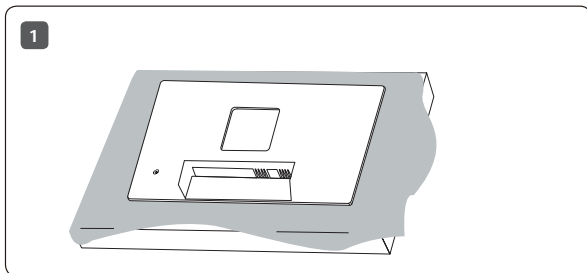


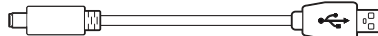
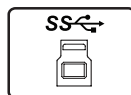
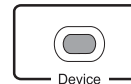
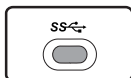
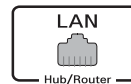
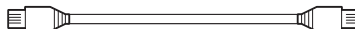
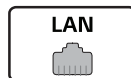
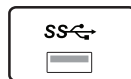
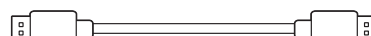
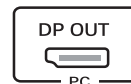
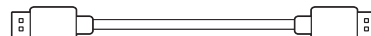
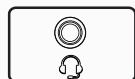
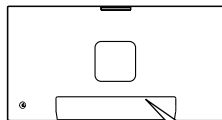
You can download manuals from the LGE website.  
OWNER'S MANUAL AND REGULATORY INFO. are available at <https://www.lg.com/au/support/manuals>.  
PLEASE READ SAFETY INFORMATION BEFORE INSTALLATION AND USE. SCAN QR CODE TO ACCESS.



\* M F L 7 2 1 2 7 0 0 5 \*

(2409-REV00)







- Using a DVI to HDMI / DP (DisplayPort) to HDMI cable may cause compatibility issues.
- The USB port on the product functions as a USB hub.
- Make sure to use the supplied cable. Otherwise, this may cause the device to malfunction.

