



## Quick Installation Guide

# LCD Touchmonitor and Touch Driver

[www.elotouch.com](http://www.elotouch.com)

Revision D  
P/N E744255

### Elo Touch Solutions Technical Support

Online self-help: [www.elotouch.com/go/websupport](http://www.elotouch.com/go/websupport)

#### North America

Elo Touch Solutions  
301 Constitution Drive  
Menlo Park, CA 94025  
[www.elotouch.com](http://www.elotouch.com)

#### Europe

Tel +32 (0)16 35 21 00  
Fax +32 (0)16 35 21 01  
[elosales@elotouch.com](mailto:elosales@elotouch.com)

### Technical Support contacts in your region:

[www.elotouch.com/go/contactsupport](http://www.elotouch.com/go/contactsupport)

#### Asia-Pacific

Tel +81 (45) 478-2161  
Fax +81 (45) 478-2180  
[www.tps.co.jp](http://www.tps.co.jp)

#### Latin America

Tel 1-305-428-5210  
Fax 1-305-717-4909  
[www.elotouch.com.ar](http://www.elotouch.com.ar)

The information in this document is subject to change without notice. Elo Touch Solutions, Inc. and its Affiliates (collectively "Elo") makes no representations or warranties with respect to the contents herein, and specifically disclaims any implied warranties of merchantability or fitness for a particular purpose. Elo reserves the right to revise this publication and to make changes from time to time in the content hereof without obligation of Elo to notify any person of such revisions or changes.

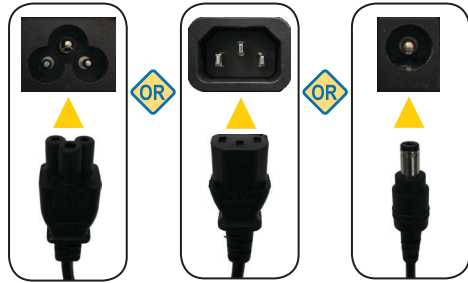
No part of this publication may be reproduced, transmitted, transcribed, stored in a retrieval system, or translated into any language or computer language, in any form or by any means, including, but not limited to, electronic, magnetic, optical, chemical, manual, or otherwise without prior written permission of Elo Touch Solutions, Inc.

Elo (logo) and Elo Touch Solutions are trademarks of Elo and its Affiliates. Windows is a trademark of Microsoft Corporation.

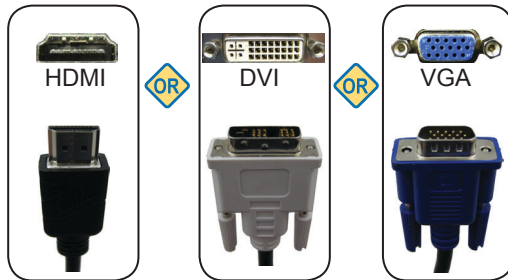
Copyright © 2012 Elo Touch Solutions, Inc. All Rights Reserved.



### 1 Power



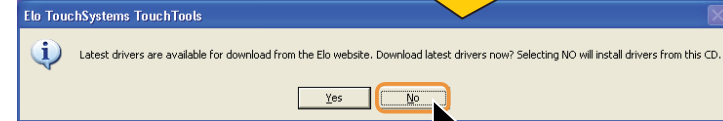
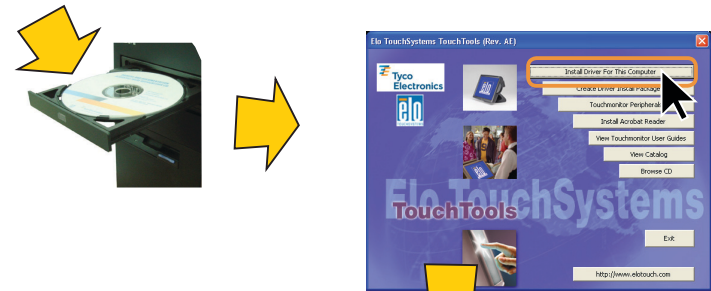
### 2 Video



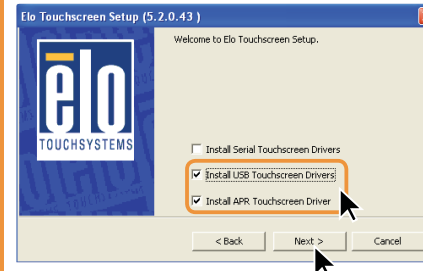
### 3 Touch



### 4 Install Driver



#### Windows XP



#### Windows 7

